

ELECTRONIC COPY

LABORATORY GROWN DIAMOND REPORT

March 4, 2023	
IGI Report Number	LG572326178
Description	LABORATORY GROWN DIAMOND
Shape and Cutting Style	ROUND BRILLIANT
Measurements	7.85 - 7.91 X 4.81 MM

GRADING RESULTS

Carat Weight	1.85 CARAT
Color Grade	F
Clarity Grade	VS 2
Cut Grade	IDEAL

ADDITIONAL GRADING INFORMATION

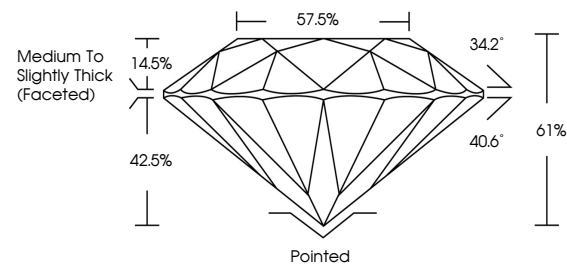
Polish	EXCELLENT
Symmetry	EXCELLENT
Fluorescence	NONE
Inscription(s)	 LG572326178

Comments: This Laboratory Grown Diamond was created by Chemical Vapor Deposition (CVD) growth process and may include post-growth treatment.
Type IIa

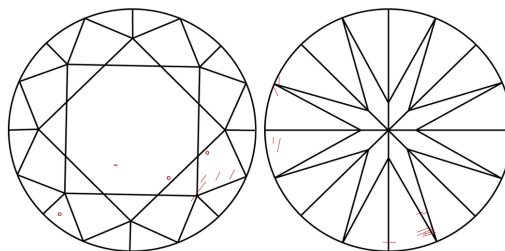
LABORATORY GROWN DIAMOND REPORT

LG572326178
Report verification at igi.org

PROPORTIONS



CLARITY CHARACTERISTICS



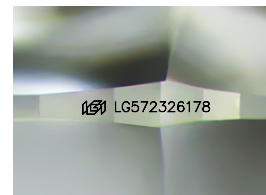
KEY TO SYMBOLS

Red symbols indicate internal characteristics.
Green symbols indicate external characteristics.

LABORATORY GROWN
DIAMOND REPORT

GRADING SCALES

CLARITY									
IF		VVS ¹⁻²			VS ¹⁻²		SI ¹⁻²		I ¹⁻³
Internally Flawless		Very Very Slightly Included			Very Slightly Included		Slightly Included		Included
COLOR									
D	E	F	G	H	I	J	Faint	Very Light	Light



Sample Image Used



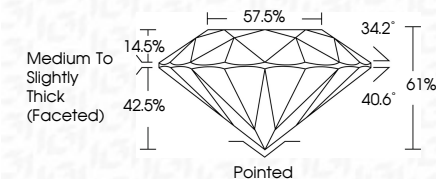
© IGI 2020, International Gemological Institute

FD - 10 20

LABORATORY GROWN DIAMOND REPORT

March 4, 2023	
IGI Report Number	LG572326178
Description	LABORATORY GROWN DIAMOND
Shape and Cutting Style	ROUND BRILLIANT
Measurements	7.85 - 7.91 X 4.81 MM

GRADING RESULTS	
Carat Weight	1.85 CARAT
Color Grade	F
Clarity Grade	VS 2
Cut Grade	IDEAL



ADDITIONAL GRADING INFORMATION

Polish	EXCELLENT
Symmetry	EXCELLENT
Fluorescence	NONE
Inscription(s)	163 LG572326178
<p>Comments: This Laboratory Grown Diamond was created by Chemical Vapor Deposition (CVD) growth process and may include post-growth treatment.</p> <p>Type IIa</p>	



March 4, 2023	Carat Weight	1.86 CARAT
GI Report No. G572326178	Color Grade	F
ROUND BRILLIANT	Clarity Grade	VS 2
	Cut Grade	IDEAL
	Depth	61%
	Table	57.5%
	Grille	Medium to Slightly Thick (faceted)
	Culet	Pointed
	Polish	EXCELLENT
	Symmetry	EXCELLENT
	Fluorescence	NONE
	Inscriptions(s)	4691 G572326178

Comments:

The Laboratory Grown Diamond was created by Chemical Vapor Deposition (CVD) and may include post-growth treatment.

Type IIA

Comments:
This Laboratory Grown Diamond was created by Chemical Vapor Deposition (CVD) growth process and may include post-growth treatment.