



ELECTRONIC COPY

LABORATORY GROWN DIAMOND REPORT

| | |
|-------------------------|-----------------------------|
| May 11, 2023 | |
| IGI Report Number | LG581343051 |
| Description | LABORATORY GROWN DIAMOND |
| Shape and Cutting Style | ROUND BRILLIANT |
| Measurements | 7.36 - 7.40 X 4.38 MM |

GRADING RESULTS

| | |
|---------------|------------|
| Carat Weight | 1.46 CARAT |
| Color Grade | F |
| Clarity Grade | VVS 2 |
| Cut Grade | IDEAL |

ADDITIONAL GRADING INFORMATION

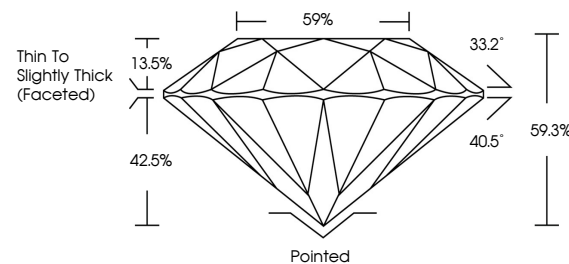
| | |
|----------------|---|
| Polish | EXCELLENT |
| Symmetry | EXCELLENT |
| Fluorescence | NONE |
| Inscription(s) |  LG581343051 |

Comments: This Laboratory Grown Diamond was created by Chemical Vapor Deposition (CVD) growth process and may include post-growth treatment.
Type IIa

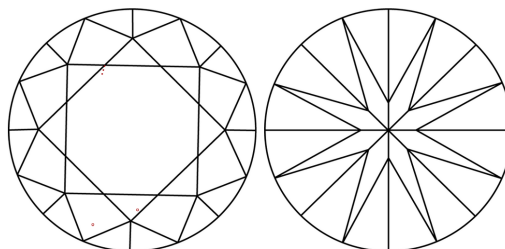
LABORATORY GROWN DIAMOND REPORT

LG581343051
Report verification at igi.org

PROPORTIONS



CLARITY CHARACTERISTICS



KEY TO SYMBOLS

Red symbols indicate internal characteristics.
Green symbols indicate external characteristics.

LABORATORY GROWN
DIAMOND REPORT

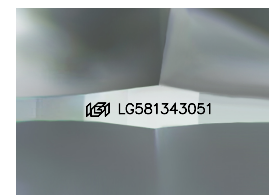
GRADING SCALES

CLARITY

| IF | VVS ¹⁻² | VS ¹⁻² | SI ¹⁻² | I ¹⁻³ |
|---------------------|-----------------------------|------------------------|-------------------|------------------|
| Internally Flawless | Very Very Slightly Included | Very Slightly Included | Slightly Included | Included |

COLOR

D E F G H I J Faint Very Light Light



Sample Image Used



© IGI 2020, International Gemological Institute

FD - 10 20

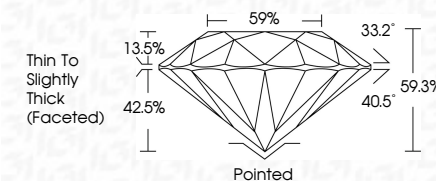
www.igi.org

LABORATORY GROWN DIAMOND REPORT

| | |
|-------------------------|-----------------------------|
| May 11, 2023 | |
| IGI Report Number | LG581343051 |
| Description | LABORATORY GROWN DIAMOND |
| Shape and Cutting Style | ROUND BRILLIANT |
| Measurements | 7.36 - 7.40 X 4.38 MM |

GRADING RESULTS

| | |
|---------------|------------|
| Carat Weight | 1.46 CARAT |
| Color Grade | F |
| Clarity Grade | VVS 2 |
| Cut Grade | IDEAL |



ADDITIONAL GRADING INFORMATION

| | |
|----------------|-----------------|
| Polish | EXCELLENT |
| Symmetry | EXCELLENT |
| Fluorescence | NONE |
| Inscription(s) | 151 LG581343051 |

Comments: This Laboratory Grown Diamond was created by Chemical Vapor Deposition (CVD) growth process and may include post-growth treatment.
Type IIa



| | | | | | | | | | | | | | |
|--------------|--------------------------|-----------------|----------------|--------------|-------------|---------------|----------------------------------|---------|-----------|-----------|--------------|-----------------|---|
| May 11, 2023 | GI Report No. G581340051 | ROUND BRILLIANT | 1.46 CARAT | VVS 2 | IDEAL | 59.3% | Thin To Slightly Thick (Faceted) | Pointed | EXCELLENT | EXCELLENT | NONE | IGI LG581340051 | Comments: The Laboratory Grown Diamond was examined and found to be a CVD growth process and may include post-growth treatment. |
| | | | 7.40 X 4.38 MM | Color Weight | Color Grade | Clarity Grade | Cut Grade | Depth | Girdle | Table | Fluorescence | Fluorescence(s) | |
| | | | | Corat Weight | Color Grade | Clarity Grade | Cut Grade | Depth | Girdle | Table | Fluorescence | Fluorescence(s) | type Ila |