



ELECTRONIC COPY

LABORATORY GROWN DIAMOND REPORT

June 5, 2023	
IGI Report Number	LG584389414
Description	LABORATORY GROWN DIAMOND
Shape and Cutting Style	ROUND BRILLIANT
Measurements	9.59 - 9.65 X 6.05 MM

GRADING RESULTS

Carat Weight	3.50 CARATS
Color Grade	E
Clarity Grade	INTERNALLY FLAWLESS
Cut Grade	EXCELLENT

ADDITIONAL GRADING INFORMATION

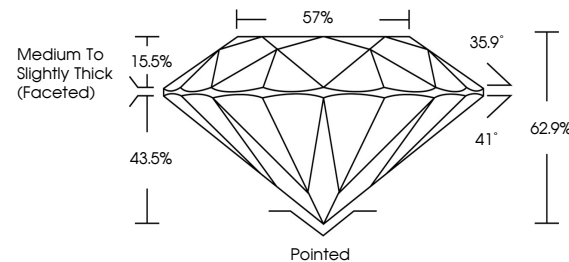
Polish	EXCELLENT
Symmetry	EXCELLENT
Fluorescence	NONE
Inscription(s)	15 LG584389414

Comments: As Grown - No indication of post-growth treatment.
This Laboratory Grown Diamond was created by High Pressure High Temperature (HPHT) growth process.
Type II

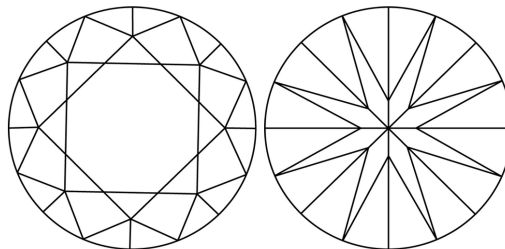
LABORATORY GROWN DIAMOND REPORT

LG584389414
Report verification at igi.org

PROPORTIONS



CLARITY CHARACTERISTICS



KEY TO SYMBOLS

Red symbols indicate internal characteristics.
Green symbols indicate external characteristics.

LABORATORY GROWN
DIAMOND REPORT

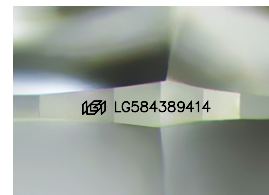
GRADING SCALES

CLARITY

IF	VVS ¹⁻²	VS ¹⁻²	SI ¹⁻²	I ¹⁻³
Internally Flawless	Very Very Slightly Included	Very Slightly Included	Slightly Included	Included

COLOR

D E F G H I J Faint Very Light Light



Sample Image Used

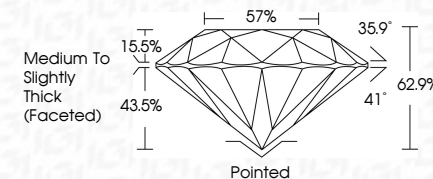


© IGI 2020, International Gemological Institute

FD - 10 20

LABORATORY GROWN DIAMOND REPORT

June 5, 2023	
IGI Report Number	LG584389414
Description	LABORATORY GROWN DIAMOND
Shape and Cutting Style	ROUND BRILLIANT
Measurements	9.59 - 9.65 X 6.05 MM
GRADING RESULTS	
Carat Weight	3.50 CARATS
Color Grade	E
Clarity Grade	INTERNALLY FLAWLESS
Cut Grade	EXCELLENT



ADDITIONAL GRADING INFORMATION

Polish	EXCELLENT
Symmetry	EXCELLENT
Fluorescence	NONE
Inscription(s)	(G) LG584389414
Comments: As Grown - No indication of post-growth treatment.	
This Laboratory Grown Diamond was created by High Pressure High Temperature (HPHT) growth process.	
Type II	



<div> <div>June 5, 2023</div> <div>IGI Report No. IGS64389414</div> </div>		<div> <div>ROUND BRILLIANT</div> <div>6.99 - 9.65 X 6.05 MM</div> </div>		<div> <div>3.50 CARATS</div> <div>E</div> </div>		<div> <div>IF</div> <div>EXCELLENT</div> </div>		<div> <div>62%</div> <div>57%</div> </div>		<div> <div>Medium to Slightly Thick (faceted)</div> <div>Ported</div> </div>		<div> <div>EXCELLENT</div> <div>EXCELLENT</div> </div>		<div> <div>NONE</div> <div>IGI IGS64389414</div> </div>		<div> <div>Comments:</div> <div>No indication of post-growth treatment.</div> </div>		<div> <div>The Laboratory Grown Diamond was created by High Pressure High Temperature (HPHT) growth process.</div> <div>Type II</div> </div>	
--	--	--	--	--	--	---	--	--	--	--	--	--	--	---	--	--	--	--	--