



**ELECTRONIC COPY**

## LABORATORY GROWN DIAMOND REPORT

August 10, 2023	
IGI Report Number	LG593390216
Description	LABORATORY GROWN DIAMOND
Shape and Cutting Style	ROUND BRILLIANT
Measurements	7.53 - 7.57 X 4.59 MM

## GRADING RESULTS

Carat Weight	1.60 CARAT
Color Grade	D
Clarity Grade	VVS 2
Cut Grade	IDEAL

### ADDITIONAL GRADING INFORMATION

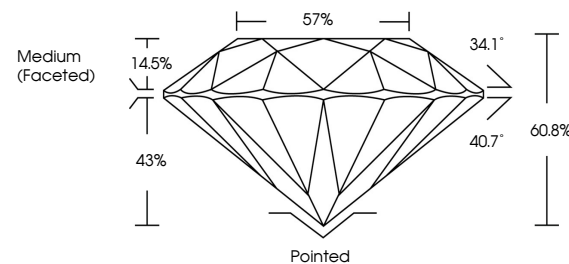
Polish	EXCELLENT
Symmetry	EXCELLENT
Fluorescence	NONE
Inscription(s)	LG593390216

Comments: HEARTS & ARROWS  
As Grown - No indication of post-growth treatment.  
This Laboratory Grown Diamond was created by High  
Pressure High Temperature (HPHT) growth process.  
Type II

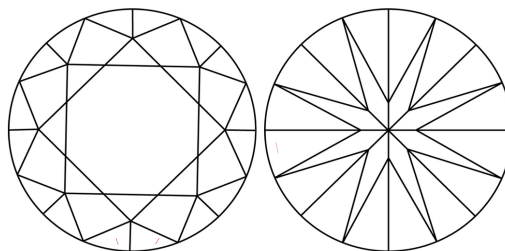
## LABORATORY GROWN DIAMOND REPORT

LG593390216  
Report verification at [igi.org](https://igi.org)

## PROPORTIONS



## CLARITY CHARACTERISTICS



### KEY TO SYMBOLS

Red symbols indicate internal characteristics.  
Green symbols indicate external characteristics.



**www.igi.org**

LABORATORY GROWN  
DIAMOND REPORT

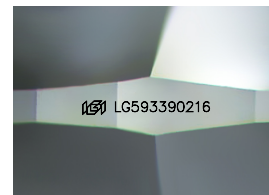
## GRADING SCALES

## CLARITY

IF	VVS <sup>1-2</sup>	VS <sup>1-2</sup>	SI <sup>1-2</sup>	I <sup>1-3</sup>
Internally Flawless	Very Very Slightly Included	Very Slightly Included	Slightly Included	Included

**COLOR**

D E F G H I J Faint Very Light Light



Sample Image Used



© IGI 2020, International Gemological Institute

FD - 10 20



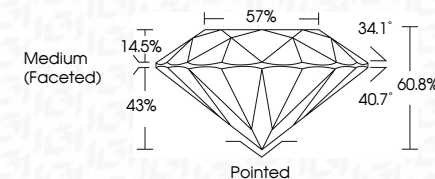
THIS DOCUMENT WAS PRODUCED WITH THE FOLLOWING SECURITY MEASURES: SPECIAL DOCUMENT PAPER, INK SCREENS, WATERMARK, BACKGROUND DESIGNS, HOLOGRAM AND OTHER SECURITY FEATURES NOT LISTED AND DO EXCEED DOCUMENT SECURITY INDUSTRY GUIDELINES

## LABORATORY GROWN DIAMOND REPORT

August 10, 2023	
IGI Report Number	LG593390216
Description	LABORATORY GROWN DIAMOND
Shape and Cutting Style	ROUND BRILLIANT
Measurements	7.53 - 7.57 X 4.59 MM

## GRADING RESULTS

Carat Weight	1.60 CARAT
Color Grade	D
Clarity Grade	VVS 2
Cut Grade	IDEAL



### ADDITIONAL GRADING INFORMATION

Polish	EXCELLENT
Symmetry	EXCELLENT
Fluorescence	NONE
Inscription(s)	151 LG593390216

Comments: HEARTS & ARROWS  
As Grown - No indication of post-growth treatment.  
This Laboratory Grown Diamond was created by High  
Pressure High Temperature (HPHT) growth process.  
Type II



August 10, 2023  
GI Report No LG593390216  
ROUND BRILLIANT

7.58 - 7.57 X 4.59 MM	1.60 CARAT	D
Carat Weight	VVS 2	IDEAL
Color Grade	60.6%	57%
Clarity Grade	Medium (Faceted)	
Depth		
Girdle		
Culet		
Polish		
Symmetry		
Fluorescence		

**Comments:**  
**HEARTS & ARROWS**  
As Grown - No indication of post-growth treatment.  
This Laboratory Grown Diamond was created by High Pressure High temperature (HPHT) growth process.