



ELECTRONIC COPY

LABORATORY GROWN DIAMOND REPORT

September 20, 2023	
IGI Report Number	LG600366761
Description	LABORATORY GROWN DIAMOND
Shape and Cutting Style	ROUND BRILLIANT
Measurements	7.21 - 7.23 X 4.35 MM

GRADING RESULTS

Carat Weight	1.39 CARAT
Color Grade	E
Clarity Grade	VS 1
Cut Grade	IDEAL

ADDITIONAL GRADING INFORMATION

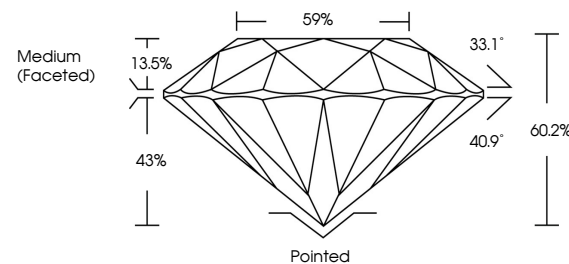
Polish	EXCELLENT
Symmetry	EXCELLENT
Fluorescence	NONE
Inscription(s)	 LG600366761

Comments: This Laboratory Grown Diamond was created by Chemical Vapor Deposition (CVD) growth process and may include post-growth treatment.
Type IIa

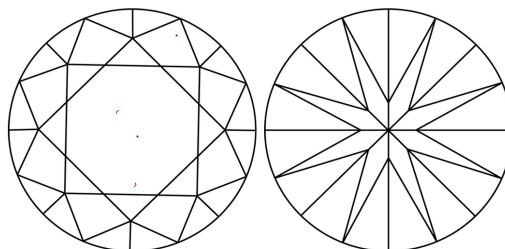
LABORATORY GROWN DIAMOND REPORT

LG600366761
Report verification at igi.org

PROPORTIONS



CLARITY CHARACTERISTICS



KEY TO SYMBOLS

Red symbols indicate internal characteristics.
Green symbols indicate external characteristics.

LABORATORY GROWN
DIAMOND REPORT

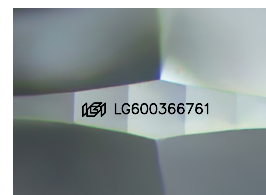
GRADING SCALES

CLARITY

IF	VVS ¹⁻²	VS ¹⁻²	SI ¹⁻²	I ¹⁻³
Internally Flawless	Very Very Slightly Included	Very Slightly Included	Slightly Included	Included

COLOR

D E F G H I J Faint Very Light Light



Sample Image Used



© IGI 2020, International Gemological Institute

FD - 10 20

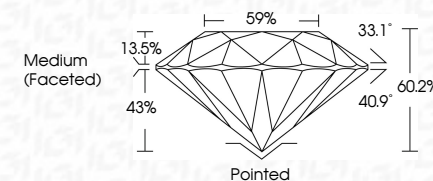
www.igi.org

LABORATORY GROWN DIAMOND REPORT

September 20, 2023	
IGI Report Number	LG600366761
Description	LABORATORY GROWN DIAMOND
Shape and Cutting Style	ROUND BRILLIANT
Measurements	7.21 - 7.23 X 4.35 MM

GRADING RESULTS

Carat Weight	1.39 CARAT
Color Grade	E
Clarity Grade	VS 1
Cut Grade	IDEAL



ADDITIONAL GRADING INFORMATION

Polish	EXCELLENT
Symmetry	EXCELLENT
Fluorescence	NONE
Inscription(s)	18 LG 600366761

Comments: This Laboratory Grown Diamond was created by Chemical Vapor Deposition (CVD) growth process and may include post-growth treatment.
Type IIa



September 20, 2023
 IGI Report No LG600366761
 ROUND BRILLIANT

1.39 CARAT	
E	
VS 1	
IDEAL	
60.2%	
59%	
Medium (Excellent)	

	Pointed	EXCELLENT	EXCELLENT	NONE
Culet				
Polish				
Symmetry				
Fluorescence				

Comments:
This Laboratory Grown Diamond was created by Chemical Vapor Deposition (CVD) growth process and may include post-growth treatment.