



**ELECTRONIC COPY**

## LABORATORY GROWN DIAMOND REPORT

November 7, 2023	
IGI Report Number	LG602348370
Description	LABORATORY GROWN DIAMOND
Shape and Cutting Style	SQUARE PRINCESS
Measurements	9.51 X 9.42 X 6.33 MM

## GRADING RESULTS

Carat Weight	5.01 CARATS
Color Grade	E
Clarity Grade	VS 1
Cut Grade	EXCELLENT

### ADDITIONAL GRADING INFORMATION

Polish	EXCELLENT
Symmetry	EXCELLENT
Fluorescence	NONE
Inscription(s)	 LG602348370

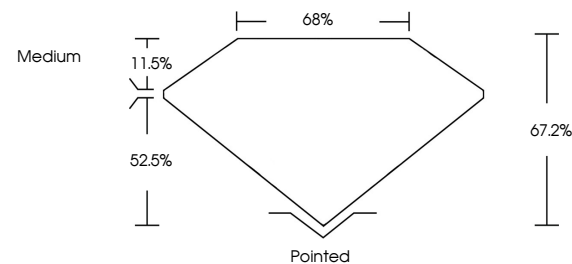
Comments: This Laboratory Grown Diamond was created by Chemical Vapor Deposition (CVD) growth process and may include post-growth treatment.

## LABORATORY GROWN DIAMOND REPORT

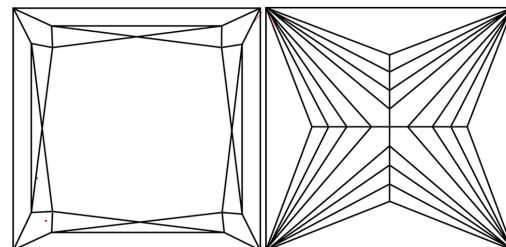
LG602348370

Report verification at [igi.org](http://igi.org)

## PROPORTIONS



## CLARITY CHARACTERISTICS



## KEY TO SYMBOLS

Red symbols indicate internal characteristics.  
Green symbols indicate external characteristics.

LABORATORY GROWN  
DIAMOND REPORT

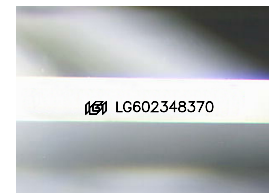
## GRADING SCALES

## CLARITY

IF	VVS <sup>1-2</sup>	VS <sup>1-2</sup>	SI <sup>1-2</sup>	I <sup>1-3</sup>
Internally Flawless	Very Very Slightly Included	Very Slightly Included	Slightly Included	Included

**COLOR**

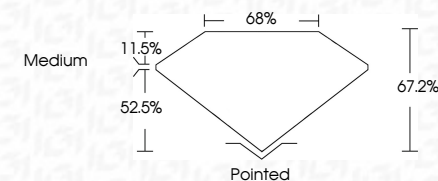
D E F G H I J Faint Very Light Light



Sample Image Used



November 7, 2023	
IGI Report Number	LG602348370
Description	LABORATORY GROWN DIAMOND
Shape and Cutting Style	SQUARE PRINCESS
Measurements	9.51 X 9.42 X 6.33 MM
<b>GRADING RESULTS</b>	
Carat Weight	5.01 CARATS
Color Grade	E
Clarity Grade	VS 1
Cut Grade	EXCELLENT



### ADDITIONAL GRADING INFORMATION

Polish	EXCELLENT
Symmetry	EXCELLENT
Fluorescence	NONE
Inscription(s)	151 LG-602348370

Comments: This Laboratory Grown Diamond was created by Chemical Vapor Deposition (CVD) growth process and may include post-growth treatment.



© IGI 2020, International Gemological Institute

FD - 10 20



THIS DOCUMENT WAS PRODUCED WITH THE FOLLOWING SECURITY MEASURES: SPECIAL DOCUMENT PAPER, INK SCREENS, WATERMARK, BACKGROUND DESIGNS, HOLOGRAM AND OTHER SECURITY FEATURES NOT LISTED AND DO EXCEED DOCUMENT SECURITY INDUSTRY GUIDELINES

**www.igi.org**

November 7, 2023  
 IGI Report No LG602  
 SQUARE PRINCESS

5.01 CARATS	VS 1	EXCELLENT	67.2%	66%	Medium	Pointed
						EXCELLENT
						EXCELLENT
						NONE

**Comments:**  
This Laboratory Grown Diamond was created by Chemical Vapor Deposition (CVD) growth process and may include