

ELECTRONIC COPY

LABORATORY GROWN DIAMOND REPORT

October 2, 2023	
IGI Report Number	LG602374368
Description	LABORATORY GROWN DIAMOND
Shape and Cutting Style	ROUND BRILLIANT
Measurements	7.17 - 7.24 X 4.42 MM

GRADING RESULTS

Carat Weight	1.40 CARAT
Color Grade	E
Clarity Grade	VS 2
Cut Grade	IDEAL

ADDITIONAL GRADING INFORMATION

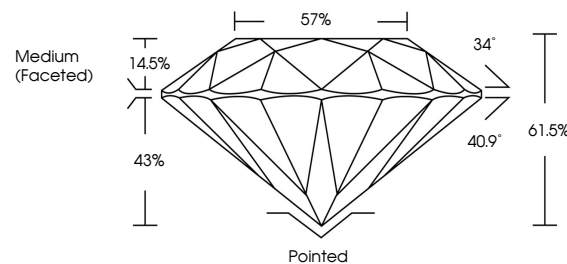
Polish	EXCELLENT
Symmetry	EXCELLENT
Fluorescence	NONE
Inscription(s)	15 LG602374368

Comments: This Laboratory Grown Diamond was created by Chemical Vapor Deposition (CVD) growth process and may include post-growth treatment.
Type IIa

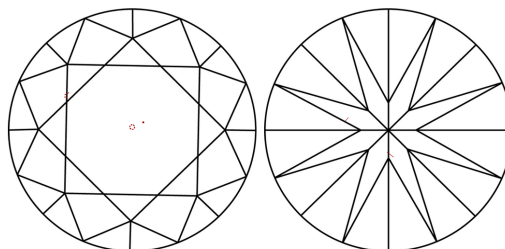
LABORATORY GROWN DIAMOND REPORT

LG602374368
Report verification at igi.org

PROPORTIONS



CLARITY CHARACTERISTICS



KEY TO SYMBOLS

Red symbols indicate internal characteristics.
Green symbols indicate external characteristics.

LABORATORY GROWN
DIAMOND REPORT

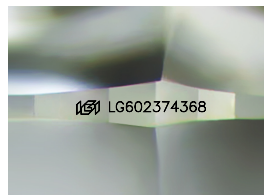
GRADING SCALES

CLARITY

IF	VVS ¹⁻²	VS ¹⁻²	SI ¹⁻²	I ¹⁻³
Internally Flawless	Very Very Slightly Included	Very Slightly Included	Slightly Included	Included

COLOR

D E F G H I J Faint Very Light Light



Sample Image Used



© IGI 2020, International Gemological Institute

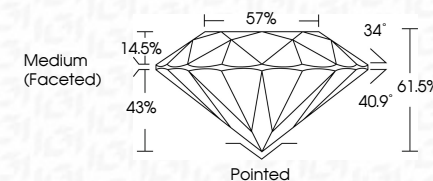
FD - 10 20

LABORATORY GROWN DIAMOND REPORT

October 2, 2023	
IGI Report Number	LG602374368
Description	LABORATORY GROWN DIAMOND
Shape and Cutting Style	ROUND BRILLIANT
Measurements	7.17 - 7.24 X 4.42 MM

GRADING RESULTS

Carat Weight	1.40 CARAT
Color Grade	E
Clarity Grade	VS 2
Cut Grade	IDEAL



ADDITIONAL GRADING INFORMATION

Polish	EXCELLENT
Symmetry	EXCELLENT
Fluorescence	NONE
Inscription(s)	 LG-602374368

Comments: This Laboratory Grown Diamond was created by Chemical Vapor Deposition (CVD) growth process and may include post-growth treatment.
Type IIa



October 2, 2023	GI Report No LG420374368	ROUND BRILLIANT	1.17 - 7.24 X 4.42 MM	1.40 CARAT	E	Vs2	IDEAL	61.5%	57%	Medium Faceted	Pointed	EXCELLENT	EXCELLENT	NONE	4691 LG420374368	Comments: This is a Fancy Crown Diamond was treated by Chemical Vapor Deposition (CVD) growth process and may include post-growth treatment.
		Color Grade	Clarity Grade	Cut Grade	Depth	Table	Girdle				Quiet	Polish	Symmetry	Fluorescence	Inscriptions(s)	Type I/IIa