

ELECTRONIC COPY

LABORATORY GROWN DIAMOND REPORT

| | |
|-------------------------|-----------------------------|
| October 12, 2023 | |
| IGI Report Number | LG604385343 |
| Description | LABORATORY GROWN DIAMOND |
| Shape and Cutting Style | ROUND BRILLIANT |
| Measurements | 6.71 - 6.73 X 4.02 MM |

GRADING RESULTS

| | |
|---------------|------------|
| Carat Weight | 1.11 CARAT |
| Color Grade | E |
| Clarity Grade | SI 1 |
| Cut Grade | IDEAL |

ADDITIONAL GRADING INFORMATION

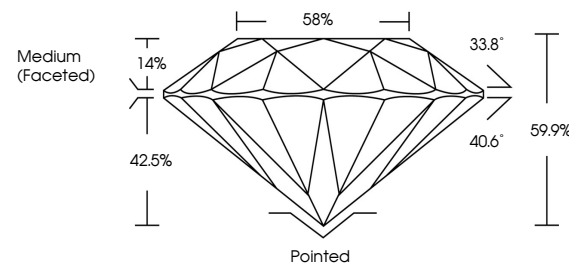
| | |
|----------------|---|
| Polish | EXCELLENT |
| Symmetry | EXCELLENT |
| Fluorescence | NONE |
| Inscription(s) |  LG604385343 |

Comments: This Laboratory Grown Diamond was created by Chemical Vapor Deposition (CVD) growth process and may include post-growth treatment.
Type IIa

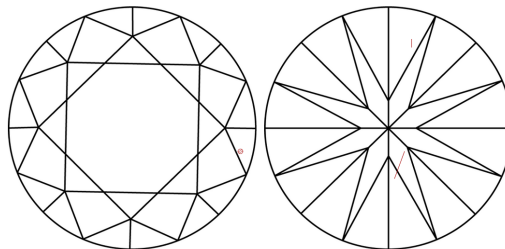
LABORATORY GROWN DIAMOND REPORT

LG604385343
Report verification at igi.org

PROPORTIONS



CLARITY CHARACTERISTICS



KEY TO SYMBOLS

Red symbols indicate internal characteristics.
Green symbols indicate external characteristics.

LABORATORY GROWN
DIAMOND REPORT

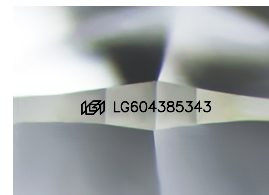
GRADING SCALES

CLARITY

| IF | VVS ¹⁻² | VS ¹⁻² | SI ¹⁻² | I ¹⁻³ |
|------------------------|--------------------------------|---------------------------|----------------------|------------------|
| Internally Flawless | Very Very Slightly Included | Very Slightly Included | Slightly Included | Included |

COLOR

D E F G H I J Faint Very Light Light



Sample Image Used



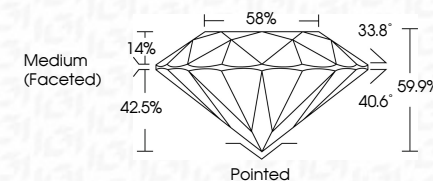
© IGI 2020, International Gemological Institute

FD - 10 20


LABORATORY GROWN DIAMOND REPORT

| | |
|-------------------------|-----------------------------|
| October 12, 2023 | |
| IGI Report Number | LG604385343 |
| Description | LABORATORY GROWN DIAMOND |
| Shape and Cutting Style | ROUND BRILLIANT |
| Measurements | 6.71 - 6.73 X 4.02 MM |

| GRADING RESULTS | |
|-----------------|------------|
| Carat Weight | 1.11 CARAT |
| Color Grade | E |
| Clarity Grade | SI 1 |
| Cut Grade | IDEAL |



ADDITIONAL GRADING INFORMATION

| | |
|---|---|
| Polish | EXCELLENT |
| Symmetry | EXCELLENT |
| Fluorescence | NONE |
| Inscription(s) |  LG604385343 |
| <p>Comments: This Laboratory Grown Diamond was created by Chemical Vapor Deposition (CVD) growth process and may include post-growth treatment.</p> <p>Type IIa</p> | |



| | | |
|--|--------------------------|--|
| October 12, 2023 | GJ Report No LG604983543 | |
| ROUND BRILLIANT | | |
| 3.71 - 4.73 x 4.02 MM | | |
| Carat Weight | 1.11 CARAT | |
| Color Grade | E | |
| Cut Grade | S I | |
| Depth | IDEAL | |
| Table | 59.9% | |
| Girdle | 59% | |
| | Medium Faceted | |
| Culet | Pointed | |
| Polish | EXCELLENT | |
| Symmetry | EXCELLENT | |
| Fluorescence | NONE | |
| Inscriptions(s) | lg604983543 | |
| Comments: | | |
| This is a Natural, Fancy Cut, Grown Diamond was treated by Chemical Vapor Deposition (CVD) growth process and may include post-growth treatment. | | |
| Type IIa | | |