

ELECTRONIC COPY

LABORATORY GROWN DIAMOND REPORT

November 28, 2023	
IGI Report Number	LG606336316
Description	LABORATORY GROWN DIAMOND
Shape and Cutting Style	CUSHION MODIFIED BRILLIANT
Measurements	8.73 X 6.69 X 4.20 MM

GRADING RESULTS

Carat Weight	1.96 CARAT
Color Grade	G
Clarity Grade	VVS 2
Cut Grade	EXCELLENT

ADDITIONAL GRADING INFORMATION

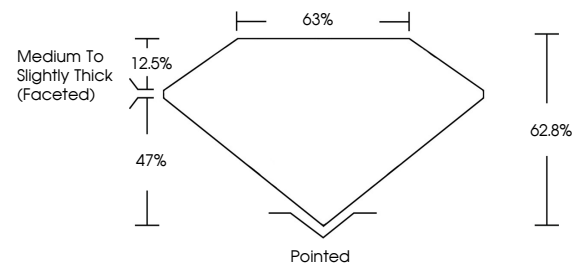
Polish	EXCELLENT
Symmetry	EXCELLENT
Fluorescence	NONE
Inscription(s)	 LG606336316

Comments: As Grown - No indication of post-growth treatment.
This Laboratory Grown Diamond was created by Chemical Vapor Deposition (CVD) growth process.

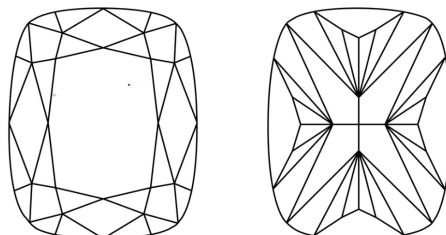
LABORATORY GROWN DIAMOND REPORT

LG606336316
Report verification at lgi.org

PROPORTIONS



CLARITY CHARACTERISTICS



KEY TO SYMBOLS

Red symbols indicate internal characteristics.
Green symbols indicate external characteristics.

LABORATORY GROWN
DIAMOND REPORT

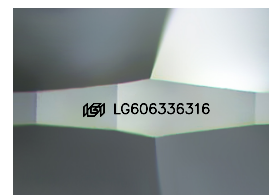
GRADING SCALES

CLARITY

IF	VVS ¹⁻²	VS ¹⁻²	SI ¹⁻²	I ¹⁻³
Internally Flawless	Very Very Slightly Included	Very Slightly Included	Slightly Included	Included

COLOR

D E F G H I J Faint Very Light Light



Sample Image Used



© IGI 2020, International Gemological Institute

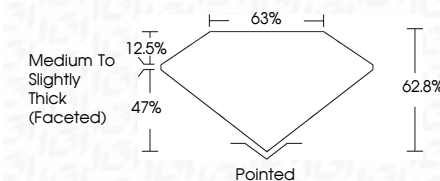
FD - 10 20



November 28, 2023	
IGI Report Number	LG606336316
Description	LABORATORY GROWN DIAMOND
Shape and Cutting Style	CUSHION MODIFIED BRILLIANT
Measurements	8.73 X 6.69 X 4.20 MM

GRADING RESULTS

Carat Weight	1.96 CARAT
Color Grade	G
Clarity Grade	VVS 2
Cut Grade	EXCELLENT



ADDITIONAL GRADING INFORMATION

Polish	EXCELLENT
Symmetry	EXCELLENT
Fluorescence	NONE
Inscription(s)	LG606336316
<p>Comments: As Grown - No indication of post-growth treatment.</p> <p>This Laboratory Grown Diamond was created by Chemical Vapor Deposition (CVD) growth process.</p>	

November 26, 2023	1.9% CARAT
GI Report No LG405359316	
CUSHION MODIFIED BRILLIANT	
7.73 X 6.69 X 4.20 MM	
Carat Weight	
Color Grade	
Clarity Grade	VVS 2
Cut Grade	EXCELLENT
Depth	62.8%
Table	63%
Grades	Medium to slightly thick faceted
Claret	Painted
Polish	EXCELLENT
Symmetry	EXCELLENT
Fluorescence	NONE
Observation(s)	6891 LG405359316
Comments:	
As Grown - No indication of post-growth treatment.	
The Heavy Grower Diamond was tested by Chemical Vapor Deposition (CVD) growth process.	

Comments:
As Grown - No indication of post-growth treatment.
This Laboratory Grown Diamond was created by Chemical Vapor Deposition