

ELECTRONIC COPY

LABORATORY GROWN DIAMOND REPORT

November 1, 2023	
IGI Report Number	LG606346044
Description	LABORATORY GROWN DIAMOND
Shape and Cutting Style	ROUND BRILLIANT
Measurements	7.22 - 7.26 X 4.40 MM

GRADING RESULTS

Carat Weight	1.42 CARAT
Color Grade	F
Clarity Grade	VS 1
Cut Grade	IDEAL

ADDITIONAL GRADING INFORMATION

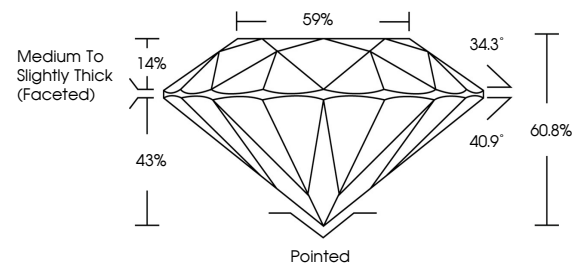
Polish	EXCELLENT
Symmetry	EXCELLENT
Fluorescence	NONE
Inscription(s)	15 LG606346044

Comments: This Laboratory Grown Diamond was created by Chemical Vapor Deposition (CVD) growth process and may include post-growth treatment.
Type IIa

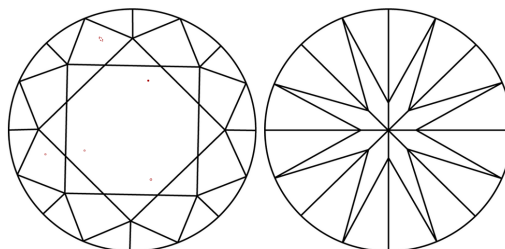
LABORATORY GROWN DIAMOND REPORT

LG606346044
Report verification at igi.org

PROPORTIONS



CLARITY CHARACTERISTICS



KEY TO SYMBOLS

Red symbols indicate internal characteristics.
Green symbols indicate external characteristics.

LABORATORY GROWN
DIAMOND REPORT

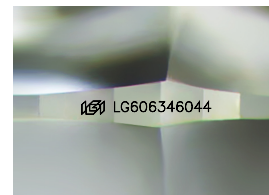
GRADING SCALES

CLARITY

IF	VVS ¹⁻²	VS ¹⁻²	SI ¹⁻²	I ¹⁻³
Internally Flawless	Very Very Slightly Included	Very Slightly Included	Slightly Included	Included

COLOR

D E F G H I J Faint Very Light Light



Sample Image Used

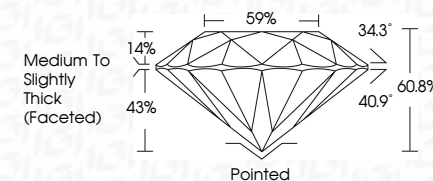


© IGI 2020, International Gemological Institute


FD - 10 20



November 1, 2023	
IGI Report Number	LG606346044
Description	LABORATORY GROWN DIAMOND
Shape and Cutting Style	ROUND BRILLIANT
Measurements	7.22 - 7.26 X 4.40 MM
GRADING RESULTS	
Carat Weight	1.42 CARAT
Color Grade	F
Clarity Grade	VS 1
Cut Grade	IDEAL



ADDITIONAL GRADING INFORMATION

Polish	EXCELLENT
Symmetry	EXCELLENT
Fluorescence	NONE
Inscription(s)	 LG606346044
<p>Comments: This Laboratory Grown Diamond was created by Chemical Vapor Deposition (CVD) growth process and may include post-growth treatment.</p> <p>Type IIa</p>	

November 1, 2023	GI Report No LG60364044	
ROUND BRILLIANT	1.42 CARAT	
7.22 - 7.26 X 4.40 MM	Color Weight	F
	Color Grade	VS 1
	Clarity Grade	IDEAL
	Our Grade	60.8%
	Depth	89%
	Table	Medium to Slightly Thick (Faceted)
	Girdle	
	Culet	Pointed
	Polish	EXCELLENT
	Symmetry	EXCELLENT
	Fluorescence	NONE
	Inscriptions(s)	161 LG60364044
<p>Comments:</p> <p>This Heavy Crown Diamond was treated by Chemical Vapor Deposition (CVD) growth process and may include post-growth treatment.</p> <p>Type IIA</p>		

Comments:
This Laboratory Grown Diamond was created by Chemical Vapor Deposition (CVD) growth process and may include post-growth treatment.