



ELECTRONIC COPY

LABORATORY GROWN DIAMOND REPORT

| | |
|-------------------------|-----------------------------|
| November 7, 2023 | |
| IGI Report Number | LG607393304 |
| Description | LABORATORY GROWN DIAMOND |
| Shape and Cutting Style | ROUND BRILLIANT |
| Measurements | 8.52 - 8.59 X 5.21 MM |

GRADING RESULTS

| | |
|---------------|-------------|
| Carat Weight | 2.34 CARATS |
| Color Grade | G |
| Clarity Grade | VS 2 |
| Cut Grade | IDEAL |

ADDITIONAL GRADING INFORMATION

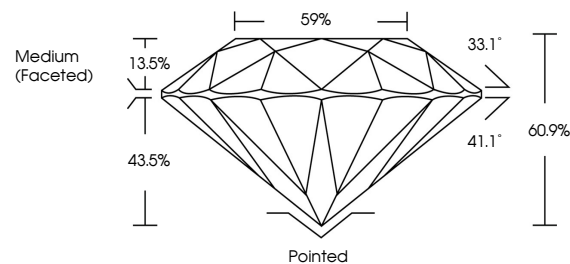
| | |
|----------------|----------------|
| Polish | EXCELLENT |
| Symmetry | EXCELLENT |
| Fluorescence | NONE |
| Inscription(s) | 15 LG607393304 |

Comments: This Laboratory Grown Diamond was created by Chemical Vapor Deposition (CVD) growth process and may include post-growth treatment.
Type IIa

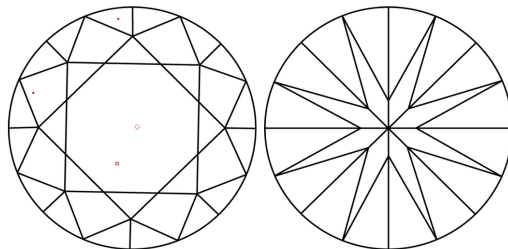
LABORATORY GROWN DIAMOND REPORT

LG607393304
Report verification at igi.org

PROPORTIONS



CLARITY CHARACTERISTICS



KEY TO SYMBOLS

Red symbols indicate internal characteristics.
Green symbols indicate external characteristics.

LABORATORY GROWN
DIAMOND REPORT

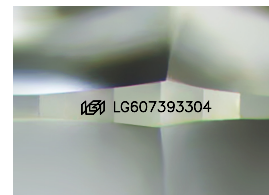
GRADING SCALES

CLARITY

| IF | VVS ¹⁻² | VS ¹⁻² | SI ¹⁻² | I ¹⁻³ |
|------------------------|--------------------------------|---------------------------|----------------------|------------------|
| Internally Flawless | Very Very Slightly Included | Very Slightly Included | Slightly Included | Included |

COLOR

D E F G H I J Faint Very Light Light



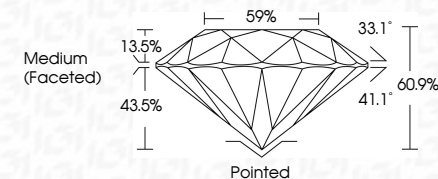
Sample Image Used



| | |
|-------------------------|-----------------------------|
| November 7, 2023 | |
| IGI Report Number | LG607393304 |
| Description | LABORATORY GROWN DIAMOND |
| Shape and Cutting Style | ROUND BRILLIANT |
| Measurements | 8.52 - 8.59 X 5.21 MM |

GRADING RESULTS

| | |
|---------------|-------------|
| Carat Weight | 2.34 CARATS |
| Color Grade | G |
| Clarity Grade | VS 2 |
| Cut Grade | IDEAL |



ADDITIONAL GRADING INFORMATION

| | |
|----------------|--|
| Polish | EXCELLENT |
| Symmetry | EXCELLENT |
| Fluorescence | NONE |
| Inscription(s) |  LG-607393304 |

Comments: This Laboratory Grown Diamond was created by Chemical Vapor Deposition (CVD) growth process and may include post-growth treatment.
Type IIa



© IGI 2020, International Gemological Institute

FD - 10 20

www.igi.org

THIS DOCUMENT WAS PRODUCED WITH THE FOLLOWING SECURITY MEASURES: SPECIAL DOCUMENT PAPER, INK SCREENS, WATERMARK, BACKGROUND DESIGNS, HOLOGRAM AND OTHER SECURITY FEATURES NOT LISTED AND DO EXCEED DOCUMENT SECURITY INDUSTRY GUIDELINES

November 7, 2023
IGI Report No LG607393304
ROUND BRILLIANT

| | | |
|-----------------------|------------------|-----------|
| 8.52 - 8.59 X 5.21 MM | 2.34 CARATS | |
| Carat Weight | | |
| Color Grade | | |
| Clarity Grade | VS 2 | Pointed |
| Cut Grade | IDEAL | EXCELLENT |
| Depth | 60.9% | EXCELLENT |
| Table | 59% | NONE |
| Girdle | Medium (Faceted) | |
| Culet | | |
| Polish | | |
| Symmetry | | |
| Fluorescence | | |

Comments:
This Laboratory Grown Diamond was created by Chemical Vapor Deposition (CVD) growth process and may include post-growth treatment.