



ELECTRONIC COPY

LG614327785

Report verification at igi.org

LABORATORY GROWN DIAMOND REPORT

December 27, 2023
 IGI Report Number **LG614327785**
 Description **LABORATORY GROWN
DIAMOND**
 Shape and Cutting Style **OVAL BRILLIANT**
 Measurements **9.36 X 6.61 X 4.03 MM**

GRADING RESULTS

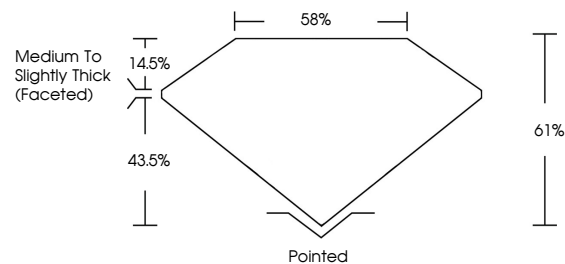
Carat Weight **1.54 CARAT**
 Color Grade **E**
 Clarity Grade **VS 1**

ADDITIONAL GRADING INFORMATION

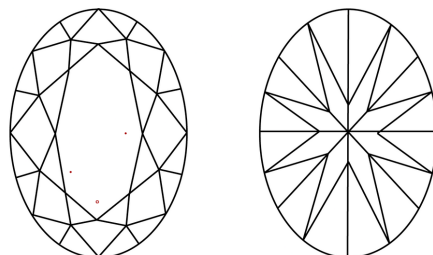
Polish **EXCELLENT**
 Symmetry **EXCELLENT**
 Fluorescence **NONE**
 Inscription(s) **IGI LG614327785**

Comments: This Laboratory Grown Diamond was created by Chemical Vapor Deposition (CVD) growth process and may include post-growth treatment. Type IIa

PROPORTIONS



CLARITY CHARACTERISTICS



KEY TO SYMBOLS

Red symbols indicate internal characteristics.
 Green symbols indicate external characteristics.

GRADING SCALES

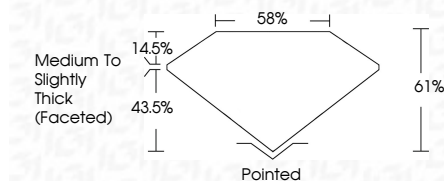
CLARITY

| IF | VVS ¹⁻² | VS ¹⁻² | SI ¹⁻² | I ¹⁻³ |
|---------------------|-----------------------------|------------------------|-------------------|------------------|
| Internally Flawless | Very Very Slightly Included | Very Slightly Included | Slightly Included | Included |

COLOR

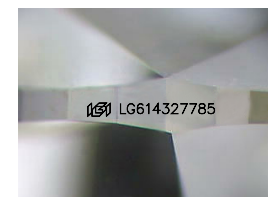
| D | E | F | G | H | I | J | Faint | Very Light | Light |
|---|---|---|---|---|---|---|-------|------------|-------|
|---|---|---|---|---|---|---|-------|------------|-------|

December 27, 2023
 IGI Report Number **LG614327785**
 Description **LABORATORY GROWN
DIAMOND**
 Shape and Cutting Style **OVAL BRILLIANT**
 Measurements **9.36 X 6.61 X 4.03 MM**
GRADING RESULTS
 Carat Weight **1.54 CARAT**
 Color Grade **E**
 Clarity Grade **VS 1**



ADDITIONAL GRADING INFORMATION

Polish **EXCELLENT**
 Symmetry **EXCELLENT**
 Fluorescence **NONE**
 Inscription(s) **IGI LG614327785**
 Comments: This Laboratory Grown Diamond was created by Chemical Vapor Deposition (CVD) growth process and may include post-growth treatment. Type IIa



Sample Image Used



IGI

December 27, 2023
 IGI Report No LG614327785
OVAL BRILLIANT
 9.36 X 6.61 X 4.03 MM
 Carat Weight **1.54 CARAT**
 Color Grade **E**
 Clarity Grade **VS 1**
 Depth **61%**
 Table **58%**
 Girdle **Medium to Slightly Thick (Faceted)**
 Culet **Pointed**
 Polish **EXCELLENT**
 Symmetry **EXCELLENT**
 Fluorescence **NONE**
 Inscription(s) **IGI LG614327785**

Comments: This Laboratory Grown Diamond was created by Chemical Vapor Deposition (CVD) growth process and may include post-growth treatment. Type IIa