



ELECTRONIC COPY

LABORATORY GROWN DIAMOND REPORT

January 4, 2024	
IGI Report Number	LG615358324
Description	LABORATORY GROWN DIAMOND
Shape and Cutting Style	ROUND BRILLIANT
Measurements	9.21 - 9.27 X 5.50 MM

GRADING RESULTS

Carat Weight	2.87 CARATS
Color Grade	F
Clarity Grade	VS 1
Cut Grade	IDEAL

ADDITIONAL GRADING INFORMATION

Polish	EXCELLENT
Symmetry	EXCELLENT
Fluorescence	NONE
Inscription(s)	 LG615358324

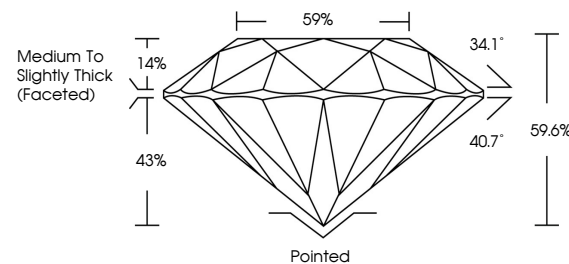
Comments: This Laboratory Grown Diamond was created by Chemical Vapor Deposition (CVD) growth process and may include post-growth treatment.
Type IIa

LABORATORY GROWN DIAMOND REPORT

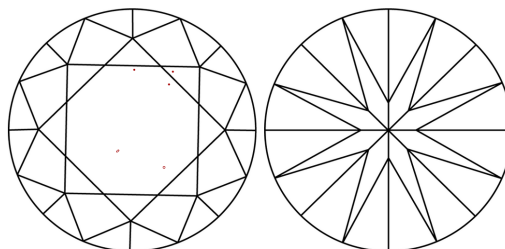
LG615358324

Report verification at igi.org

PROPORTIONS



CLARITY CHARACTERISTICS



KEY TO SYMBOLS

Red symbols indicate internal characteristics.
Green symbols indicate external characteristics.

LABORATORY GROWN
DIAMOND REPORT

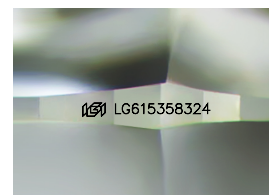
GRADING SCALES

CLARITY

IF	VVS ¹⁻²	VS ¹⁻²	SI ¹⁻²	I ¹⁻³
Internally Flawless	Very Very Slightly Included	Very Slightly Included	Slightly Included	Included

COLOR

D E F G H I J Faint Very Light Light



Sample Image Used



© IGI 2020, International Gemological Institute

FD - 10 20

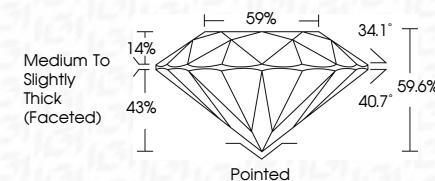
www.igi.org

LABORATORY GROWN DIAMOND REPORT

January 4, 2024	
IGI Report Number	LG615358324
Description	LABORATORY GROWN DIAMOND
Shape and Cutting Style	ROUND BRILLIANT
Measurements	9.21 - 9.27 X 5.50 MM

GRADING RESULTS

Carat Weight	2.87 CARATS
Color Grade	F
Clarity Grade	VS 1
Cut Grade	IDEAL



ADDITIONAL GRADING INFORMATION

Polish	EXCELLENT
Symmetry	EXCELLENT
Fluorescence	NONE
Inscription(s)	 LG615358324

Comments: This Laboratory Grown Diamond was created by Chemical Vapor Deposition (CVD) growth process and may include post-growth treatment.
Type IIa



IG

January 4, 2024
GI Report No LG615358324
ROUND BRILLIANT

2.21 - 9.27 X 5.50 MM	2.87 CARATS	VS 1	Pointed
Carat Weight	IDEAL	59.6%	EXCELLENT
Color Grade	59.6%	Medium to slightly Thick (faceted)	EXCELLENT
Clarity Grade	VS 1		NONE
Cut Grade			VERY GOOD
Depth			FLUORESCENCE
Table			
Girdle			
Culet			
Polish			
Symmetry			
Fluorescence			

Comments:
This Laboratory Grown Diamond was created by Chemical Vapor Deposition (CVD) growth process and may include post-growth treatment.