



ELECTRONIC COPY

LABORATORY GROWN DIAMOND REPORT

January 5, 2024	
IGI Report Number	LG616408158
Description	LABORATORY GROWN DIAMOND
Shape and Cutting Style	ROUND BRILLIANT
Measurements	7.93 - 7.96 X 4.89 MM

GRADING RESULTS

Carat Weight	1.89 CARAT
Color Grade	G
Clarity Grade	VS 2
Cut Grade	IDEAL

ADDITIONAL GRADING INFORMATION

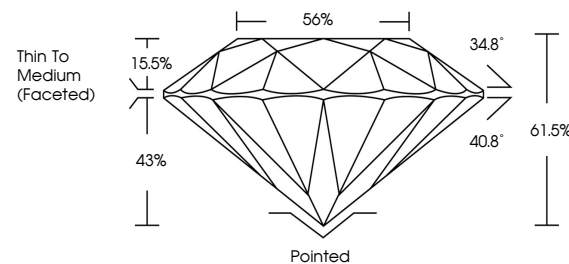
Polish	EXCELLENT
Symmetry	EXCELLENT
Fluorescence	NONE
Inscription(s)	15 LG616408158

Comments: This Laboratory Grown Diamond was created by Chemical Vapor Deposition (CVD) growth process and may include post-growth treatment. Type IIa

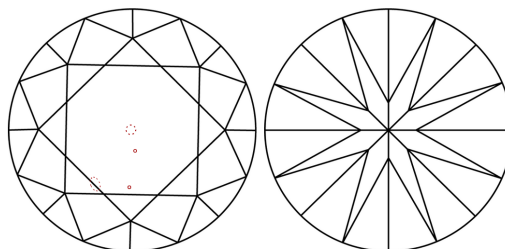
LABORATORY GROWN DIAMOND REPORT

LG616408158
Report verification at lgi.org

PROPORTIONS



CLARITY CHARACTERISTICS



KEY TO SYMBOLS

Red symbols indicate internal characteristics.
Green symbols indicate external characteristics.

LABORATORY GROWN
DIAMOND REPORT

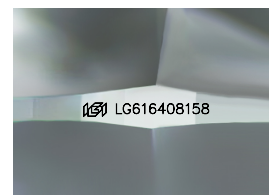
GRADING SCALES

CLARITY

IF	VVS ¹⁻²	VS ¹⁻²	SI ¹⁻²	I ¹⁻³
Internally Flawless	Very Very Slightly Included	Very Slightly Included	Slightly Included	Included

COLOR

D E F G H I J Faint Very Light Light



Sample Image Used

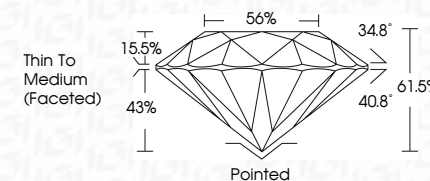


© IGI 2020, International Gemological Institute

FD - 10 20



January 5, 2024	
IGI Report Number	LG616408158
Description	LABORATORY GROWN DIAMOND
Shape and Cutting Style	ROUND BRILLIANT
Measurements	7.93 - 7.96 X 4.89 MM
GRADING RESULTS	
Carat Weight	1.89 CARAT
Color Grade	G
Clarity Grade	VS 2
Cut Grade	IDEAL



ADDITIONAL GRADING INFORMATION

Polish	EXCELLENT
Symmetry	EXCELLENT
Fluorescence	NONE
Inscription(s)	 LG616408158

Comments: This Laboratory Grown Diamond was created by Chemical Vapor Deposition (CVD) growth process and may include post-growth treatment.
Type IIa

January 5, 2024	GI Report No LG5 14008 158	1.89 CARAT
ROUND BRILLIANT		G
9.99 - 7.95 X 4.89 MM		V5 2
Carat Weight	Clarify Grade	IDEAL
Color Grade	Cut Grade	61.8%
	Depth	56%
	Table	Thin To Medium (Faceted)
	Girdle	Pointed
	Culet	EXCELLENT
	Polish	EXCELLENT
	Symmetry	NONE
	Fluorescence	
	Inscriptions(s)	LG5 LG5 14008 158

Comments:
This Laboratory Grown Diamond was created by Chemical Vapor Deposition (CVD) growth process and may include trace growth treatment.

Comments:
This Laboratory Grown Diamond was created by Chemical Vapor Deposition (CVD) growth process and may include post-growth treatment.