



**ELECTRONIC COPY**

## LABORATORY GROWN DIAMOND REPORT

January 9, 2024	
IGI Report Number	LG616420771
Description	LABORATORY GROWN DIAMOND
Shape and Cutting Style	ROUND BRILLIANT
Measurements	10.17 - 10.21 X 6.06 MM

## GRADING RESULTS

Carat Weight	3.79 CARATS
Color Grade	G
Clarity Grade	VS 1
Cut Grade	IDEAL

### ADDITIONAL GRADING INFORMATION

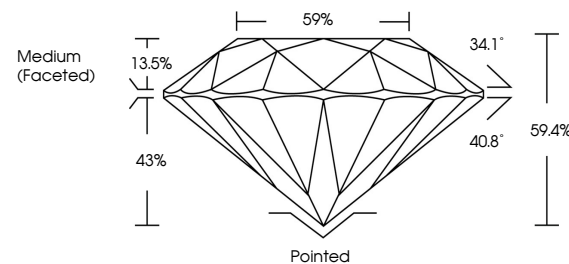
Polish	EXCELLENT
Symmetry	EXCELLENT
Fluorescence	NONE
Inscription(s)	15 LG616420771

Comments: This Laboratory Grown Diamond was created by Chemical Vapor Deposition (CVD) growth process and may include post-growth treatment. Type IIa

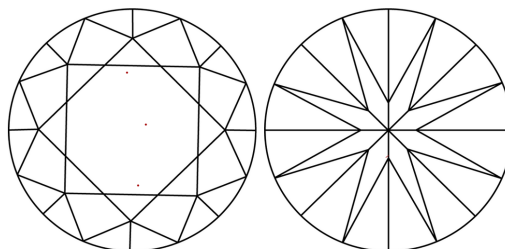
## LABORATORY GROWN DIAMOND REPORT

LG616420771  
Report verification at [igi.org](https://igi.org)

## PROPORTIONS



## CLARITY CHARACTERISTICS



## KEY TO SYMBOLS

Red symbols indicate internal characteristics.  
Green symbols indicate external characteristics.

LABORATORY GROWN  
DIAMOND REPORT

## GRADING SCALES

## CLARITY

IF	VVS <sup>1-2</sup>	VS <sup>1-2</sup>	SI <sup>1-2</sup>	I <sup>1-3</sup>
Internally Flawless	Very Very Slightly Included	Very Slightly Included	Slightly Included	Included

**COLOR**

D E F G H I J Faint Very Light Light



Sample Image Used

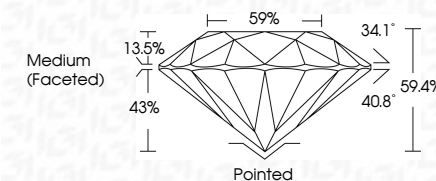


© IGI 2020, International Gemological Institute

FD - 10 20



January 9, 2024	
IGI Report Number	LG616420771
Description	LABORATORY GROWN DIAMOND
Shape and Cutting Style	ROUND BRILLIANT
Measurements	10.17 - 10.21 X 6.06 MM
<b>GRADING RESULTS</b>	
Carat Weight	3.79 CARATS
Color Grade	G
Clarity Grade	VS 1
Cut Grade	IDEAL



### ADDITIONAL GRADING INFORMATION

Polish	EXCELLENT
Symmetry	EXCELLENT
Fluorescence	NONE
Inscription(s)	(15) LG616420771

Comments: This Laboratory Grown Diamond was created by Chemical Vapor Deposition (CVD) growth process and may include post-growth treatment.  
Type IIa

January 9, 2024	
GJ Report No. LSG616420771	
SOUND BRILLIANT	
10.10 - 10.21 X 0.08 MM	3.79 CARATS
Carat Weight	G
Color Grade	VS1
Clarity Grade	IDEAL
Cut Grade	59.4%
Depth	59%
Table	Medium (Faceted)
Girdle	Poished
Culet	EXCELLENT
Polish	B
Symmetry	NONE
Fluorescence	#591 LGS16420771
Inscriptions(s)	

Comments:

Chemical Vapor Deposition was treated by Growth Diamond type IIa