



ELECTRONIC COPY

LABORATORY GROWN DIAMOND REPORT

January 10, 2024	
IGI Report Number	LG616420918
Description	LABORATORY GROWN DIAMOND
Shape and Cutting Style	ROUND BRILLIANT
Measurements	10.54 - 10.57 X 6.45 MM

GRADING RESULTS

Carat Weight	4.39 CARATS
Color Grade	F
Clarity Grade	SI 1
Cut Grade	IDEAL

ADDITIONAL GRADING INFORMATION

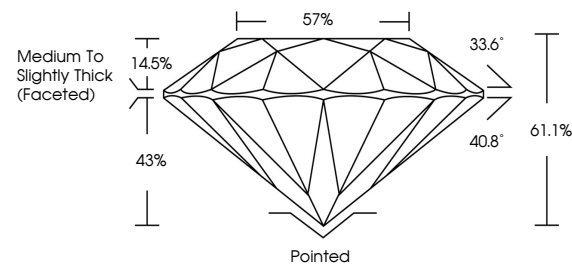
Polish	EXCELLENT
Symmetry	EXCELLENT
Fluorescence	NONE
Inscription(s)	15 LG616420918

Comments: This Laboratory Grown Diamond was created by Chemical Vapor Deposition (CVD) growth process and may include post-growth treatment.
Type IIa

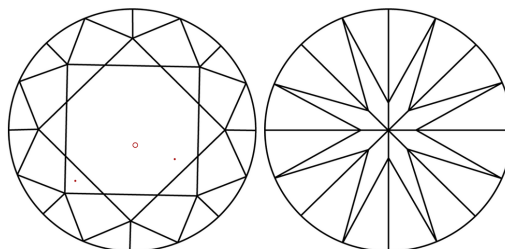
LABORATORY GROWN DIAMOND REPORT

LG616420918
Report verification at igi.org

PROPORTIONS



CLARITY CHARACTERISTICS



KEY TO SYMBOLS

Red symbols indicate internal characteristics.
Green symbols indicate external characteristics.

LABORATORY GROWN
DIAMOND REPORT

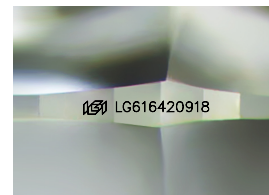
GRADING SCALES

CLARITY

IF	VVS ¹⁻²	VS ¹⁻²	SI ¹⁻²	I ¹⁻³
Internally Flawless	Very Very Slightly Included	Very Slightly Included	Slightly Included	Included

COLOR

D E F G H I J Faint Very Light Light



Sample Image Used

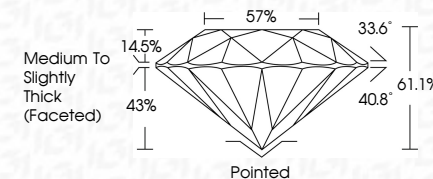


© IGI 2020, International Gemological Institute

FD - 10 20

LABORATORY GROWN DIAMOND REPORT

January 10, 2024	
IGI Report Number	LG616420918
Description	LABORATORY GROWN DIAMOND
Shape and Cutting Style	ROUND BRILLIANT
Measurements	10.54 - 10.57 X 6.45 MM
GRADING RESULTS	
Carat Weight	4.39 CARATS
Color Grade	F
Clarity Grade	SI 1
Cut Grade	IDEAL



ADDITIONAL GRADING INFORMATION

Polish	EXCELLENT
Symmetry	EXCELLENT
Fluorescence	NONE
Inscription(s)	 LG616420918

Comments: This Laboratory Grown Diamond was created by Chemical Vapor Deposition (CVD) growth process and may include post-growth treatment.
Type IIa



January 10, 2024	GI Report No L661462918	4.30 CARATS	S I 1	IDEAL	61.1%	57%	Medium to Slightly Medium to faceted	Parted	EXCELLENT	EXCELLENT	NONE	661 L661462918	Comments: Grown Diamond was created by Chemical Vapor Deposition (CVD) growth process and may include post-growth treatment.	
ROUND BRILLIANT	10.54 - 10.57 X 6.46 MM	Carat Weight	Color Grade	Clarity Grade	Cut Grade	Depth	Table	Girdle	Culet	Polish	Symmetry	Fluorescence	Inscription(s)	Type IIA

www.igi.org