



ELECTRONIC COPY

LABORATORY GROWN DIAMOND REPORT

January 6, 2024	
IGI Report Number	LG616493777
Description	LABORATORY GROWN DIAMOND
Shape and Cutting Style	ROUND BRILLIANT
Measurements	6.65 - 6.67 X 4.06 MM

GRADING RESULTS

Carat Weight	1.11 CARAT
Color Grade	E
Clarity Grade	VS 1
Cut Grade	IDEAL

ADDITIONAL GRADING INFORMATION

Polish	EXCELLENT
Symmetry	EXCELLENT
Fluorescence	NONE
Inscription(s)	 LG616493777

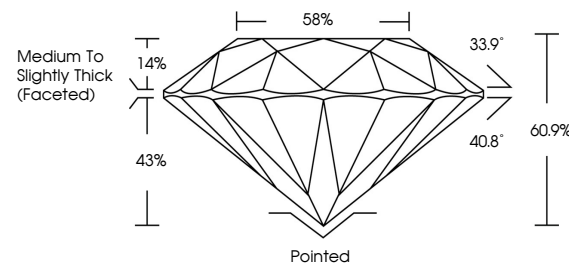
Comments: This Laboratory Grown Diamond was created by Chemical Vapor Deposition (CVD) growth process and may include post-growth treatment.
Type IIa

LABORATORY GROWN DIAMOND REPORT

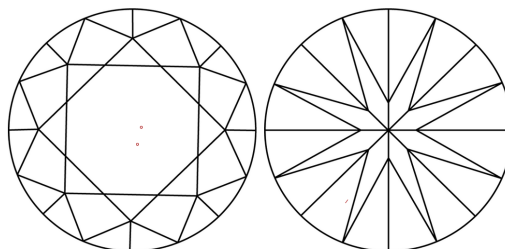
LG616493777

Report verification at igi.org

PROPORTIONS



CLARITY CHARACTERISTICS



KEY TO SYMBOLS

Red symbols indicate internal characteristics.
Green symbols indicate external characteristics.

LABORATORY GROWN
DIAMOND REPORT

GRADING SCALES

CLARITY

IF	VVS ¹⁻²	VS ¹⁻²	SI ¹⁻²	I ¹⁻³
Internally Flawless	Very Very Slightly Included	Very Slightly Included	Slightly Included	Included

COLOR

D E F G H I J Faint Very Light Light



Sample Image Used



© IGI 2020, International Gemological Institute

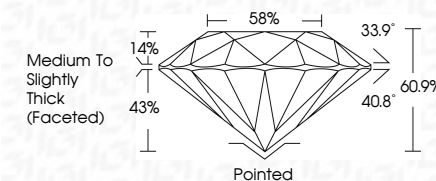
FD - 10 20

www.igi.org

LABORATORY GROWN DIAMOND REPORT

January 6, 2024	
IGI Report Number	LG616493777
Description	LABORATORY GROWN DIAMOND
Shape and Cutting Style	ROUND BRILLIANT
Measurements	6.65 - 6.67 X 4.06 MM

GRADING RESULTS	
Carat Weight	1.11 CARAT
Color Grade	E
Clarity Grade	VS 1
Cut Grade	IDEAL



ADDITIONAL GRADING INFORMATION

Polish	EXCELLENT
Symmetry	EXCELLENT
Fluorescence	NONE
Inscription(s)	(15) LG616493777

Comments: This Laboratory Grown Diamond was created by Chemical Vapor Deposition (CVD) growth process and may include post-growth treatment.
Type IIa



January 4, 2024	GI Report No. L561649377	1,11 CARAT	E	VS 1	IDEAL	60.1%	86%	Medium to Slightly Thick (Faceted)	Pointed	EXCELLENT	EXCELLENT	NONE	161 L561649377
ROUND BRILLIANT	4.65 - 4.67 x 4.06 MM	Color Grade	Clarity Grade	Cut Grade	Depth	Table	Girdle		Curve	Polish	Symmetry	Fluorescence	Inscriptions(s)
	Color Weight												

Comments:
 Created by Chemex Diamond was treated by Chemical Vapor Deposition (CVD) growth process and may include post-growth treatment.
 Type IIA