



ELECTRONIC COPY

LABORATORY GROWN DIAMOND REPORT

January 11, 2024	
IGI Report Number	LG617451268
Description	LABORATORY GROWN DIAMOND
Shape and Cutting Style	ROUND BRILLIANT
Measurements	10.38 - 10.43 X 6.15 MM

GRADING RESULTS

Carat Weight	4.06 CARATS
Color Grade	G
Clarity Grade	VVS 2
Cut Grade	EXCELLENT

ADDITIONAL GRADING INFORMATION

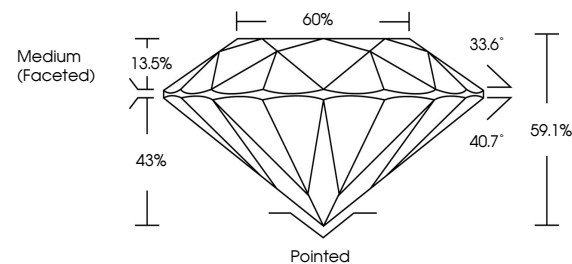
Polish	EXCELLENT
Symmetry	EXCELLENT
Fluorescence	NONE
Inscription(s)	15 LG617451268

Comments: This Laboratory Grown Diamond was created by Chemical Vapor Deposition (CVD) growth process and may include post-growth treatment.
Type IIa

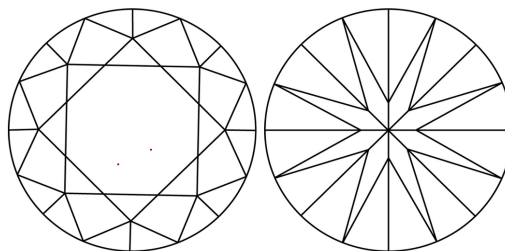
LABORATORY GROWN DIAMOND REPORT

LG617451268
Report verification at igi.org

PROPORTIONS



CLARITY CHARACTERISTICS



KEY TO SYMBOLS

Red symbols indicate internal characteristics.
Green symbols indicate external characteristics.

LABORATORY GROWN
DIAMOND REPORT

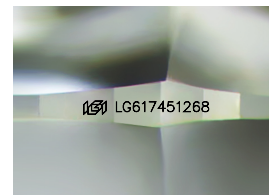
GRADING SCALES

CLARITY

IF	VVS ¹⁻²	VS ¹⁻²	SI ¹⁻²	I ¹⁻³
Internally Flawless	Very Very Slightly Included	Very Slightly Included	Slightly Included	Included

COLOR

D E F G H I J Faint Very Light Light



Sample Image Used



© IGI 2020, International Gemological Institute

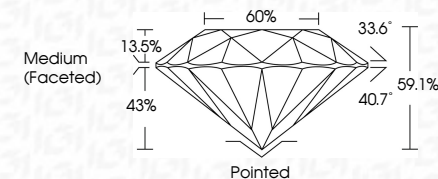
FD - 10 20

LABORATORY GROWN DIAMOND REPORT

January 11, 2024	
IGI Report Number	LG617451268
Description	LABORATORY GROWN DIAMOND
Shape and Cutting Style	ROUND BRILLIANT
Measurements	10.38 - 10.43 X 6.15 MM

GRADING RESULTS

Carat Weight	4.06 CARATS
Color Grade	G
Clarity Grade	VVS 2
Cut Grade	EXCELLENT



ADDITIONAL GRADING INFORMATION

Polish	EXCELLENT
Symmetry	EXCELLENT
Fluorescence	NONE
Inscription(s)	 LG617451268

Comments: This Laboratory Grown Diamond was created by Chemical Vapor Deposition (CVD) growth process and may include post-growth treatment.
Type IIa



January 11, 2024	
GI Report No. LG17451268	
ROUND BRILLIANT	
10.38 - 10.43 X 6.15 MM	
Carat Weight	4.06 CARATS
Color Grade	G
Clarity Grade	VS2
Cut Grade	EXCELLENT
Depth	59.1%
Table	60%
Grille	Medium (Faceted)
Culet	Pointed
Polish	EXCELLENT
Symmetry	EXCELLENT
Fluorescence	NONE
Inscriptions(s)	469 LG17451268
Comments:	
	This Laboratory Grown Diamond was created by Chemical Vapor Deposition and may include growth inclusions and may include post-growth treatment.
	Type IIa

www.igi.org