

**ELECTRONIC COPY**

## LABORATORY GROWN DIAMOND REPORT

January 27, 2024	
IGI Report Number	LG618488356
Description	LABORATORY GROWN DIAMOND
Shape and Cutting Style	ROUND BRILLIANT
Measurements	8.82 - 8.86 X 5.40 MM

## GRADING RESULTS

Carat Weight	2.58 CARATS
Color Grade	G
Clarity Grade	VS 2
Cut Grade	IDEAL

### ADDITIONAL GRADING INFORMATION

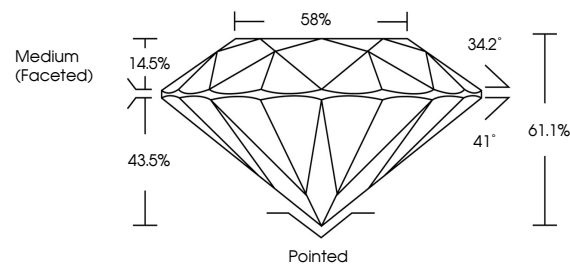
Polish	EXCELLENT
Symmetry	EXCELLENT
Fluorescence	NONE
Inscription(s)	LG618488356

Comments: This Laboratory Grown Diamond was created by Chemical Vapor Deposition (CVD) growth process and may include post-growth treatment.  
Type IIa

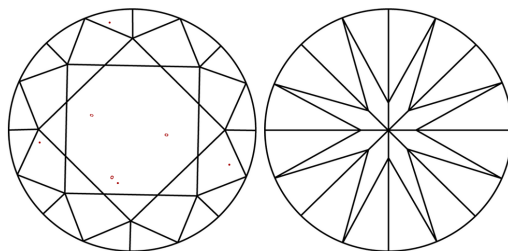
## LABORATORY GROWN DIAMOND REPORT

LG618488356  
Report verification at [lgi.org](https://lgi.org)

## PROPORTIONS



## CLARITY CHARACTERISTICS



## KEY TO SYMBOLS

Red symbols indicate internal characteristics.  
Green symbols indicate external characteristics.

LABORATORY GROWN  
DIAMOND REPORT

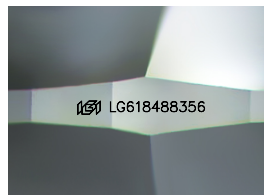
## GRADING SCALES

## CLARITY

IF	VVS <sup>1-2</sup>	VS <sup>1-2</sup>	SI <sup>1-2</sup>	I <sup>1-3</sup>
Internally Flawless	Very Very Slightly Included	Very Slightly Included	Slightly Included	Included

**COLOR**

D E F G H I J Faint Very Light Light



Sample Image Used



© IGI 2020, International Gemological Institute

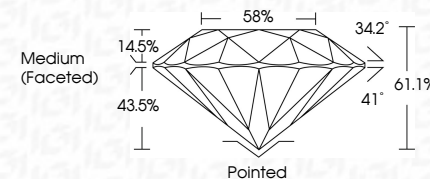
FD - 10 20

## LABORATORY GROWN DIAMOND REPORT


January 27, 2024	
IGI Report Number	LG618488356
Description	LABORATORY GROWN DIAMOND
Shape and Cutting Style	ROUND BRILLIANT
Measurements	8.82 - 8.86 X 5.40 MM

## GRADING RESULTS

Carat Weight	2.58 CARATS
Color Grade	G
Clarity Grade	VS 2
Cut Grade	IDEAL



### ADDITIONAL GRADING INFORMATION

Polish	EXCELLENT
Symmetry	EXCELLENT
Fluorescence	NONE
Inscription(s)	 LG618488356
<p>Comments: This Laboratory Grown Diamond was created by Chemical Vapor Deposition (CVD) growth process and may include post-growth treatment.</p> <p>Type IIa</p>	



IG

<b>January 27, 2024</b>	<b>G Report No LG51848355</b>	<b>ROUND BRILLIANT</b>	<b>6.82 - 6.86 X 5.40 MM</b>	<b>2.58 CARATS</b>	<b>G</b>	<b>VVS2</b>	<b>IDEAL</b>	<b>61.1%</b>	<b>59%</b>	<b>Medium Faceted</b>	<b>Pointed</b>	<b>EXCELLENT</b>	<b>EXCELLENT</b>	<b>NONE</b>	<b>IgR LG51848355</b>
<b>Carat Weight</b>	<b>Color Grade</b>	<b>Clarity Grade</b>	<b>Cut Grade</b>	<b>Depth</b>	<b>Table</b>	<b>Girdle</b>	<b>Culet</b>	<b>Poleish</b>	<b>Symmetry</b>	<b>Fluorescence</b>	<b>Inscriptions(s)</b>	<b>Comments:</b>			
												<b>This is a Natural, Fancy Crown Diamond was treated by Chemical Vapor Deposition (CVD) growth process and may include post-growth treatment.</b>			
												<b>Type IIA</b>			