



ELECTRONIC COPY

LABORATORY GROWN DIAMOND REPORT

February 10, 2024	
IGI Report Number	LG620454936
Description	LABORATORY GROWN DIAMOND
Shape and Cutting Style	ROUND BRILLIANT
Measurements	9.27 - 9.35 X 5.63 MM

GRADING RESULTS

Carat Weight	3.02 CARATS
Color Grade	I
Clarity Grade	VS 1
Cut Grade	IDEAL

ADDITIONAL GRADING INFORMATION

Polish	EXCELLENT
Symmetry	EXCELLENT
Fluorescence	NONE
Inscription(s)	15 LG620454936

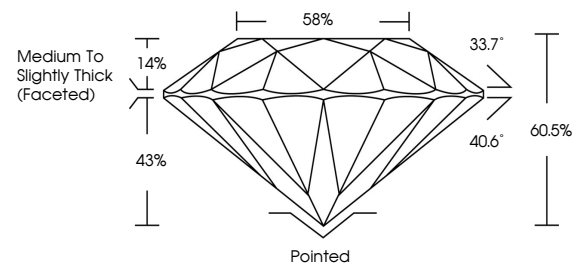
Comments: This Laboratory Grown Diamond was created by Chemical Vapor Deposition (CVD) growth process and may include post-growth treatment.
Type IIa

LABORATORY GROWN DIAMOND REPORT

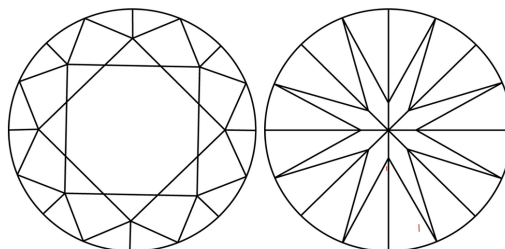
LG620454936

Report verification at igi.org

PROPORTIONS



CLARITY CHARACTERISTICS



KEY TO SYMBOLS

Red symbols indicate internal characteristics.
Green symbols indicate external characteristics.

LABORATORY GROWN
DIAMOND REPORT

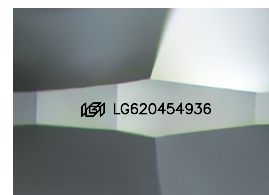
GRADING SCALES

CLARITY

IF	VVS ¹⁻²	VS ¹⁻²	SI ¹⁻²	I ¹⁻³
Internally Flawless	Very Very Slightly Included	Very Slightly Included	Slightly Included	Included

COLOR

D E F G H I J Faint Very Light Light



Sample Image Used



© IGI 2020, International Gemological Institute

FD - 10 20

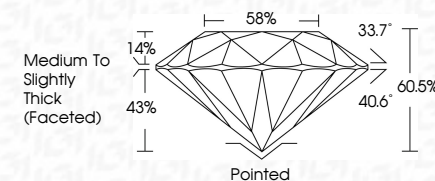
www.igi.org

LABORATORY GROWN DIAMOND REPORT

February 10, 2024	
IGI Report Number	LG620454936
Description	LABORATORY GROWN DIAMOND
Shape and Cutting Style	ROUND BRILLIANT
Measurements	9.27 - 9.35 X 5.63 MM

GRADING RESULTS

Carat Weight	3.02 CARATS
Color Grade	I
Clarity Grade	VS 1
Cut Grade	IDEAL



ADDITIONAL GRADING INFORMATION

Polish	EXCELLENT
Symmetry	EXCELLENT
Fluorescence	NONE
Inscription(s)	(15) LG620454936

Comments: This Laboratory Grown Diamond was created by Chemical Vapor Deposition (CVD) growth process and may include post-growth treatment.
Type IIa



IG

February 10, 2024	GI Report No LG202454936	ROUND BRILLIANT	3.02 CARATS	VS 1	IDEAL	60.5%	55%	Medium to Slightly Thick (Faceted)	Pointed	EXCELLENT	EXCELLENT	NONE	lgf LG202454936	Comments: This Very Crown Diamond was treated by Chemical Vapor Deposition (CVD) growth process and may include post-growth treatment.
			9.27 - 9.35 X 5.63 MM	Color Grade	Clarity Grade	Cut Grade	Depth	Girdle	Culet	Polish	Symmetry	Fluorescence	Inscriptions(s)	Type IIA