



ELECTRONIC COPY

LABORATORY GROWN DIAMOND REPORT

February 9, 2024	
IGI Report Number	LG620459451
Description	LABORATORY GROWN DIAMOND
Shape and Cutting Style	ROUND BRILLIANT
Measurements	7.11 - 7.14 X 4.34 MM

GRADING RESULTS

Carat Weight	1.36 CARAT
Color Grade	D
Clarity Grade	VVS 2
Cut Grade	IDEAL

ADDITIONAL GRADING INFORMATION

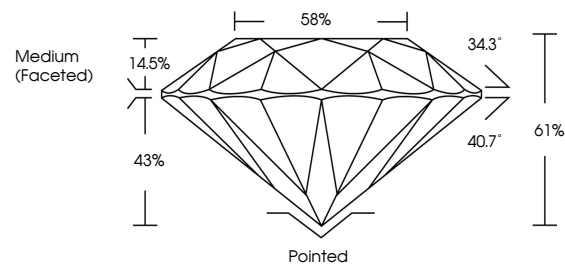
Polish	EXCELLENT
Symmetry	EXCELLENT
Fluorescence	NONE
Inscription(s)	15 LG620459451

Comments: As Grown - No indication of post-growth treatment.
This Laboratory Grown Diamond was created by High Pressure High Temperature (HPHT) growth process.
Type II

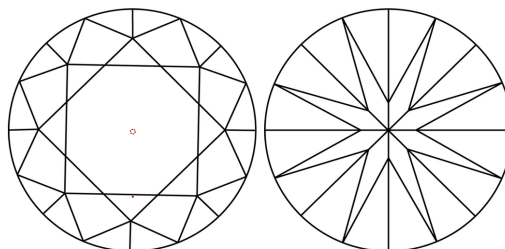
LABORATORY GROWN DIAMOND REPORT

LG620459451
Report verification at igi.org

PROPORTIONS



CLARITY CHARACTERISTICS



KEY TO SYMBOLS

Red symbols indicate internal characteristics.
Green symbols indicate external characteristics.

LABORATORY GROWN
DIAMOND REPORT

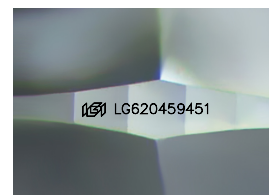
GRADING SCALES

CLARITY

IF	VVS ¹⁻²	VS ¹⁻²	SI ¹⁻²	I ¹⁻³
Internally Flawless	Very Very Slightly Included	Very Slightly Included	Slightly Included	Included

COLOR

D E F G H I J Faint Very Light Light



Sample Image Used



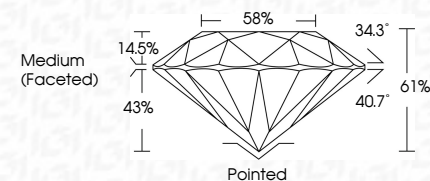
© IGI 2020, International Gemological Institute

FD - 10 20

LABORATORY GROWN DIAMOND REPORT

February 9, 2024	
IGI Report Number	LG620459451
Description	LABORATORY GROWN DIAMOND
Shape and Cutting Style	ROUND BRILLIANT
Measurements	7.11 - 7.14 X 4.34 MM

GRADING RESULTS	
Carat Weight	1.36 CARAT
Color Grade	D
Clarity Grade	VVS 2
Cut Grade	IDEAL



ADDITIONAL GRADING INFORMATION

Polish	EXCELLENT
Symmetry	EXCELLENT
Fluorescence	NONE
Inscription(s)	 LG620459451
Comments: As Grown - No indication of post-growth treatment.	
This Laboratory Grown Diamond was created by High Pressure High Temperature (HPHT) growth process.	
Type II	



IG

February 9, 2024	GI Report No LG520459451
ROUND BRILLIANT	
1.11 - 1.14 X 4.34 MM	
Carat Weight	1.36 CARAT
Color Grade	D
Clarity Grade	VVS2
Cut Grade	IDEAL
Table	61%
Girdle	59%
	Medium Faceted
Culet	Pointed
Polish	EXCELLENT
Symmetry	EXCELLENT
Fluorescence	NONE
Inscriptions(s)	4891 LG520459451
Comments:	None - No indication of post-growth treatment.
	This Laboratory Growth Diamond was created by High Pressure High Temperature (HPHT) growth process.
	Type II