



ELECTRONIC COPY

LABORATORY GROWN DIAMOND REPORT

February 10, 2024	
IGI Report Number	LG621401309
Description	LABORATORY GROWN DIAMOND
Shape and Cutting Style	ROUND BRILLIANT
Measurements	10.02 - 10.06 X 6.13 MM

GRADING RESULTS

Carat Weight	3.79 CARATS
Color Grade	F
Clarity Grade	VS 2
Cut Grade	IDEAL

ADDITIONAL GRADING INFORMATION

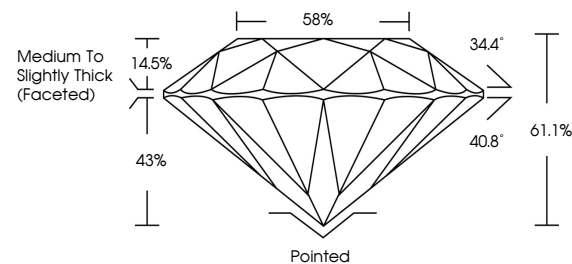
Polish	EXCELLENT
Symmetry	EXCELLENT
Fluorescence	NONE
Inscription(s)	 LG621401309

Comments: This Laboratory Grown Diamond was created by Chemical Vapor Deposition (CVD) growth process and may include post-growth treatment.
Type IIa

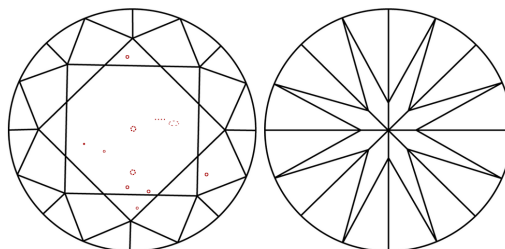
LABORATORY GROWN DIAMOND REPORT

LG621401309
Report verification at lgi.org

PROPORTIONS



CLARITY CHARACTERISTICS



KEY TO SYMBOLS

Red symbols indicate internal characteristics.
Green symbols indicate external characteristics.

LABORATORY GROWN
DIAMOND REPORT

GRADING SCALES

CLARITY

IF	VVS ¹⁻²	VS ¹⁻²	SI ¹⁻²	I ¹⁻³
Internally Flawless	Very Very Slightly Included	Very Slightly Included	Slightly Included	Included

COLOR

D E F G H I J Faint Very Light Light



Sample Image Used



© IGI 2020, International Gemological Institute

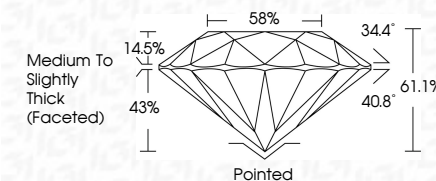
FD - 10 20

LABORATORY GROWN DIAMOND REPORT

February 10, 2024	
IGI Report Number	LG621401309
Description	LABORATORY GROWN DIAMOND
Shape and Cutting Style	ROUND BRILLIANT
Measurements	10.02 - 10.06 X 6.13 MM

GRADING RESULTS

Carat Weight	3.79 CARATS
Color Grade	F
Clarity Grade	VS 2
Cut Grade	IDEAL



ADDITIONAL GRADING INFORMATION

Polish	EXCELLENT
Symmetry	EXCELLENT
Fluorescence	NONE
Inscription(s)	(15) LG621401309

Comments: This Laboratory Grown Diamond was created by Chemical Vapor Deposition (CVD) growth process and may include post-growth treatment.
Type IIa



February 10, 2024	3.79 CARATS	VS 2	Polished
GI Report No. LG621401309	F	IDEAL	EXCELLENT
ROUND BRILLIANT		611%	NONE
		89%	#691 LG621401309
10.02 - 10.06 X 4.13 MM		Medium to Slightly Thick (Faceted)	
Carat Weight	Color Grade	Clarity Grade	Cut Grade
		Depth	Table
		Girdle	Crown
			Fluorescence
			Inscriptions(s)
			Comments:
			Created by Chemex Diamond was treated by Chemical Vapor Deposition (CVD) growth process and may include post-growth treatment.
			Type IIA