



ELECTRONIC COPY

LABORATORY GROWN DIAMOND REPORT

March 5, 2024	
IGI Report Number	LG621486071
Description	LABORATORY GROWN DIAMOND
Shape and Cutting Style	ROUND BRILLIANT
Measurements	7.01 - 7.04 X 4.27 MM

GRADING RESULTS

Carat Weight	1.29 CARAT
Color Grade	E
Clarity Grade	VS 1
Cut Grade	IDEAL

ADDITIONAL GRADING INFORMATION

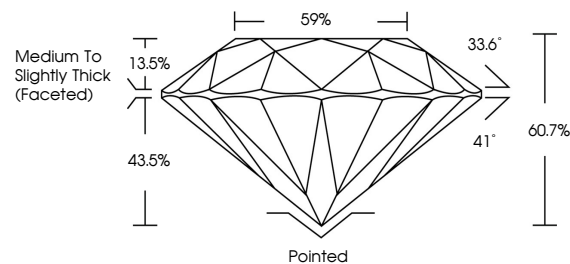
Polish	EXCELLENT
Symmetry	EXCELLENT
Fluorescence	NONE
Inscription(s)	15 LG621486071

Comments: This Laboratory Grown Diamond was created by Chemical Vapor Deposition (CVD) growth process and may include post-growth treatment.
Type IIa

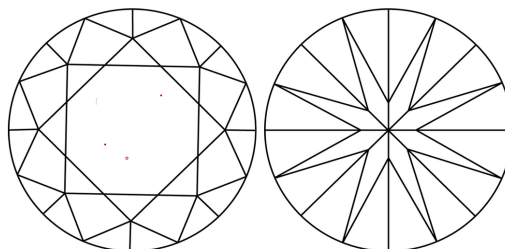
LABORATORY GROWN DIAMOND REPORT

LG621486071
Report verification at igi.org

PROPORTIONS



CLARITY CHARACTERISTICS



KEY TO SYMBOLS

Red symbols indicate internal characteristics.
Green symbols indicate external characteristics.

LABORATORY GROWN
DIAMOND REPORT

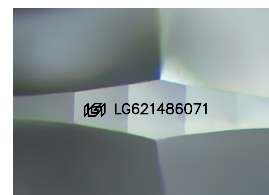
GRADING SCALES

CLARITY

IF	VVS ¹⁻²	VS ¹⁻²	SI ¹⁻²	I ¹⁻³
Internally Flawless	Very Very Slightly Included	Very Slightly Included	Slightly Included	Included

COLOR

D E F G H I J Faint Very Light Light



Sample Image Used



© IGI 2020, International Gemological Institute

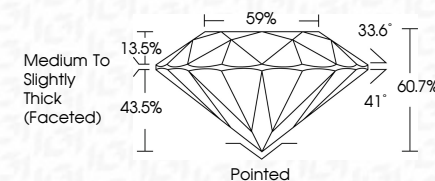
FD - 10 20

www.igi.org

LABORATORY GROWN DIAMOND REPORT

March 5, 2024	
IGI Report Number	LG621486071
Description	LABORATORY GROWN DIAMOND
Shape and Cutting Style	ROUND BRILLIANT
Measurements	7.01 - 7.04 X 4.27 MM

Carat Weight	1.29 CARAT
Color Grade	E
Clarity Grade	VS 1
Cut Grade	IDEAL



ADDITIONAL GRADING INFORMATION

Polish	EXCELLENT
Symmetry	EXCELLENT
Fluorescence	NONE
Inscription(s)	 LG621486071

Comments: This Laboratory Grown Diamond was created by Chemical Vapor Deposition (CVD) growth process and may include post-growth treatment.
Type IIa



IG

March 5, 2024	GI growth No L6521 486071	1.20 CARAT	Vs 1	Ported	None	169 L6521 486071
ROUND BRILLIANT			IDEAL	EXCELLENT		
			60.7%	EXCELLENT		
			59%	EXCELLENT		
			Medium to Slightly Thick (faced)			
7.01 - 7.04 X 4.27 MM						
Corat Weight						
Color Grade						
Clarity Grade						
Cut Grade						
Depth						
Table						
Girdle						
Quiet						
Polish						
Symmetry						
Fluorescence						
Inscription(s)						

Comments:
 1. Crown Diamond was created by Chemical Vapor Deposition (CVD) growth process and may include post-growth treatment.
 Type IIA