



ELECTRONIC COPY

LABORATORY GROWN DIAMOND REPORT

February 21, 2024	
IGI Report Number	LG622486383
Description	LABORATORY GROWN DIAMOND
Shape and Cutting Style	ROUND BRILLIANT
Measurements	10.89 - 10.96 X 6.55 MM

GRADING RESULTS

Carat Weight	4.78 CARATS
Color Grade	G
Clarity Grade	VVS 2
Cut Grade	IDEAL

ADDITIONAL GRADING INFORMATION

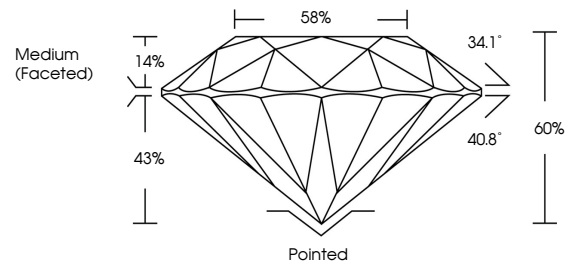
Polish	EXCELLENT
Symmetry	EXCELLENT
Fluorescence	NONE
Inscription(s)	15 LG622486383

Comments: This Laboratory Grown Diamond was created by Chemical Vapor Deposition (CVD) growth process and may include post-growth treatment.
Type IIa

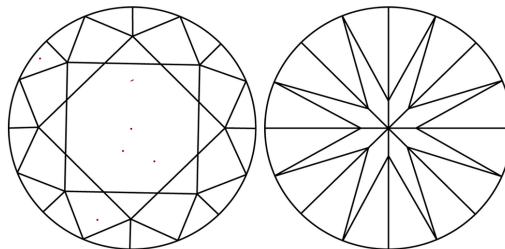
LABORATORY GROWN DIAMOND REPORT

LG622486383
Report verification at igi.org

PROPORTIONS



CLARITY CHARACTERISTICS



KEY TO SYMBOLS

Red symbols indicate internal characteristics.
Green symbols indicate external characteristics.

LABORATORY GROWN
DIAMOND REPORT

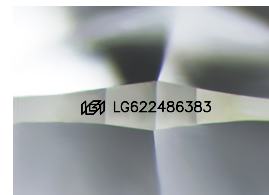
GRADING SCALES

CLARITY

IF	VVS ¹⁻²	VS ¹⁻²	SI ¹⁻²	I ¹⁻³
Internally Flawless	Very Very Slightly Included	Very Slightly Included	Slightly Included	Included

COLOR

D E F G H I J Faint Very Light Light



Sample Image Used



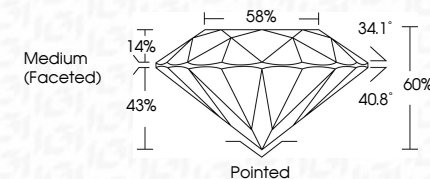
© IGI 2020, International Gemological Institute

FD - 10 20


LABORATORY GROWN DIAMOND REPORT

February 21, 2024	
IGI Report Number	LG622486383
Description	LABORATORY GROWN DIAMOND
Shape and Cutting Style	ROUND BRILLIANT
Measurements	10.89 - 10.96 X 6.55 MM

GRADING RESULTS	
Carat Weight	4.78 CARATS
Color Grade	G
Clarity Grade	VVS 2
Cut Grade	IDEAL



ADDITIONAL GRADING INFORMATION

Polish	EXCELLENT
Symmetry	EXCELLENT
Fluorescence	NONE
Inscription(s)	 LG622486383
<p>Comments: This Laboratory Grown Diamond was created by Chemical Vapor Deposition (CVD) growth process and may include post-growth treatment.</p> <p>Type IIa</p>	



IG

February 21, 2024	G Report No LG202404383	
ROUND BRILLIANT	10.09 - 10.96 X 6.55 MM	4.78 CARATS
Color Grade	Clarity Grade	VVS 2
Cut Grade	Our Grade	IDEAL
Depth	Table	60%
Girdle		55%
		Medium Faceted
Culet	Pointed	
Polish	EXCELLENT	
Symmetry	EXCELLENT	
Fluorescence	NONE	
Inscriptions(s)	461 LG202404383	
<p>Comments:</p> <p>This is a Fancy Crown Diamond was treated by Chemical Vapor Deposition (CVD) growth process and may include post-growth treatment.</p> <p>Type IIA</p>		

www.igi.org