



ELECTRONIC COPY

LABORATORY GROWN DIAMOND REPORT

February 21, 2024	
IGI Report Number	LG623408892
Description	LABORATORY GROWN DIAMOND
Shape and Cutting Style	ROUND BRILLIANT
Measurements	8.71 - 8.75 X 5.19 MM

GRADING RESULTS

Carat Weight	2.42 CARATS
Color Grade	F
Clarity Grade	VS 1
Cut Grade	EXCELLENT

ADDITIONAL GRADING INFORMATION

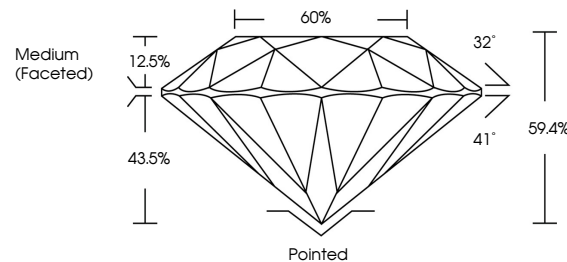
Polish	EXCELLENT
Symmetry	EXCELLENT
Fluorescence	NONE
Inscription(s)	15 LG623408892

Comments: This Laboratory Grown Diamond was created by Chemical Vapor Deposition (CVD) growth process and may include post-growth treatment.
Type IIa

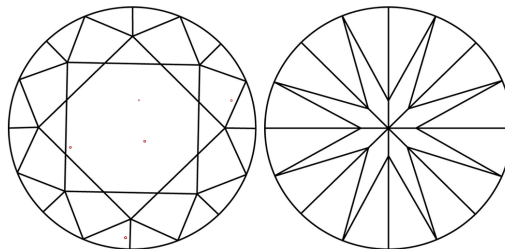
LABORATORY GROWN DIAMOND REPORT

LG623408892
Report verification at igi.org

PROPORTIONS



CLARITY CHARACTERISTICS



KEY TO SYMBOLS

Red symbols indicate internal characteristics.
Green symbols indicate external characteristics.

LABORATORY GROWN
DIAMOND REPORT

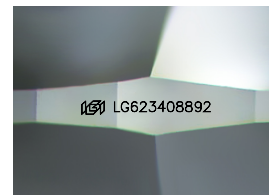
GRADING SCALES

CLARITY

IF	VVS ¹⁻²	VS ¹⁻²	SI ¹⁻²	I ¹⁻³
Internally Flawless	Very Very Slightly Included	Very Slightly Included	Slightly Included	Included

COLOR

D E F G H I J Faint Very Light Light



Sample Image Used

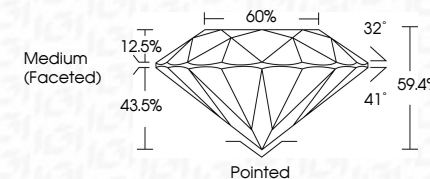


© IGI 2020, International Gemological Institute

FD - 10 20



February 21, 2024	
IGI Report Number	LG623408892
Description	LABORATORY GROWN DIAMOND
Shape and Cutting Style	ROUND BRILLIANT
Measurements	8.71 - 8.75 X 5.19 MM
GRADING RESULTS	
Carat Weight	2.42 CARATS
Color Grade	F
Clarity Grade	VS 1
Cut Grade	EXCELLENT



ADDITIONAL GRADING INFORMATION

Polish	EXCELLENT
Symmetry	EXCELLENT
Fluorescence	NONE
Inscription(s)	 LG-623408892

Comments: This Laboratory Grown Diamond was created by Chemical Vapor Deposition (CVD) growth process and may include post-growth treatment.
Type IIa

February 21, 2024	VS 1	242 CABATS
GI Report No 1502340892	EXCELLENT	EXCELLENT
ROUND BRILLANT	60%	NONE
1.71 - 6.75 X 5.19 MM	Medium (Faceted)	161 1502340892
Carat Weight		
Color Grade	Clarity Grade	Polish
Cut Grade	Cut Grade	Symmetry
	Table	Fluorescence
	Girdle	Inscriptions(s)
		Pointed
		EXCELLENT
		EXCELLENT
		NONE

Comments:
 This is a Natural, Colorless, Round, Diamond was
 treated by Chemical Vapor Deposition
 (CVD) growth process and may include
 post-growth treatment.
 Type IIA