

ELECTRONIC COPY

LABORATORY GROWN DIAMOND REPORT

March 8, 2024	
IGI Report Number	LG624416259
Description	LABORATORY GROWN DIAMOND
Shape and Cutting Style	ROUND BRILLIANT
Measurements	10.26 - 10.30 X 6.18 MM

GRADING RESULTS

Carat Weight	4.04 CARATS
Color Grade	G
Clarity Grade	VS 1
Cut Grade	IDEAL

ADDITIONAL GRADING INFORMATION

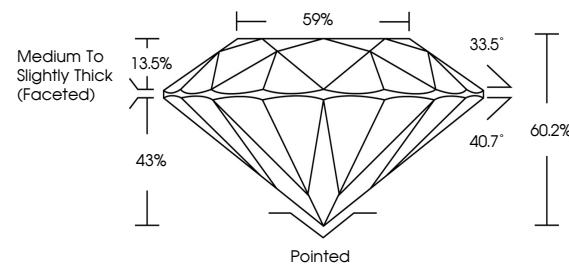
Polish	EXCELLENT
Symmetry	EXCELLENT
Fluorescence	NONE
Inscription(s)	15 LG624416259

Comments: This Laboratory Grown Diamond was created by Chemical Vapor Deposition (CVD) growth process and may include post-growth treatment.
Type IIa

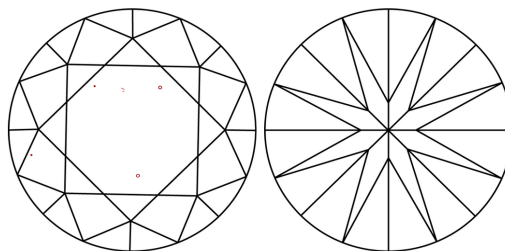
LABORATORY GROWN DIAMOND REPORT

LG624416259
Report verification at igi.org

PROPORTIONS



CLARITY CHARACTERISTICS



KEY TO SYMBOLS

Red symbols indicate internal characteristics.
Green symbols indicate external characteristics.

LABORATORY GROWN
DIAMOND REPORT

GRADING SCALES

CLARITY

IF	VVS ¹⁻²	VS ¹⁻²	SI ¹⁻²	I ¹⁻³
Internally Flawless	Very Very Slightly Included	Very Slightly Included	Slightly Included	Included

COLOR

D E F G H I J Faint Very Light Light



Sample Image Used



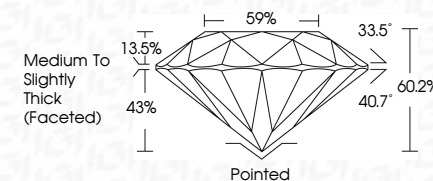
© IGI 2020, International Gemological Institute

FD - 10 20

LABORATORY GROWN DIAMOND REPORT

March 8, 2024	
IGI Report Number	LG6244-16259
Description	LABORATORY GROWN DIAMOND
Shape and Cutting Style	ROUND BRILLIANT
Measurements	10.26 - 10.30 X 6.18 MM

GRADING RESULTS	
Carat Weight	4.04 CARATS
Color Grade	G
Clarity Grade	VS 1
Cut Grade	IDEAL



ADDITIONAL GRADING INFORMATION

Polish	EXCELLENT
Symmetry	EXCELLENT
Fluorescence	NONE
Inscription(s)	LG5 LG624416255
<p>Comments: This Laboratory Grown Diamond was created by Chemical Vapor Deposition (CVD) growth process and may include post-growth treatment.</p> <p>Type IIa</p>	



March 8, 2024	GJ Report No. LG62441.0259	
ROUND BRILLIANT		
10.26 - 10.30 X 6.18 MM		
Carat Weight		
Color Grade	VS 1	4.04 CARATS
Cut Grade	IDEAL	
Depth	60.2%	
Table	59%	
Girdle	Medium to Slightly Thick (Faceted)	
Culet	Painted	
Polish	EXCELLENT	
Symmetry	EXCELLENT	
Fluorescence	NONE	
Inscriptions(s)	#61 LG62441.0259	
Comments:	Created by Chemex Diamond was treated by Chemical Vapor Deposition (CVD) growth process and may include post-growth treatment.	
Type IIA		