



ELECTRONIC COPY

LABORATORY GROWN DIAMOND REPORT

March 6, 2024	
IGI Report Number	LG624437321
Description	LABORATORY GROWN DIAMOND
Shape and Cutting Style	ROUND BRILLIANT
Measurements	10.79 - 10.82 X 6.52 MM

GRADING RESULTS

Carat Weight	4.71 CARATS
Color Grade	H
Clarity Grade	VS 1
Cut Grade	IDEAL

ADDITIONAL GRADING INFORMATION

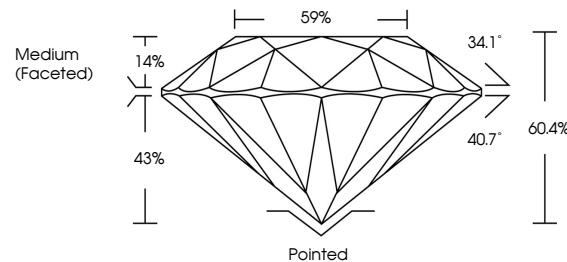
Polish	EXCELLENT
Symmetry	EXCELLENT
Fluorescence	NONE
Inscription(s)	15 LG624437321

Comments: This Laboratory Grown Diamond was created by Chemical Vapor Deposition (CVD) growth process and may include post-growth treatment.
Type IIa

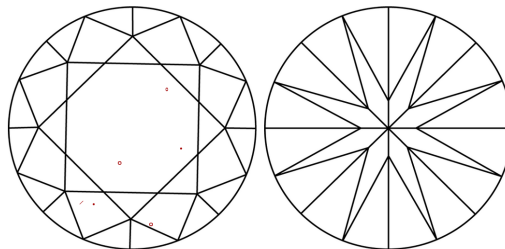
LABORATORY GROWN DIAMOND REPORT

LG624437321
Report verification at igi.org

PROPORTIONS



CLARITY CHARACTERISTICS



KEY TO SYMBOLS

Red symbols indicate internal characteristics.
Green symbols indicate external characteristics.

LABORATORY GROWN
DIAMOND REPORT

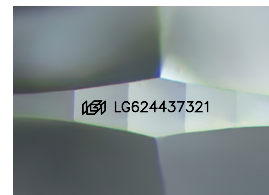
GRADING SCALES

CLARITY

IF	VVS ¹⁻²	VS ¹⁻²	SI ¹⁻²	I ¹⁻³
Internally Flawless	Very Very Slightly Included	Very Slightly Included	Slightly Included	Included

COLOR

D E F G H I J Faint Very Light Light



Sample Image Used



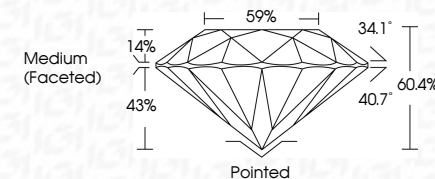
© IGI 2020, International Gemological Institute

FD - 10 20

LABORATORY GROWN DIAMOND REPORT

March 6, 2024	
IGI Report Number	LG624437321
Description	LABORATORY GROWN DIAMOND
Shape and Cutting Style	ROUND BRILLIANT
Measurements	10.79 - 10.82 X 6.52 MM

GRADING RESULTS	
Carat Weight	4.71 CARATS
Color Grade	H
Clarity Grade	VS 1
Cut Grade	IDEAL



ADDITIONAL GRADING INFORMATION

Polish	EXCELLENT
Symmetry	EXCELLENT
Fluorescence	NONE
Inscription(s)	15 LG 624437321

Comments: This Laboratory Grown Diamond was created by Chemical Vapor Deposition (CVD) growth process and may include post-growth treatment.
Type IIa



March 6, 2024	GI Report No LG24437321	4.71 CARATS	VSI 1	Ported	NONE	(#) LG24437321
SOUND BRILLIANT	10.79 - 10.82 X 6.52 MM	H	IDEAL	EXCELLENT	EXCELLENT	
	Color Weight		60.4%			
	Color Grade		59%			
	Clarity Grade		Medium (Focaled)			
	Cut Grade					
	Depth					
	Girdle					
				Quiet	Polish	
					Symmetry	
					Fluorescence	
					Inscription(s)	

Comments: Crown Diamond was created by Chemical Vapor Deposition (CVD) growth process and may include post-growth treatment.

Type IIA