



ELECTRONIC COPY

LABORATORY GROWN DIAMOND REPORT

| | |
|-------------------------|-----------------------------|
| April 2, 2024 | |
| IGI Report Number | LG625471721 |
| Description | LABORATORY GROWN DIAMOND |
| Shape and Cutting Style | ROUND BRILLIANT |
| Measurements | 9.09 - 9.14 X 5.59 MM |

GRADING RESULTS

| | |
|---------------|---------------------|
| Carat Weight | 2.86 CARATS |
| Color Grade | F |
| Clarity Grade | INTERNALLY FLAWLESS |
| Cut Grade | IDEAL |

ADDITIONAL GRADING INFORMATION

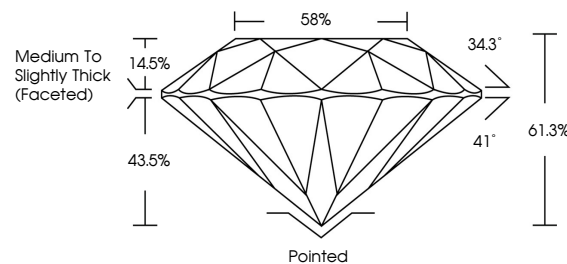
| | |
|----------------|----------------|
| Polish | EXCELLENT |
| Symmetry | EXCELLENT |
| Fluorescence | NONE |
| Inscription(s) | 15 LG625471721 |

Comments: HEARTS & ARROWS
As Grown - No indication of post-growth treatment.
This Laboratory Grown Diamond was created by High
Pressure High Temperature (HPHT) growth process.
Type II

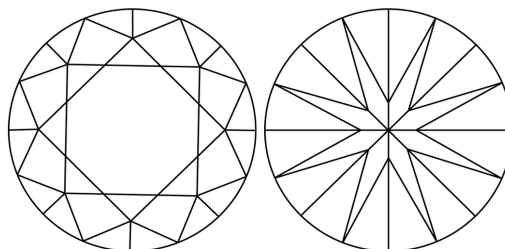
LABORATORY GROWN DIAMOND REPORT

LG625471721
Report verification at lgi.org

PROPORTIONS

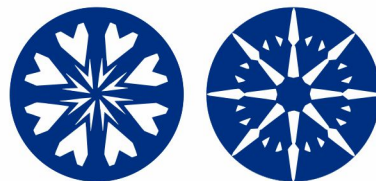


CLARITY CHARACTERISTICS



KEY TO SYMBOLS

Red symbols indicate internal characteristics.
Green symbols indicate external characteristics.



www.igi.org

LABORATORY GROWN
DIAMOND REPORT

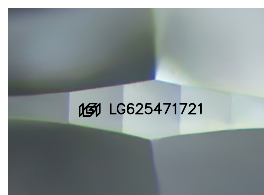
GRADING SCALES

CLARITY

| IF | VVS ¹⁻² | VS ¹⁻² | SI ¹⁻² | I ¹⁻³ |
|---------------------|-----------------------------|------------------------|-------------------|------------------|
| Internally Flawless | Very Very Slightly Included | Very Slightly Included | Slightly Included | Included |

COLOR

D E F G H I J Faint Very Light Light



Sample Image Used



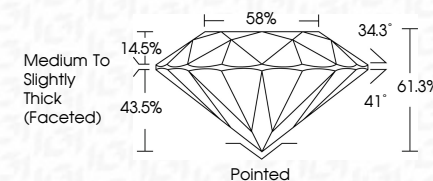
© IGI 2020, International Gemological Institute

FD - 10 20

THIS DOCUMENT WAS PRODUCED WITH THE FOLLOWING SECURITY MEASURES: SPECIAL DOCUMENT PAPER, INK SCREENS, WATERMARK, BACKGROUND DESIGNS, HOLOGRAM AND OTHER SECURITY FEATURES NOT LISTED AND DO EXCEED DOCUMENT SECURITY INDUSTRY GUIDELINES

LABORATORY GROWN DIAMOND REPORT

| | |
|-------------------------|-----------------------------|
| April 2, 2024 | |
| IGI Report Number | LG625471721 |
| Description | LABORATORY GROWN DIAMOND |
| Shape and Cutting Style | ROUND BRILLIANT |
| Measurements | 9.09 - 9.14 X 5.59 MM |
| GRADING RESULTS | |
| Carat Weight | 2.86 CARATS |
| Color Grade | F |
| Clarity Grade | INTERNALLY FLAWLESS |
| Cut Grade | IDEAL |



ADDITIONAL GRADING INFORMATION

| | |
|--|----------------------------|
| Polish | EXCELLENT |
| Symmetry | EXCELLENT |
| Fluorescence | NONE |
| Inscription(s) | (G) LG625471721 |
| Comments: HEARTS & ARROWS | |
| As Grown - No indication of post-growth treatment. | |
| This Laboratory Grown Diamond was created by High Pressure High Temperature (HPHT) growth process. | |
| Type II | |



April 2, 2024
 GJ Report No LG625471721

| | | | | | | | | | | | | |
|-----------------|-----------------------|-------------|--------------|-------------|-----------|-------|-------|--------|------------------------------------|----------|-----------|------|
| ROUND BRILLIANT | 0.09 - 0.14 X 5.99 MM | 2.86 CARATS | Color | Clarity | Cut | Depth | Table | Girdle | Medium To Slightly Thick (Faceted) | Polished | EXCELLENT | NONE |
| | | | Carat Weight | Color Grade | Cut Grade | Depth | Table | Girdle | | | | |
| | | | F | IF | IDEAL | 61.5% | 58% | | | | | |

Comments:
HEARTS & ARROWS
As Grown - No indication of post-growth treatment.
This Laboratory Grown Diamond was created by High Pressure High temperature (HPHT) growth process.