

ELECTRONIC COPY

LABORATORY GROWN DIAMOND REPORT

March 19, 2024	
IGI Report Number	LG626495194
Description	LABORATORY GROWN DIAMOND
Shape and Cutting Style	ROUND BRILLIANT
Measurements	9.32 - 9.39 X 5.70 MM

GRADING RESULTS

Carat Weight	3.08 CARATS
Color Grade	H
Clarity Grade	VS 2
Cut Grade	IDEAL

ADDITIONAL GRADING INFORMATION

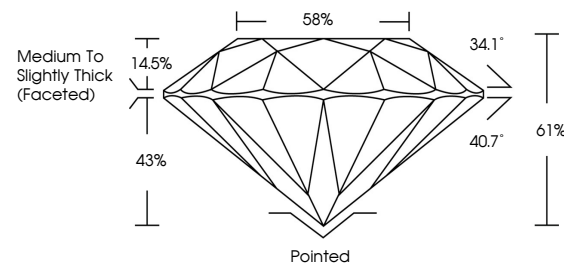
Polish	EXCELLENT
Symmetry	EXCELLENT
Fluorescence	NONE
Inscription(s)	13 LG626495194

Comments: This Laboratory Grown Diamond was created by Chemical Vapor Deposition (CVD) growth process and may include post-growth treatment.
Type IIa

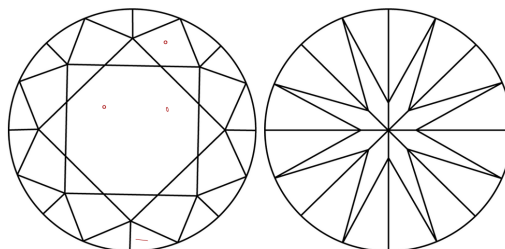
LABORATORY GROWN DIAMOND REPORT

LG626495194
Report verification at lgi.org

PROPORTIONS



CLARITY CHARACTERISTICS



KEY TO SYMBOLS

Red symbols indicate internal characteristics.
Green symbols indicate external characteristics.

LABORATORY GROWN
DIAMOND REPORT

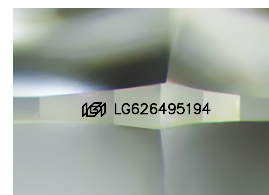
GRADING SCALES

CLARITY

IF	VVS ¹⁻²	VS ¹⁻²	SI ¹⁻²	I ¹⁻³
Internally Flawless	Very Very Slightly Included	Very Slightly Included	Slightly Included	Included

COLOR

D E F G H I J Faint Very Light Light



Sample Image Used

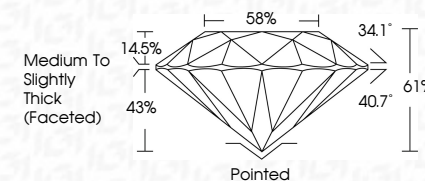


© IGI 2020, International Gemological Institute

FD - 10 20



March 19, 2024	
IGI Report Number	LG626495194
Description	LABORATORY GROWN DIAMOND
Shape and Cutting Style	ROUND BRILLIANT
Measurements	9.32 - 9.39 X 5.70 MM
GRADING RESULTS	
Carat Weight	3.08 CARATS
Color Grade	H
Clarity Grade	VS 2
Cut Grade	IDEAL



ADDITIONAL GRADING INFORMATION

Polish	EXCELLENT
Symmetry	EXCELLENT
Fluorescence	NONE
Inscription(s)	修 LG626495194
Comments: This Laboratory Grown Diamond was created by Chemical Vapor Deposition (CVD) growth process and may include post-growth treatment.	
Type Ila	

March 19, 2024	GI Report No LG526495194	3.08 CARATS	H
32-32 - 9.97 X 5.70 MM	Color Weight	VS 2	Polished
Color Grade	Cut Grade	IDEAL	EXCELLENT
Clarity Grade	Depth	61%	EXCELLENT
Table	Girdle	58%	NONE
		Medium to slightly thick faceted	ISS LG526495194
	Notes:		
	Comments:		
	This Laboratory Grown Diamond was created by Chemical Vapor Deposition (CVD) growth process and may include some growth treatment.		

Comments:
This Laboratory Grown Diamond was created by Chemical Vapor Deposition (CVD) growth process and may include post-growth treatment.