



ELECTRONIC COPY

LABORATORY GROWN DIAMOND REPORT

March 28, 2024	
IGI Report Number	LG627403953
Description	LABORATORY GROWN DIAMOND
Shape and Cutting Style	ROUND BRILLIANT
Measurements	9.28 - 9.30 X 5.69 MM

GRADING RESULTS

Carat Weight	3.05 CARATS
Color Grade	E
Clarity Grade	VVS 1
Cut Grade	IDEAL

ADDITIONAL GRADING INFORMATION

Polish	EXCELLENT
Symmetry	EXCELLENT
Fluorescence	NONE
Inscription(s)	 LG627403953

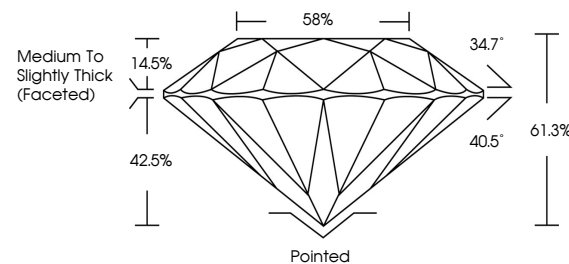
Comments: HEARTS & ARROWS
As Grown - No indication of post-growth treatment.
This Laboratory Grown Diamond was created by High
Pressure High Temperature (HPHT) growth process.
Type II

LABORATORY GROWN DIAMOND REPORT

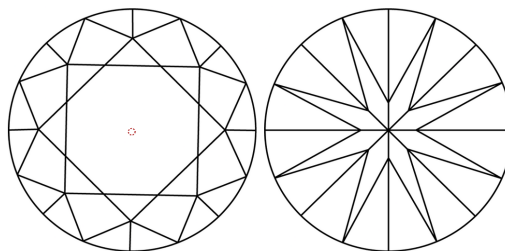
LG627403953

Report verification at igi.org

PROPORTIONS

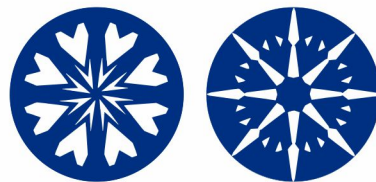


CLARITY CHARACTERISTICS



KEY TO SYMBOLS

Red symbols indicate internal characteristics.
Green symbols indicate external characteristics.



www.igi.org

LABORATORY GROWN
DIAMOND REPORT

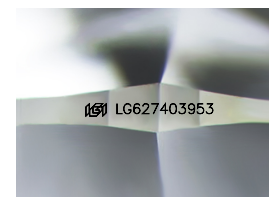
GRADING SCALES

CLARITY

IF	VVS ¹⁻²	VS ¹⁻²	SI ¹⁻²	I ¹⁻³
Internally Flawless	Very Very Slightly Included	Very Slightly Included	Slightly Included	Included

COLOR

D E F G H I J Faint Very Light Light



Sample Image Used



© IGI 2020, International Gemological Institute

FD - 10 20

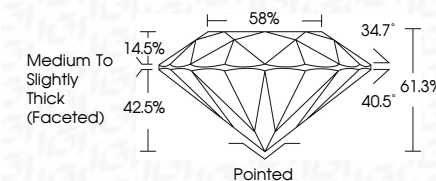
THIS DOCUMENT WAS PRODUCED WITH THE FOLLOWING SECURITY MEASURES: SPECIAL DOCUMENT PAPER, INK SCREENS, WATERMARK, BACKGROUND DESIGNS, HOLOGRAM AND OTHER SECURITY FEATURES NOT LISTED AND DO EXCEED DOCUMENT SECURITY INDUSTRY GUIDELINE

LABORATORY GROWN DIAMOND REPORT

March 28, 2024	
IGI Report Number	LG627403953
Description	LABORATORY GROWN DIAMOND
Shape and Cutting Style	ROUND BRILLIANT
Measurements	9.28 - 9.30 X 5.69 MM

GRADING RESULTS

Carat Weight	3.05 CARATS
Color Grade	E
Clarity Grade	VVS 1
Cut Grade	IDEAL



ADDITIONAL GRADING INFORMATION

Polish	EXCELLENT
Symmetry	EXCELLENT
Fluorescence	NONE
Inscription(s)	1151 LG627403953

Comments: HEARTS & ARROWS
As Grown - No indication of post-growth treatment.
This Laboratory Grown Diamond was created by High
Pressure High Temperature (HPHT) growth process.
Type II



March 28, 2024
IGI Report No. IG-627403953

IGL Report No LG527403963	
ROUND BRILLIANT	
9.28 - 9.30 X 5.69 MM	
Carat Weight	3.05 CARATS
Color Grade	E
Clarity Grade	VVS 1
Cut Grade	IDEAL
Depth	61.3%
Table	59%
Girdle	Medium to Slightly Thick (Faceted)
Culet	Polished
Polish	EXCELLENT
Symmetry	EXCELLENT
Fluorescence	NONE

Comments:
HEARTS & ARROWS
As Grown - No Indication of post-growth treatment.
This Laboratory Grown Diamond was credited by High Pressure High Temperature (HPHT) growth process.