

ELECTRONIC COPY

LABORATORY GROWN DIAMOND REPORT

March 30, 2024	
IGI Report Number	LG627481266
Description	LABORATORY GROWN DIAMOND
Shape and Cutting Style	ROUND BRILLIANT
Measurements	9.16 - 9.22 X 5.72 MM

GRADING RESULTS

Carat Weight	3.01 CARATS
Color Grade	H
Clarity Grade	VS 1
Cut Grade	IDEAL

ADDITIONAL GRADING INFORMATION

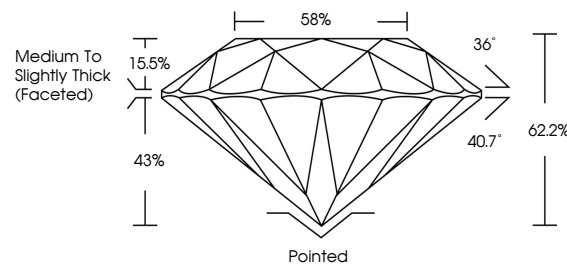
Polish	EXCELLENT
Symmetry	EXCELLENT
Fluorescence	NONE
Inscription(s)	15 LG627481266

Comments: This Laboratory Grown Diamond was created by Chemical Vapor Deposition (CVD) growth process and may include post-growth treatment.
Type IIa

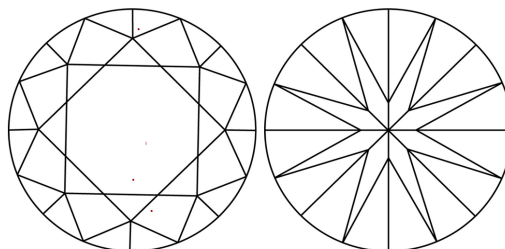
LABORATORY GROWN DIAMOND REPORT

LG627481266
Report verification at igi.org

PROPORTIONS



CLARITY CHARACTERISTICS



KEY TO SYMBOLS

Red symbols indicate internal characteristics.
Green symbols indicate external characteristics.

LABORATORY GROWN
DIAMOND REPORT

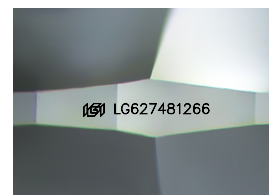
GRADING SCALES

CLARITY

IF	VVS ¹⁻²	VS ¹⁻²	SI ¹⁻²	I ¹⁻³
Internally Flawless	Very Very Slightly Included	Very Slightly Included	Slightly Included	Included

COLOR

D E F G H I J Faint Very Light Light



Sample Image Used



© IGI 2020, International Gemological Institute

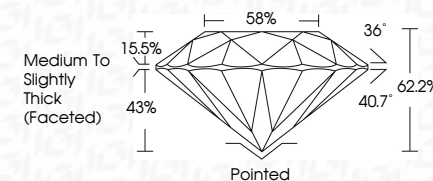
FD - 10 20

LABORATORY GROWN DIAMOND REPORT

March 30, 2024	
IGI Report Number	LG627481266
Description	LABORATORY GROWN DIAMOND
Shape and Cutting Style	ROUND BRILLIANT
Measurements	9.16 - 9.22 X 5.72 MM

GRADING RESULTS

Carat Weight	3.01 CARATS
Color Grade	H
Clarity Grade	VS 1
Cut Grade	IDEAL



ADDITIONAL GRADING INFORMATION

Polish	EXCELLENT
Symmetry	EXCELLENT
Fluorescence	NONE
Inscription(s)	(15) LG627481266

Comments: This Laboratory Grown Diamond was created by Chemical Vapor Deposition (CVD) growth process and may include post-growth treatment.
Type IIa



	March 30, 2024	Gf Report No L6827481266
	ROUND BRILLIANT	
	Dt 16 - DZ 2 X 5.72 MM	
	Carat Weight	
	Color Grade	VS 1
	Clarity Grade	IDEAL
	Cut Grade	62/2%
	Depth	89%
	Table	
	Girdle	Medium to Slightly Thick (Faceted)
	Culet	Poished
	Polish	EXCELLENT
	Symmetry	EXCELLENT
	Fluorescence	NONE
	Inscriptions(s)	#61 LG827481266
Comments:		
	Treated by Growth Diamond was created by Chemical Vapor Deposition (CVD) growth process and may include post-growth treatment.	
Type IIG		

Comments:
This Laboratory Grown Diamond was created by Chemical Vapor Deposition (CVD) growth process and may include post-growth treatment