



ELECTRONIC COPY

LABORATORY GROWN DIAMOND REPORT

April 9, 2024	
IGI Report Number	LG628404226
Description	LABORATORY GROWN DIAMOND
Shape and Cutting Style	ROUND BRILLIANT
Measurements	9.01 - 9.03 X 5.55 MM

GRADING RESULTS

Carat Weight	2.80 CARATS
Color Grade	H
Clarity Grade	VVS 2
Cut Grade	IDEAL

ADDITIONAL GRADING INFORMATION

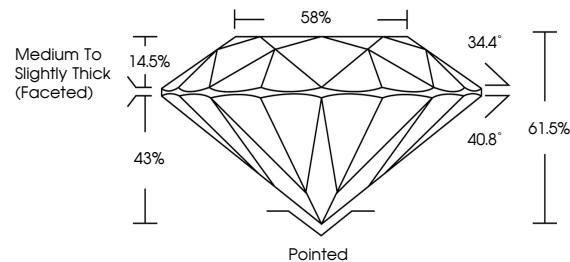
Polish	EXCELLENT
Symmetry	EXCELLENT
Fluorescence	NONE
Inscription(s)	15 LG628404226

Comments: This Laboratory Grown Diamond was created by Chemical Vapor Deposition (CVD) growth process and may include post-growth treatment. Type IIa

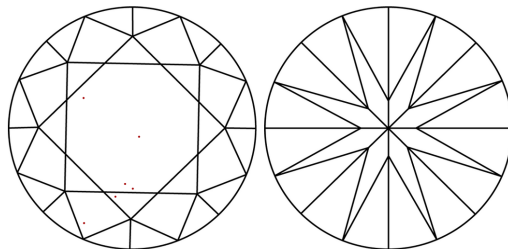
LABORATORY GROWN DIAMOND REPORT

LG628404226
Report verification at lgi.org

PROPORTIONS



CLARITY CHARACTERISTICS



KEY TO SYMBOLS

Red symbols indicate internal characteristics.
Green symbols indicate external characteristics.

LABORATORY GROWN
DIAMOND REPORT

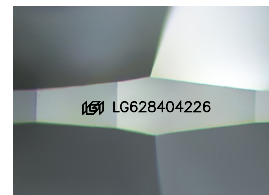
GRADING SCALES

CLARITY

IF	VVS ¹⁻²	VS ¹⁻²	SI ¹⁻²	I ¹⁻³
Internally Flawless	Very Very Slightly Included	Very Slightly Included	Slightly Included	Included

COLOR

D E F G H I J Faint Very Light Light



Sample Image Used



© IGI 2020, International Gemological Institute

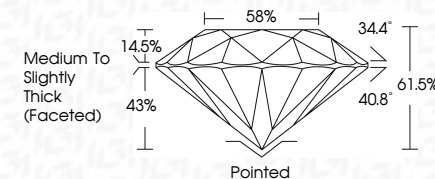
FD - 10 20

LABORATORY GROWN DIAMOND REPORT

April 9, 2024	
IGI Report Number	LG628404226
Description	LABORATORY GROWN DIAMOND
Shape and Cutting Style	ROUND BRILLIANT
Measurements	9.01 - 9.03 X 5.55 MM

GRADING RESULTS

Carat Weight	2.80 CARATS
Color Grade	H
Clarity Grade	VVS 2
Cut Grade	IDEAL



ADDITIONAL GRADING INFORMATION

Polish	EXCELLENT
Symmetry	EXCELLENT
Fluorescence	NONE
Inscription(s)	 LG628404226

Comments: This Laboratory Grown Diamond was created by Chemical Vapor Deposition (CVD) growth process and may include post-growth treatment.
Type IIa



IG

April 9, 2024	2.80 CARATS	VVS 2	Pointed
ROUND BRILLIANT		VVS 2	EXCELLENT
SI GROWN		IDEAL	EXCELLENT
1.01 - 1.03 X 5.65 MM		61.5%	NONE
Corat Weight		58%	gsm 1.62840226
Color Grade		Medium to slightly Thick (faceted)	
Clarity Grade			
CU Cut Grade			
Depth			
Table			
Girdle			
Culet			
Polish			
Symmetry			
Fluorescence			
Inscription(s)			

Comments: SI Grown Diamond was created by Chemical Vapor Deposition (CVD) growth process and may include post-growth treatment.

Type Ila