



**ELECTRONIC COPY**

## LABORATORY GROWN DIAMOND REPORT

April 6, 2024	
IGI Report Number	LG628424346
Description	LABORATORY GROWN DIAMOND
Shape and Cutting Style	ROUND BRILLIANT
Measurements	7.36 - 7.42 X 4.65 MM

## GRADING RESULTS

Carat Weight	1.59 CARAT
Color Grade	D
Clarity Grade	VS 1
Cut Grade	EXCELLENT

### ADDITIONAL GRADING INFORMATION

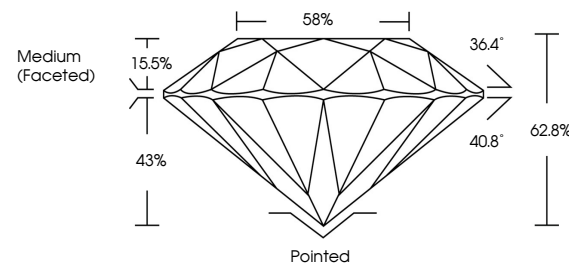
Polish	EXCELLENT
Symmetry	EXCELLENT
Fluorescence	NONE
Inscription(s)	15 LG628424346

Comments: As Grown - No indication of post-growth treatment.  
This Laboratory Grown Diamond was created by High Pressure High Temperature (HPHT) growth process.  
Type II

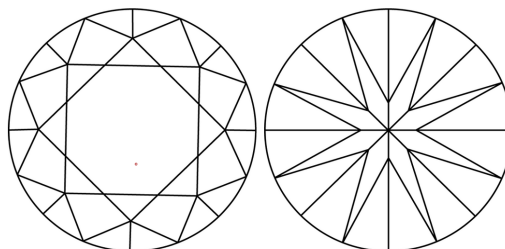
## LABORATORY GROWN DIAMOND REPORT

LG628424346  
Report verification at [igi.org](https://igi.org)

## PROPORTIONS



## CLARITY CHARACTERISTICS



## KEY TO SYMBOLS

Red symbols indicate internal characteristics.  
Green symbols indicate external characteristics.

LABORATORY GROWN  
DIAMOND REPORT

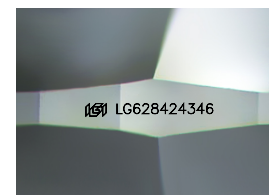
## GRADING SCALES

## CLARITY

IF	VVS <sup>1-2</sup>	VS <sup>1-2</sup>	SI <sup>1-2</sup>	I <sup>1-3</sup>
Internally Flawless	Very Very Slightly Included	Very Slightly Included	Slightly Included	Included

**COLOR**

D E F G H I J Faint Very Light Light



Sample Image Used

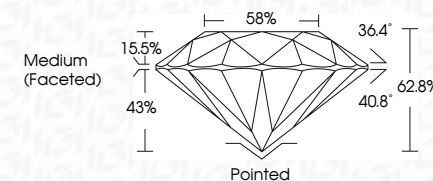


© IGI 2020, International Gemological Institute

FD - 10 20

## LABORATORY GROWN DIAMOND REPORT

April 6, 2024	
IGI Report Number	LG628424346
Description	LABORATORY GROWN DIAMOND
Shape and Cutting Style	ROUND BRILLIANT
Measurements	7.36 - 7.42 X 4.65 MM
<b>GRADING RESULTS</b>	
Carat Weight	1.59 CARAT
Color Grade	D
Clarity Grade	VS 1
Cut Grade	EXCELLENT



### ADDITIONAL GRADING INFORMATION

Polish	EXCELLENT
Symmetry	EXCELLENT
Fluorescence	NONE
Inscription(s)	<del>165</del> LG628424346
Comments: As Grown - No indication of post-growth treatment.	
This Laboratory Grown Diamond was created by High Pressure High Temperature (HPHT) growth process.	
Type II	



April 6, 2024	1.59 CARAT
G1 Report No. LG28240346	D
ROUND BRILLIANT	VS 1
	EXCELLENT
	62.8%
	58%
	Medium (Faceted)
	Painted
	EXCELLENT
	EXCELLENT
	NONE
	#61 LG52403846
Comments:	
	As Grown - No indication of post-growth treatment.
	Secondary Growth Diamond was created by High Pressure High temperature (HPHT) growth process.
	Type II