



ELECTRONIC COPY

LABORATORY GROWN DIAMOND REPORT

April 1, 2024	
IGI Report Number	LG628473531
Description	LABORATORY GROWN DIAMOND
Shape and Cutting Style	ROUND BRILLIANT
Measurements	7.22 - 7.27 X 4.51 MM

GRADING RESULTS

Carat Weight	1.45 CARAT
Color Grade	F
Clarity Grade	VVS 2
Cut Grade	IDEAL

ADDITIONAL GRADING INFORMATION

Polish	EXCELLENT
Symmetry	EXCELLENT
Fluorescence	NONE
Inscription(s)	 LG628473531

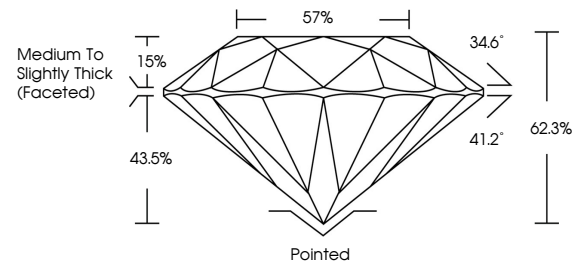
Comments: This Laboratory Grown Diamond was created by Chemical Vapor Deposition (CVD) growth process and may include post-growth treatment.
Type IIa

LABORATORY GROWN DIAMOND REPORT

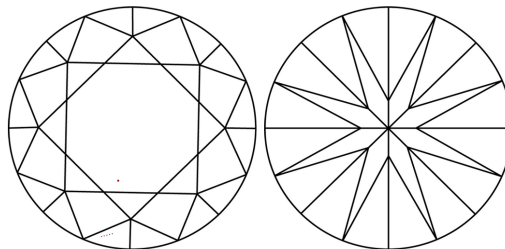
LG628473531

Report verification at igi.org

PROPORTIONS



CLARITY CHARACTERISTICS



KEY TO SYMBOLS

Red symbols indicate internal characteristics.
Green symbols indicate external characteristics.

LABORATORY GROWN
DIAMOND REPORT

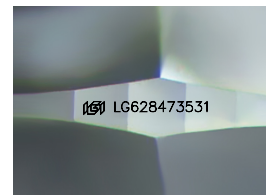
GRADING SCALES

CLARITY

IF	VVS ¹⁻²	VS ¹⁻²	SI ¹⁻²	I ¹⁻³
Internally Flawless	Very Very Slightly Included	Very Slightly Included	Slightly Included	Included

COLOR

D E F G H I J Faint Very Light Light



Sample Image Used



© IGI 2020, International Gemological Institute

FD - 10 20

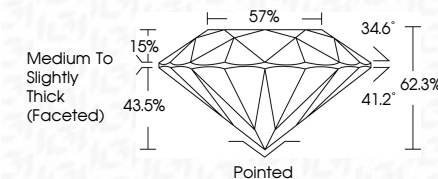
www.igi.org

LABORATORY GROWN DIAMOND REPORT

April 1, 2024	
IGI Report Number	LG628473531
Description	LABORATORY GROWN DIAMOND
Shape and Cutting Style	ROUND BRILLIANT
Measurements	7.22 - 7.27 X 4.51 MM

GRADING RESULTS

Carat Weight	1.45 CARAT
Color Grade	F
Clarity Grade	VVS 2
Cut Grade	IDEAL



ADDITIONAL GRADING INFORMATION

Polish	EXCELLENT
Symmetry	EXCELLENT
Fluorescence	NONE
Inscription(s)	151 LG-628473531

Comments: This Laboratory Grown Diamond was created by Chemical Vapor Deposition (CVD) growth process and may include post-growth treatment.
Type IIa



April 1, 2024	Report No. LG268473531	ROUND BRILLIANT	1.45 CARAT	F	VVS 2	IDEAL	62.3%	57%	Medium to Slightly Thick (Faceted)	Polished	EXCELLENT	NONE	lgf1 LG268473531
22 - 22 - 7.27 x 4.51 MM	Carat Weight	Color Grade	Clarity Grade	Cut Grade	Depth	Table	Girdle			Culet	Symmetry	Fluorescence	Inscriptions(s)
										Polish			

Comments:
 The Laboratory Grown Diamond was grown using a CVD growth process and may include post-growth treatment.
 Type IIA