



**ELECTRONIC COPY**

## LABORATORY GROWN DIAMOND REPORT

April 3, 2024	
IGI Report Number	LG628473697
Description	LABORATORY GROWN DIAMOND
Shape and Cutting Style	ROUND BRILLIANT
Measurements	7.30 - 7.33 X 4.35 MM

## GRADING RESULTS

Carat Weight	1.41 CARAT
Color Grade	E
Clarity Grade	VS 1
Cut Grade	IDEAL

### ADDITIONAL GRADING INFORMATION

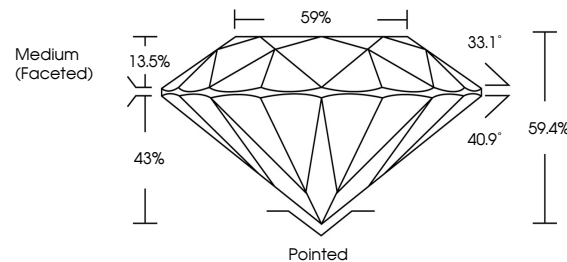
Polish	EXCELLENT
Symmetry	EXCELLENT
Fluorescence	NONE
Inscription(s)	15 LG628473697

Comments: This Laboratory Grown Diamond was created by Chemical Vapor Deposition (CVD) growth process and may include post-growth treatment.  
Type IIa

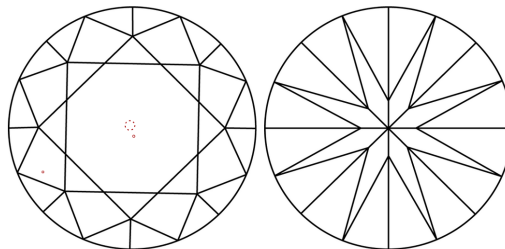
## LABORATORY GROWN DIAMOND REPORT

LG628473697  
Report verification at [igi.org](http://igi.org)

## PROPORTIONS



## CLARITY CHARACTERISTICS



## KEY TO SYMBOLS

Red symbols indicate internal characteristics.  
Green symbols indicate external characteristics.

LABORATORY GROWN  
DIAMOND REPORT

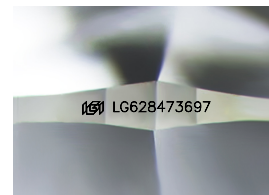
## GRADING SCALES

## CLARITY

IF	VVS <sup>1-2</sup>	VS <sup>1-2</sup>	SI <sup>1-2</sup>	I <sup>1-3</sup>
Internally Flawless	Very Very Slightly Included	Very Slightly Included	Slightly Included	Included

**COLOR**

D E F G H I J Faint Very Light Light



Sample Image Used



© IGI 2020, International Gemological Institute

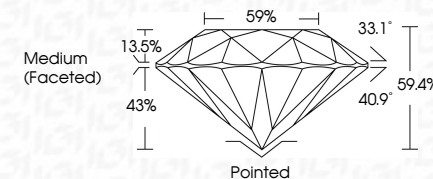
FD - 10 20

**www.igi.org**

## LABORATORY GROWN DIAMOND REPORT

April 3, 2024	
IGI Report Number	LG628473697
Description	LABORATORY GROWN DIAMOND
Shape and Cutting Style	ROUND BRILLIANT
Measurements	7.30 - 7.33 X 4.35 MM

GRADING RESULTS	
Carat Weight	1.41 CARAT
Color Grade	E
Clarity Grade	VS 1
Cut Grade	IDEAL



### ADDITIONAL GRADING INFORMATION

Polish	EXCELLENT
Symmetry	EXCELLENT
Fluorescence	NONE
Inscription(s)	15 LG 628473697

Comments: This Laboratory Grown Diamond was created by Chemical Vapor Deposition (CVD) growth process and may include post-growth treatment.  
Type IIa



IG

	April 3, 2024	
	GJ Report No LG2847697	
	ROUND BRILLIANT	
	3.30 - 3.33 X 4.35 MM	
	Carat Weight	E
	Color Grade	VS 1
	Clarity Grade	Ideal
	Cut Grade	59.4%
	Depth	59%
	Diameter	
	Girdle	Medium (Faceted)
	Fluorescence	Poiled
	Symmetry	Excellent
	Inscription(s)	NONE
		#GJLG2847697
	Comments:	
		This Crown Diamond was created by Chemical Vapor Deposition (CVD) growth process and may include post-growth treatment.
	Type IIA	