



**ELECTRONIC COPY**

## LABORATORY GROWN DIAMOND REPORT

April 4, 2024	
IGI Report Number	LG628492422
Description	LABORATORY GROWN DIAMOND
Shape and Cutting Style	ROUND BRILLIANT
Measurements	7.82 - 7.87 X 4.86 MM

## GRADING RESULTS

Carat Weight	1.85 CARAT
Color Grade	E
Clarity Grade	VS 1
Cut Grade	IDEAL

### ADDITIONAL GRADING INFORMATION

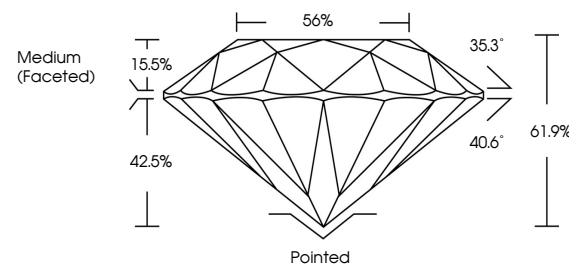
Polish	EXCELLENT
Symmetry	EXCELLENT
Fluorescence	NONE
Inscription(s)	 LG628492422

Comments: This Laboratory Grown Diamond was created by Chemical Vapor Deposition (CVD) growth process and may include post-growth treatment.  
Type IIa

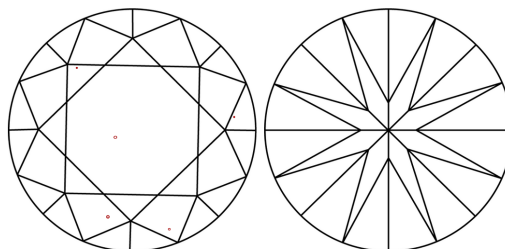
## LABORATORY GROWN DIAMOND REPORT

LG628492422  
Report verification at [igi.org](https://igi.org)

## PROPORTIONS



## CLARITY CHARACTERISTICS



## KEY TO SYMBOLS

Red symbols indicate internal characteristics.  
Green symbols indicate external characteristics.

LABORATORY GROWN  
DIAMOND REPORT

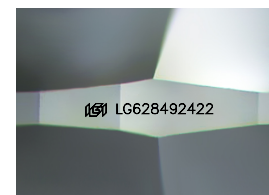
## GRADING SCALES

## CLARITY

IF	VVS <sup>1-2</sup>	VS <sup>1-2</sup>	SI <sup>1-2</sup>	I <sup>1-3</sup>
Internally Flawless	Very Very Slightly Included	Very Slightly Included	Slightly Included	Included

**COLOR**

D E F G H I J Faint Very Light Light



Sample Image Used



© IGI 2020, International Gemological Institute

FD - 10 20

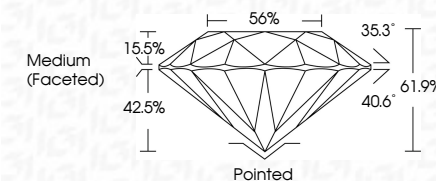
**www.igi.org**

## LABORATORY GROWN DIAMOND REPORT

April 4, 2024	
IGI Report Number	LG628492422
Description	LABORATORY GROWN DIAMOND
Shape and Cutting Style	ROUND BRILLIANT
Measurements	7.82 - 7.87 X 4.86 MM

## GRADING RESULTS

Carat Weight	1.85 CARAT
Color Grade	E
Clarity Grade	VS 1
Cut Grade	IDEAL



### ADDITIONAL GRADING INFORMATION

Polish	EXCELLENT
Symmetry	EXCELLENT
Fluorescence	NONE
Inscription(s)	(15) LG628492422

Comments: This Laboratory Grown Diamond was created by Chemical Vapor Deposition (CVD) growth process and may include post-growth treatment.  
Type IIa



April 4, 2024	GI Report No. 1562497222	ROUND BRILLIANT	1.85 CARAT	VS 1	IDEAL	61.7%	56%	Medium (Faceted)	Pointed	Excellent	EXCELLENT	NONE	#611562497222
		Color Weight	Color Grade	Clarity Grade	Car Grade	Depth	Table	Girdle	Culet	Polish	Symmetry	Fluorescence	Inscriptions(s)
		2.82 - 2.87 x 4.86 MM											
<b>Comments:</b> This is a Crown Diamond was treated by Chemical Vapor Deposition (CVD) growth process and may include post-growth treatment. Type IIa													