

ELECTRONIC COPY

LABORATORY GROWN DIAMOND REPORT

| | |
|-------------------------|-----------------------------|
| April 10, 2024 | |
| IGI Report Number | LG629400121 |
| Description | LABORATORY GROWN DIAMOND |
| Shape and Cutting Style | ROUND BRILLIANT |
| Measurements | 9.23 - 9.27 X 5.67 MM |

GRADING RESULTS

| | |
|---------------|-------------|
| Carat Weight | 3.01 CARATS |
| Color Grade | D |
| Clarity Grade | VS 1 |
| Cut Grade | IDEAL |

ADDITIONAL GRADING INFORMATION

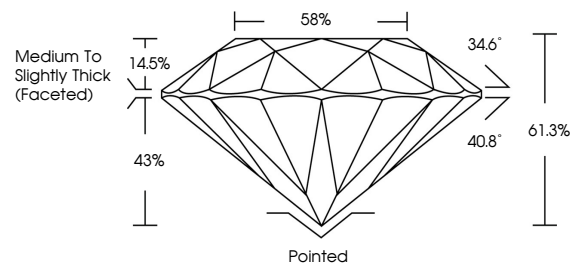
| | |
|----------------|----------------|
| Polish | EXCELLENT |
| Symmetry | EXCELLENT |
| Fluorescence | NONE |
| Inscription(s) | 15 LG629400121 |

Comments: This Laboratory Grown Diamond was created by Chemical Vapor Deposition (CVD) growth process and may include post-growth treatment.
Type IIa

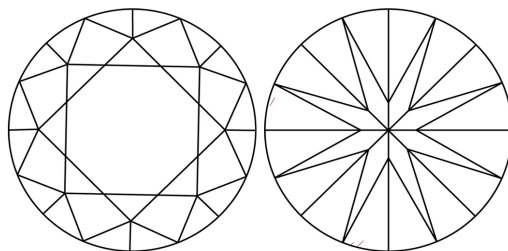
LABORATORY GROWN DIAMOND REPORT

LG629400121
Report verification at igi.org

PROPORTIONS



CLARITY CHARACTERISTICS



KEY TO SYMBOLS

Red symbols indicate internal characteristics.
Green symbols indicate external characteristics.

LABORATORY GROWN
DIAMOND REPORT

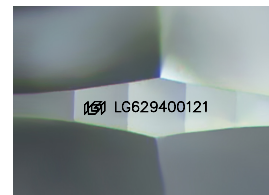
GRADING SCALES

CLARITY

| IF | VVS ¹⁻² | VS ¹⁻² | SI ¹⁻² | I ¹⁻³ |
|---------------------|-----------------------------|------------------------|-------------------|------------------|
| Internally Flawless | Very Very Slightly Included | Very Slightly Included | Slightly Included | Included |

COLOR

D E F G H I J Faint Very Light Light



Sample Image Used



© IGI 2020, International Gemological Institute

FD - 10 20



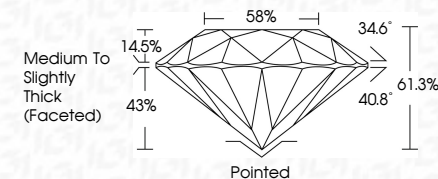
THIS DOCUMENT WAS PRODUCED WITH THE FOLLOWING SECURITY MEASURES: SPECIAL DOCUMENT PAPER, INK SCREENS, WATERMARK, BACKGROUND DESIGNS, HOLOGRAM AND OTHER SECURITY FEATURES NOT LISTED AND DO EXCEED DOCUMENT SECURITY INDUSTRY GUIDELINES

LABORATORY GROWN DIAMOND REPORT

| | |
|-------------------------|-----------------------------|
| April 10, 2024 | |
| IGI Report Number | LG629400121 |
| Description | LABORATORY GROWN DIAMOND |
| Shape and Cutting Style | ROUND BRILLIANT |
| Measurements | 9.23 - 9.27 X 5.67 MM |

GRADING RESULTS

| | |
|---------------|-------------|
| Carat Weight | 3.01 CARATS |
| Color Grade | D |
| Clarity Grade | VS 1 |
| Cut Grade | IDEAL |



ADDITIONAL GRADING INFORMATION

| | |
|----------------|------------------|
| Polish | EXCELLENT |
| Symmetry | EXCELLENT |
| Fluorescence | NONE |
| Inscription(s) | 1151 LG629400121 |

Comments: This Laboratory Grown Diamond was created by Chemical Vapor Deposition (CVD) growth process and may include post-growth treatment.
Type IIa



IG

| | | | | | | | | | | | | | | | | |
|--------------------------|-----------------------|-----------------|-------------|---|------|-------|-------|-----|----------------------------------|---------|-----------|-----------|------|------------------|--|----------|
| April 10, 2024 | Report No LG599400121 | ROUND BRILLIANT | 3.01 CARATS | D | VS 1 | IDEAL | 61.5% | 59% | Medium to Slightly Thick Faceted | Pointed | EXCELLENT | EXCELLENT | NONE | lg61 LG599400121 | Comments: This Very Good Diamond was treated by Chemical Vapor Deposition (CVD) growth process and may include post-growth treatment. | Type IIA |
| GI Report No LG599400121 | | | 3.01 CARATS | D | Vs 1 | IDEAL | 61.5% | 59% | Medium to Slightly Thick Faceted | Pointed | EXCELLENT | EXCELLENT | NONE | lg61 LG599400121 | Comments: This Very Good Diamond was treated by Chemical Vapor Deposition (CVD) growth process and may include post-growth treatment. | Type IIA |