



**ELECTRONIC COPY**

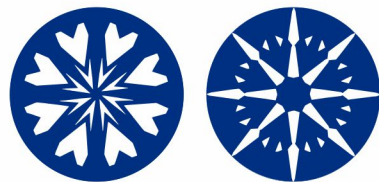
## LABORATORY GROWN DIAMOND REPORT

April 12, 2024	
IGI Report Number	LG629488364
Description	LABORATORY GROWN DIAMOND
Shape and Cutting Style	ROUND BRILLIANT
Measurements	7.91 - 7.95 X 4.85 MM
<b>GRADING RESULTS</b>	
Carat Weight	1.85 CARAT
Color Grade	E
Clarity Grade	VVS 2
Cut Grade	IDEAL

### ADDITIONAL GRADING INFORMATION

Polish	EXCELLENT
Symmetry	EXCELLENT
Fluorescence	NONE
Inscription(s)	LG629488364

Comments: HEARTS & ARROWS  
This Laboratory Grown Diamond was created by  
Chemical Vapor Deposition (CVD) growth process and  
may include post-growth treatment.  
Type IIa

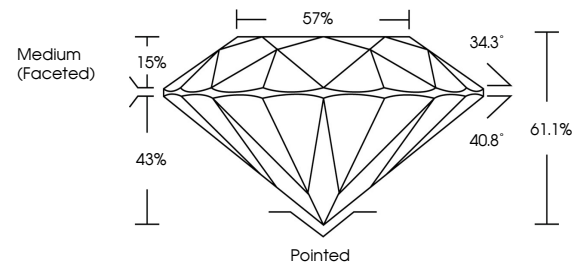


LABORATORY GROWN DIAMOND REPORT

LG629488364

Report verification at [igi.org](http://igi.org)

## PROPORTIONS



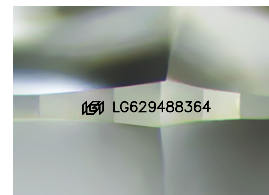
## GRADING SCALES

## CLARITY

IF	VVS <sup>1-2</sup>	VS <sup>1-2</sup>	SI <sup>1-2</sup>	I <sup>1-3</sup>
Internally Flawless	Very Very Slightly Included	Very Slightly Included	Slightly Included	Included

**COLOR**

D E F G H I J Faint Very Light Light



Sample Image Used



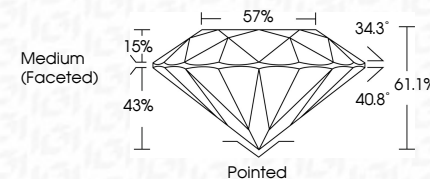
© IGI 2020, International Gemological Institute

FD - 10 20



LABORATORY GROWN DIAMOND REPORT

April 12, 2024	
IGI Report Number	LG629488364
Description	LABORATORY GROWN DIAMOND
Shape and Cutting Style	ROUND BRILLIANT
Measurements	7.91 - 7.95 X 4.85 MM
<b>GRADING RESULTS</b>	
Carat Weight	1.85 CARAT
Color Grade	E
Clarity Grade	VVS 2
Cut Grade	IDEAL



### ADDITIONAL GRADING INFORMATION

Polish	EXCELLENT
Symmetry	EXCELLENT
Fluorescence	NONE
Inscription(s)	 LG629488364

Comments: HEARTS & ARROWS  
This Laboratory Grown Diamond was created by  
Chemical Vapor Deposition (CVD) growth process and  
may include post-growth treatment.  
Type IIa

April 12, 2024  
IGI Report No LG629488364  
ROUND BRILLIANT

7.91 - 7.95 X 4.85 MM  
Carat Weight 1.85 CARAT

1.85 CARAT	1.85 CARAT
Color Grade	Color Grade
Carat Weight	Carat Weight
1.91 - 1.96 X 4.85 MM	1.91 - 1.96 X 4.85 MM

Clarity Grade	WS 2	IDEAL
Out Grade		

Our Grade	Ideal
Depth	61.1%
Table	57%

Circle	Medium (Faceted)
1	
2	
3	
4	
5	
6	
7	
8	
9	
10	
11	
12	
13	
14	
15	
16	
17	
18	
19	
20	
21	
22	
23	
24	
25	
26	
27	
28	
29	
30	
31	
32	
33	
34	
35	
36	
37	
38	
39	
40	
41	
42	
43	
44	
45	
46	
47	
48	
49	
50	

	Pointed	EXCELLENT
Culet		
Polish		

	EXCELLENT	NONE
Symmetry		
Fluorescence		

Inscription(s)	Comments:

191 LG629488364

**HEARTS & ARROWS**  
This Laboratory Grown Diamond was  
created by Chemical Vapor Deposition

(CVD) growth process and may include post-growth treatment.  
Type IIa