



**ELECTRONIC COPY**

## LABORATORY GROWN DIAMOND REPORT

April 26, 2024	
IGI Report Number	LG630434311
Description	LABORATORY GROWN DIAMOND
Shape and Cutting Style	ROUND BRILLIANT
Measurements	7.89 - 7.93 X 4.88 MM

## GRADING RESULTS

Carat Weight	1.89 CARAT
Color Grade	E
Clarity Grade	VVS 2
Cut Grade	IDEAL

### ADDITIONAL GRADING INFORMATION

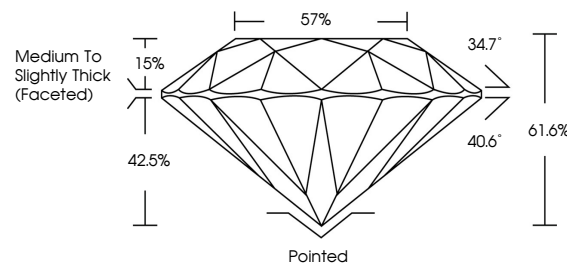
Polish	EXCELLENT
Symmetry	EXCELLENT
Fluorescence	NONE
Inscription(s)	 LG630434311

Comments: HEARTS & ARROWS  
As Grown - No indication of post-growth treatment.  
This Laboratory Grown Diamond was created by  
Chemical Vapor Deposition (CVD) growth process.  
Type IIa

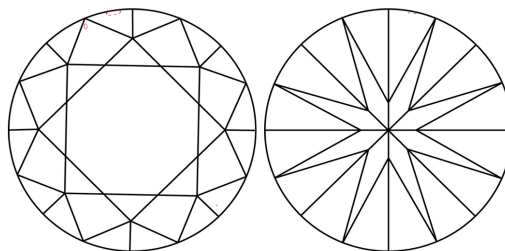
## LABORATORY GROWN DIAMOND REPORT

LG630434311  
Report verification at [igi.org](http://igi.org)

## PROPORTIONS



## CLARITY CHARACTERISTICS



## KEY TO SYMBOLS

Red symbols indicate internal characteristics.  
Green symbols indicate external characteristics.



**www.igi.org**

LABORATORY GROWN  
DIAMOND REPORT

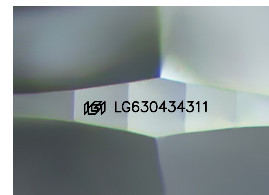
## GRADING SCALES

## CLARITY

IF	VVS <sup>1-2</sup>	VS <sup>1-2</sup>	SI <sup>1-2</sup>	I <sup>1-3</sup>
Internally Flawless	Very Very Slightly Included	Very Slightly Included	Slightly Included	Included

**COLOR**

D E F G H I J Faint Very Light Light



Sample Image Used



© IGI 2020, International Gemological Institute

FD - 10 20



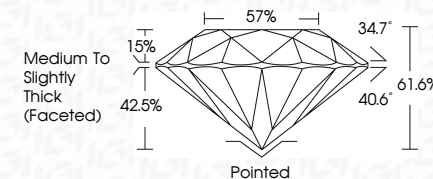
THIS DOCUMENT WAS PRODUCED WITH THE FOLLOWING SECURITY MEASURES: SPECIAL DOCUMENT PAPER, INK SCREENS, WATERMARK BACKGROUND DESIGNS, HOLOGRAM AND OTHER SECURITY FEATURES NOT LISTED AND DO EXCEED DOCUMENT SECURITY INDUSTRY GUIDELINES

## LABORATORY GROWN DIAMOND REPORT

April 26, 2024	
IGI Report Number	LG630434311
Description	LABORATORY GROWN DIAMOND
Shape and Cutting Style	ROUND BRILLIANT
Measurements	7.89 - 7.93 X 4.88 MM

## GRADING RESULTS

Carat Weight	1.89 CARAT
Color Grade	E
Clarity Grade	VVS 2
Cut Grade	IDEAL



### ADDITIONAL GRADING INFORMATION

Polish	EXCELLENT
Symmetry	EXCELLENT
Fluorescence	NONE
Inscription(s)	 LG630434311

Comments: HEARTS & ARROWS  
As Grown - No indication of post-growth treatment.  
This Laboratory Grown Diamond was created by  
Chemical Vapor Deposition (CVD) growth process.  
Type IIa



IG

April 26, 2024  
 GJ Report No LG630434311

<b>89 - 7.93 X 4.88 MM</b>	<b>1.89 CARAT E</b>
Carat Weight	VVS 2
Color Grade	IDEAL
Clarity Grade	61.6%
Cut Grade	57%
Depth	Medium to Slightly Thick (Faceted)
Table	Pointed
Girdle	EXCELLENT
Culet	SYMMETRY
Polish	FLUORESCENCE
Symmetry	NONE
Fluorescence	Item # C65048121

**Comments:**  
**HEARTS & ARROWS**  
As Grown - No Indication of post-growth treatment.  
This Laboratory Grown Diamond was created by Chemical Vapor Deposition (CVD) growth process.