

**ELECTRONIC COPY**

## LABORATORY GROWN DIAMOND REPORT

April 26, 2024	
IGI Report Number	LG630434312
Description	LABORATORY GROWN DIAMOND
Shape and Cutting Style	ROUND BRILLIANT
Measurements	7.90 - 7.92 X 4.89 MM

## GRADING RESULTS

Carat Weight	1.89 CARAT
Color Grade	E
Clarity Grade	VVS 1
Cut Grade	IDEAL

### ADDITIONAL GRADING INFORMATION

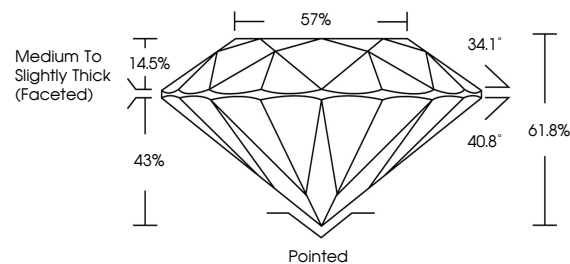
Polish	EXCELLENT
Symmetry	EXCELLENT
Fluorescence	NONE
Inscription(s)	 LG630434312

Comments: HEARTS & ARROWS  
As Grown - No indication of post-growth treatment.  
This Laboratory Grown Diamond was created by  
Chemical Vapor Deposition (CVD) growth process.  
Type IIa

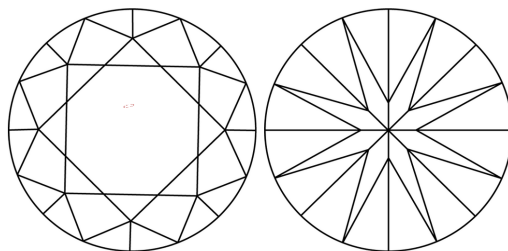
## LABORATORY GROWN DIAMOND REPORT

LG630434312  
Report verification at [igi.org](https://igi.org)

## PROPORTIONS

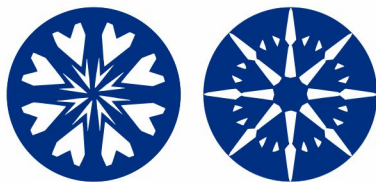


## CLARITY CHARACTERISTICS



## KEY TO SYMBOLS

Red symbols indicate internal characteristics.  
Green symbols indicate external characteristics.



**www.igi.org**

LABORATORY GROWN  
DIAMOND REPORT

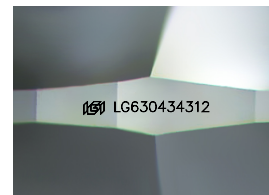
## GRADING SCALES

## CLARITY

IF	VVS <sup>1-2</sup>	VS <sup>1-2</sup>	SI <sup>1-2</sup>	I <sup>1-3</sup>
Internally Flawless	Very Very Slightly Included	Very Slightly Included	Slightly Included	Included

**COLOR**

D E F G H I J Faint Very Light Light



Sample Image Used



© IGI 2020, International Gemological Institute

FD - 10 20



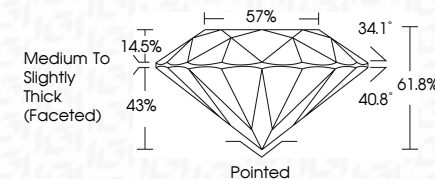
THIS DOCUMENT WAS PRODUCED WITH THE FOLLOWING SECURITY MEASURES: SPECIAL DOCUMENT PAPER, INK SCREENS, WATERMARK, BACKGROUND DESIGNS, HOLOGRAM AND OTHER SECURITY FEATURES NOT LISTED AND DO EXCEED DOCUMENT SECURITY INDUSTRY GUIDELINES

## LABORATORY GROWN DIAMOND REPORT

April 26, 2024	
IGI Report Number	LG630434312
Description	LABORATORY GROWN DIAMOND
Shape and Cutting Style	ROUND BRILLIANT
Measurements	7.90 - 7.92 X 4.89 MM

## GRADING RESULTS

Carat Weight	1.89 CARAT
Color Grade	E
Clarity Grade	VVS 1
Cut Grade	IDEAL



### ADDITIONAL GRADING INFORMATION

Polish	EXCELLENT
Symmetry	EXCELLENT
Fluorescence	NONE
Inscription(s)	15 LG-630434312

Comments: HEARTS & ARROWS  
As Grown - No indication of post-growth treatment.  
This Laboratory Grown Diamond was created by  
Chemical Vapor Deposition (CVD) growth process.  
Type IIa



IG

<b>April 26, 2024</b>	<b>Report No.</b> LGS0404312	<b>1.89 CARAT E VS1 IDEAL 615% 57%</b>	<b>Medium to Slightly Thick (Faceted)</b>	<b>Poited EXCELLENT EXCELLENT NONE #61 LGS0404312</b>
<b>ROUND BRILLANT</b>	<b>G</b>	<b>1.90 - 1.92 X 4.89 MM</b>	<b>Color Grade</b>	<b>Comments:</b>
			<b>Clarity Grade</b>	<b>As Grown - No indication of post-growth treatment.</b>
			<b>Cut Grade</b>	<b>This Laboratory Growth Diamond was created by Chemical Vapor Deposition (CVD) growth process.</b>
			<b>Depth</b>	
			<b>Table</b>	
			<b>Girdle</b>	
			<b>Fluorescence</b>	
			<b>Symmetry</b>	
			<b>Inscriptions(s)</b>	
			<b>Quiet</b>	
			<b>Polish</b>	