



ELECTRONIC COPY

LG630439382
Report verification at igi.org



June 10, 2024
IGI Report Number LG630439382
Description LABORATORY GROWN DIAMOND
Shape and Cutting Style CUT CORNERED RECTANGULAR MODIFIED BRILLIANT
Measurements 9.08 X 6.39 X 4.30 MM
GRADING RESULTS
Carat Weight 2.07 CARATS
Color Grade H
Clarity Grade VVS 2
Cut Grade EXCELLENT

LABORATORY GROWN DIAMOND REPORT

June 10, 2024
IGI Report Number LG630439382
Description LABORATORY GROWN DIAMOND
Shape and Cutting Style CUT CORNERED RECTANGULAR MODIFIED BRILLIANT
Measurements 9.08 X 6.39 X 4.30 MM

GRADING RESULTS

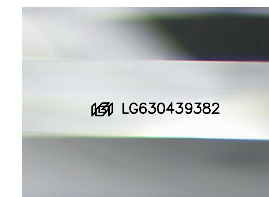
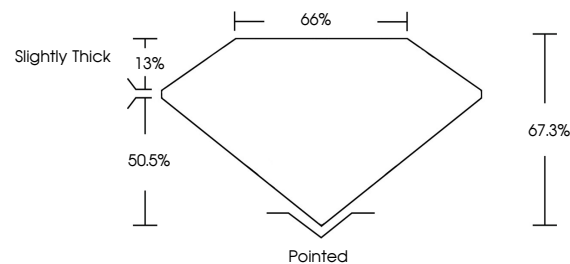
Carat Weight 2.07 CARATS
Color Grade H
Clarity Grade VVS 2
Cut Grade EXCELLENT

ADDITIONAL GRADING INFORMATION

Polish EXCELLENT
Symmetry EXCELLENT
Fluorescence NONE
Inscription(s) IGI LG630439382

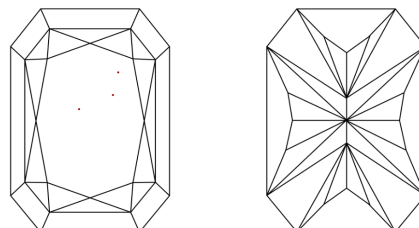
Comments: Additional pinpoints not shown. This Laboratory Grown Diamond was created by Chemical Vapor Deposition (CVD) growth process. Type IIa.Indications of post-growth treatment.

PROPORTIONS



Sample Image Used

CLARITY CHARACTERISTICS



KEY TO SYMBOLS

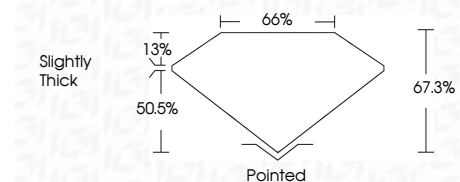
Red symbols indicate internal characteristics. Green symbols indicate external characteristics.

COLOR

D E F G H I J Faint Very Light Light

CLARITY

IF VVS 1-2 VS 1-2 SI 1-2 I 1-3
Internally Flawless Very Very Slightly Included Very Slightly Included Slightly Included Included



ADDITIONAL GRADING INFORMATION

Polish EXCELLENT
Symmetry EXCELLENT
Fluorescence NONE
Inscription(s) IGI LG630439382
Comments: Additional pinpoints not shown. This Laboratory Grown Diamond was created by Chemical Vapor Deposition (CVD) growth process. Type IIa.Indications of post-growth treatment.



IGI



June 10, 2024
IGI Report No LG630439382
CUT CORNERED RECT. MODIFIED BRILLIANT
9.08 X 6.39 X 4.30 MM
2.07 CARATS
H
2.07 CARATS
H
VVS 2
EXCELLENT
67.3%
66%
Slightly Thick
Pointed
EXCELLENT
EXCELLENT
NONE
IGI LG630439382
Comments: Additional pinpoints not shown. This Laboratory Grown Diamond was created by Chemical Vapor Deposition (CVD) growth process. Type IIa.Indications of post-growth treatment.