

ELECTRONIC COPY

LABORATORY GROWN DIAMOND REPORT

April 22, 2024	
IGI Report Number	LG630452206
Description	LABORATORY GROWN DIAMOND
Shape and Cutting Style	ROUND BRILLIANT
Measurements	7.10 - 7.13 X 4.42 MM

GRADING RESULTS

Carat Weight	1.39 CARAT
Color Grade	G
Clarity Grade	VS 1
Cut Grade	IDEAL

ADDITIONAL GRADING INFORMATION

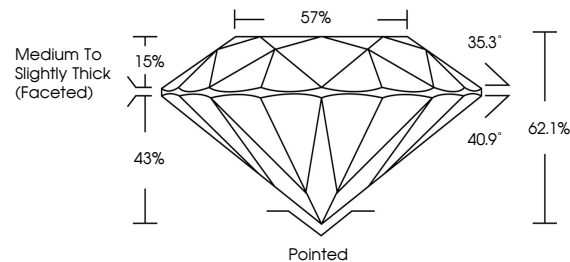
Polish	EXCELLENT
Symmetry	EXCELLENT
Fluorescence	NONE
Inscription(s)	LG630452206

Comments: This Laboratory Grown Diamond was created by Chemical Vapor Deposition (CVD) growth process and may include post-growth treatment. Type IIa

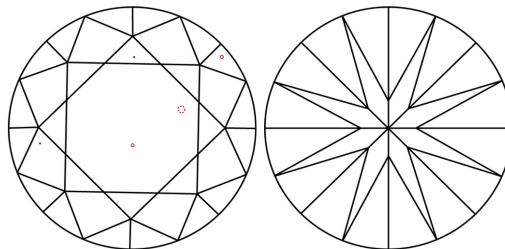
LABORATORY GROWN DIAMOND REPORT

LG630452206
Report verification at lgi.org

PROPORTIONS



CLARITY CHARACTERISTICS



KEY TO SYMBOLS

Red symbols indicate internal characteristics.
Green symbols indicate external characteristics.

LABORATORY GROWN
DIAMOND REPORT

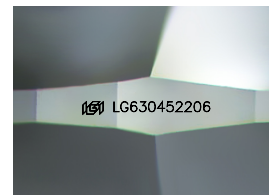
GRADING SCALES

CLARITY

IF	VVS ¹⁻²	VS ¹⁻²	SI ¹⁻²	I ¹⁻³
Internally Flawless	Very Very Slightly Included	Very Slightly Included	Slightly Included	Included

COLOR

D E F G H I J Faint Very Light Light



Sample Image Used



© IGI 2020, International Gemological Institute

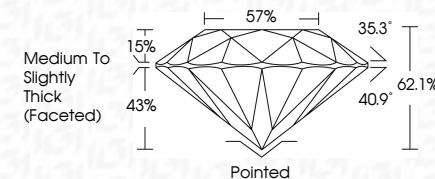
FD - 10 20

LABORATORY GROWN DIAMOND REPORT

April 22, 2024	
IGI Report Number	LG630452206
Description	LABORATORY GROWN DIAMOND
Shape and Cutting Style	ROUND BRILLIANT
Measurements	7.10 - 7.13 X 4.42 MM

GRADING RESULTS

Carat Weight	1.39 CARAT
Color Grade	G
Clarity Grade	VS 1
Cut Grade	IDEAL



ADDITIONAL GRADING INFORMATION

Polish	EXCELLENT
Symmetry	EXCELLENT
Fluorescence	NONE
Inscription(s)	 LG-630452206

Comments: This Laboratory Grown Diamond was created by Chemical Vapor Deposition (CVD) growth process and may include post-growth treatment.
Type IIa



IG

April 22, 2024	7.10 - 7.13 X 4.42 MM	Color Grade	Vs1	1.39 CARAT	G
IGI Report No. LG530452205		Clarity Grade	IDEAL		
ROUND BRILLIANT		Cut Grade	62.1%		57%
		Depth	Medium to Slightly Thick (Faceted)		
		Table			
		Girdle			
		Culet	Pointed		
		Polish	EXCELLENT		
		Symmetry	EXCELLENT		
		Fluorescence	NONE		
		Inscriptions(s)	4891 LG530452205		
<p>Comments: This is a Chemically Grown Diamond was created by Chemical Vapor Deposition (CVD) growth process and may include post-growth treatment.</p> <p>Type IIC</p>					

Comments:
This Laboratory Grown Diamond was created by Chemical Vapor Deposition (CVD) growth process and may include post-growth treatment.