



ELECTRONIC COPY

LABORATORY GROWN DIAMOND REPORT

April 27, 2024	
IGI Report Number	LG631433166
Description	LABORATORY GROWN DIAMOND
Shape and Cutting Style	ROUND BRILLIANT
Measurements	10.19 - 10.24 X 6.34 MM

GRADING RESULTS

Carat Weight	4.07 CARATS
Color Grade	G
Clarity Grade	VVS 2
Cut Grade	IDEAL

ADDITIONAL GRADING INFORMATION

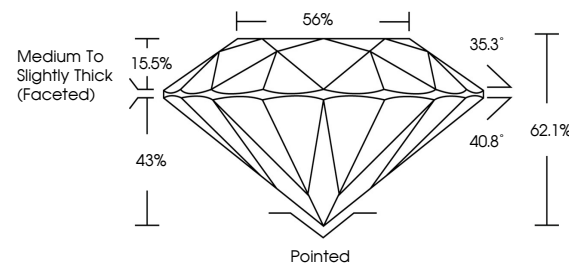
Polish	EXCELLENT
Symmetry	EXCELLENT
Fluorescence	NONE
Inscription(s)	15 LG631433166

Comments: This Laboratory Grown Diamond was created by Chemical Vapor Deposition (CVD) growth process and may include post-growth treatment.
Type IIa

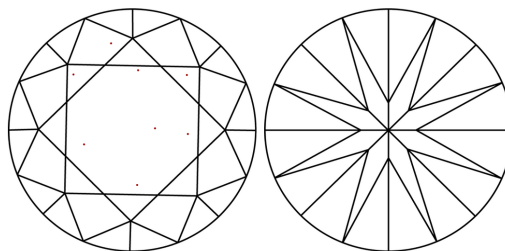
LABORATORY GROWN DIAMOND REPORT

LG631433166
Report verification at igi.org

PROPORTIONS



CLARITY CHARACTERISTICS



KEY TO SYMBOLS

Red symbols indicate internal characteristics.
Green symbols indicate external characteristics.

LABORATORY GROWN
DIAMOND REPORT

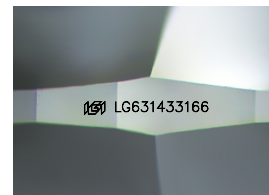
GRADING SCALES

CLARITY

IF	VVS ¹⁻²	VS ¹⁻²	SI ¹⁻²	I ¹⁻³
Internally Flawless	Very Very Slightly Included	Very Slightly Included	Slightly Included	Included

COLOR

D E F G H I J Faint Very Light Light



Sample Image Used

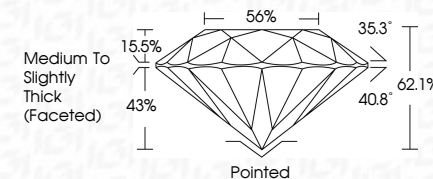


© IGI 2020, International Gemological Institute


FD - 10 20

LABORATORY GROWN DIAMOND REPORT

April 27, 2024	
IGI Report Number	LG631433166
Description	LABORATORY GROWN DIAMOND
Shape and Cutting Style	ROUND BRILLIANT
Measurements	10.19 - 10.24 X 6.34 MM
GRADING RESULTS	
Carat Weight	4.07 CARATS
Color Grade	G
Clarity Grade	VVS 2
Cut Grade	IDEAL



ADDITIONAL GRADING INFORMATION

Polish	EXCELLENT
Symmetry	EXCELLENT
Fluorescence	NONE
Inscription(s)	 LG631433166
Comments: This Laboratory Grown Diamond was created by Chemical Vapor Deposition (CVD) growth process and may include post-growth treatment.	
Type IIa	



IG

April 27, 2024	Carat Weight	4.07 CARATS
GI Report No. LG331433166	Color Grade	G
ROUND BRILLIANT	Clarity Grade	VVS 2
	Cut Grade	IDEAL
	Depth	62.1%
	Table	55%
	Medium To Slightly Thick (focused)	
	Polish	Polished
	Symmetry	EXCELLENT
	Fluorescence	EXCELLENT
	Inscriptions(s)	NONE
		#69 US631433166

Comments:

The Laboratory Grown Diamond was created by Chemical Vapor Deposition and may include post-growth treatment.

Type IIa