



ELECTRONIC COPY

LABORATORY GROWN DIAMOND REPORT

| | |
|-------------------------|-----------------------------|
| April 27, 2024 | |
| IGI Report Number | LG631439031 |
| Description | LABORATORY GROWN DIAMOND |
| Shape and Cutting Style | ROUND BRILLIANT |
| Measurements | 9.86 - 9.91 X 5.98 MM |

GRADING RESULTS

| | |
|---------------|-------------|
| Carat Weight | 3.64 CARATS |
| Color Grade | G |
| Clarity Grade | SI 1 |
| Cut Grade | IDEAL |

ADDITIONAL GRADING INFORMATION

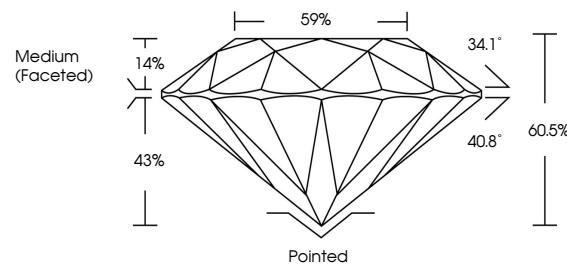
| | |
|----------------|-------------|
| Polish | EXCELLENT |
| Symmetry | EXCELLENT |
| Fluorescence | NONE |
| Inscription(s) | LG631439031 |

Comments: This Laboratory Grown Diamond was created by Chemical Vapor Deposition (CVD) growth process and may include post-growth treatment.
Type IIa

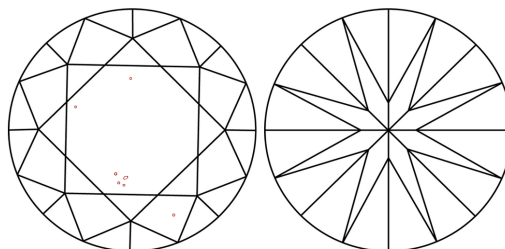
LABORATORY GROWN DIAMOND REPORT

LG631439031
Report verification at igi.org

PROPORTIONS



CLARITY CHARACTERISTICS



KEY TO SYMBOLS

Red symbols indicate internal characteristics.
Green symbols indicate external characteristics.

LABORATORY GROWN
DIAMOND REPORT

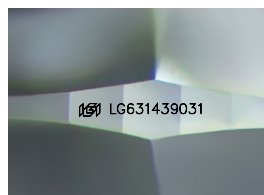
GRADING SCALES

CLARITY

| IF | VVS ¹⁻² | VS ¹⁻² | SI ¹⁻² | I ¹⁻³ |
|---------------------|-----------------------------|------------------------|-------------------|------------------|
| Internally Flawless | Very Very Slightly Included | Very Slightly Included | Slightly Included | Included |

COLOR

D E F G H I J Faint Very Light Light



Sample Image Used



© IGI 2020, International Gemological Institute

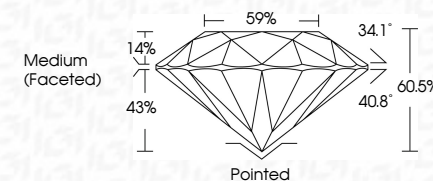
FD - 10 20

LABORATORY GROWN DIAMOND REPORT

| | |
|-------------------------|-----------------------------|
| April 27, 2024 | |
| IGI Report Number | LG631439031 |
| Description | LABORATORY GROWN DIAMOND |
| Shape and Cutting Style | ROUND BRILLIANT |
| Measurements | 9.86 - 9.91 X 5.98 MM |

GRADING RESULTS

| | |
|---------------|-------------|
| Carat Weight | 3.64 CARATS |
| Color Grade | G |
| Clarity Grade | SI 1 |
| Cut Grade | IDEAL |



ADDITIONAL GRADING INFORMATION

| | |
|----------------|-----------------|
| Polish | EXCELLENT |
| Symmetry | EXCELLENT |
| Fluorescence | NONE |
| Inscription(s) | 15 LG-631439031 |

Comments: This Laboratory Grown Diamond was created by Chemical Vapor Deposition (CVD) growth process and may include post-growth treatment.
Type IIa



| | | | | | | | | | |
|----------------|--------------------------|-----------------|--------------------------------|---|-------------|--|--|-----------------|--|
| April 27, 2024 | G Report No. LG331439031 | ROUND BRILLIANT | 1.01 CT 8.8 x 9.1 X 5.98 MM | Color Grade G | 3.64 CARATS | S I 1 IDEAL 60.6% 59% Medium (Faceted) | Pointed EXCELLENT EXCELLENT NONE | (#) LG331439031 | Comments: The Laboratory Grown Diamond was created by Chemical Vapor Deposition (CVD) growth process and may include post-growth treatment. |
| | | | | Carat Weight Color Grade Clarity Grade Cut Grade Depth Table Girdle | | | Culet Polish Symmetry Fluorescence Inscriptions(s) | | type Ia |