

ELECTRONIC COPY

LABORATORY GROWN DIAMOND REPORT

| | |
|-------------------------|-----------------------------|
| April 27, 2024 | |
| IGI Report Number | LG631440952 |
| Description | LABORATORY GROWN DIAMOND |
| Shape and Cutting Style | OVAL BRILLIANT |
| Measurements | 11.58 X 7.77 X 4.86 MM |

GRADING RESULTS

| | |
|---------------|--------------------|
| Carat Weight | 2.82 CARATS |
| Color Grade | FANCY INTENSE PINK |
| Clarity Grade | VS 1 |

ADDITIONAL GRADING INFORMATION

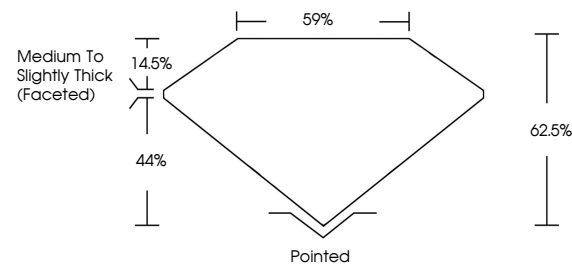
| | |
|----------------|-------------|
| Polish | EXCELLENT |
| Symmetry | EXCELLENT |
| Fluorescence | SLIGHT |
| Inscription(s) | LG631440952 |

Comments: This Laboratory Grown Diamond was created by Chemical Vapor Deposition (CVD) growth process.
Indications of post-growth treatment.

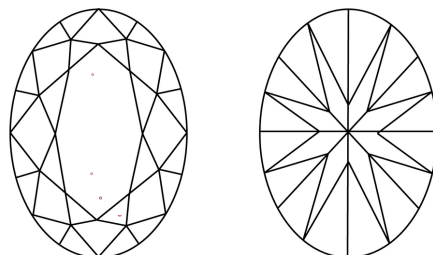
LABORATORY GROWN DIAMOND REPORT

LG631440952
Report verification at igi.org

PROPORTIONS



CLARITY CHARACTERISTICS



KEY TO SYMBOLS

Red symbols indicate internal characteristics.
Green symbols indicate external characteristics.

LABORATORY GROWN
DIAMOND REPORT

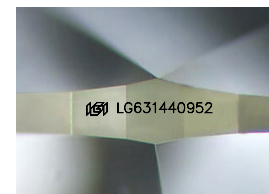
GRADING SCALES

CLARITY

| IF | VVS ¹⁻² | VS ¹⁻² | SI ¹⁻² | I ¹⁻³ |
|------------------------|--------------------------------|---------------------------|----------------------|------------------|
| Internally Flawless | Very Very Slightly Included | Very Slightly Included | Slightly Included | Included |

COLOR

| | | | | | | | | | |
|------------|---|---|-------------|---|-------|---|---------------|------------|-------------|
| D | E | F | G | H | I | J | Faint | Very Light | Light |
| Light Tint | | | Fancy Light | | Fancy | | Fancy Intense | | Fancy Vivid |



Sample Image Used

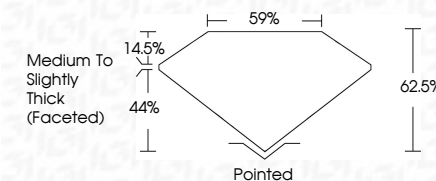


© IGI 2020, International Gemological Institute

FD - 10 20



| | |
|-------------------------|-----------------------------|
| April 27, 2024 | |
| IGI Report Number | LG631440952 |
| Description | LABORATORY GROWN DIAMOND |
| Shape and Cutting Style | OVAL BRILLIANT |
| Measurements | 11.58 X 7.77 X 4.86 MM |
| GRADING RESULTS | |
| Carat Weight | 2.82 CARATS |
| Color Grade | FANCY INTENSE PINK |
| Clarity Grade | VS 1 |



ADDITIONAL GRADING INFORMATION

| | |
|--|----------------------------|
| Polish | EXCELLENT |
| Symmetry | EXCELLENT |
| Fluorescence | SLIGHT |
| Inscription(s) | LG3 LG631440952 |
| <p>Comments: This Laboratory Grown Diamond was created by Chemical Vapor Deposition (CVD) growth process.</p> <p>Indications of post-growth treatment.</p> | |

| | | | | | | | | | | |
|--------------------------|-----------------------|-------------|---------------|-------|----------|-----------|--------------|-----------------|-------------------|---|
| April 27, 2024 | 2.82 CARATS | VSI | 62.5% | 89% | Polished | EXCELLENT | EXCELLENT | SLIGHT | 681 US\$314,009.2 | Comments: Created by Crown Vapor used created by Crown Vapor deposition CVD growth process. Indications of post-growth treatment. |
| GI Report No. LG43144092 | FANCY INTERSE PINK | | | | | | | | | |
| OVAL BRILLANT | 1.18 X 7.77 X 4.86 MM | Color Grade | Clarity Grade | Depth | Cut | Symmetry | Fluorescence | Inscriptions(s) | | |
| | Carat Weight | Color Grade | Clarity Grade | Depth | Cut | Symmetry | Fluorescence | Inscriptions(s) | | |
| | | Color Grade | Clarity Grade | Depth | Cut | Symmetry | Fluorescence | Inscriptions(s) | | |
| | | Color Grade | Clarity Grade | Depth | Cut | Symmetry | Fluorescence | Inscriptions(s) | | |