



ELECTRONIC COPY

LABORATORY GROWN DIAMOND REPORT

April 29, 2024	
IGI Report Number	LG631457313
Description	LABORATORY GROWN DIAMOND
Shape and Cutting Style	ROUND BRILLIANT
Measurements	10.15 - 10.20 X 6.37 MM

GRADING RESULTS

Carat Weight	4.12 CARATS
Color Grade	F
Clarity Grade	SI 1
Cut Grade	EXCELLENT

ADDITIONAL GRADING INFORMATION

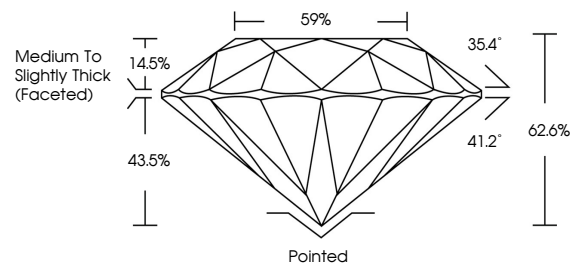
Polish	EXCELLENT
Symmetry	EXCELLENT
Fluorescence	NONE
Inscription(s)	LG631457313

Comments: This Laboratory Grown Diamond was created by Chemical Vapor Deposition (CVD) growth process and may include post-growth treatment.
Type IIa

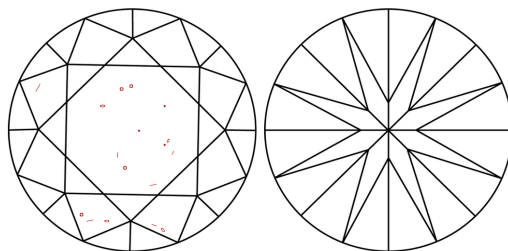
LABORATORY GROWN DIAMOND REPORT

LG631457313
Report verification at igi.org

PROPORTIONS



CLARITY CHARACTERISTICS



KEY TO SYMBOLS

Red symbols indicate internal characteristics.
Green symbols indicate external characteristics.

LABORATORY GROWN
DIAMOND REPORT

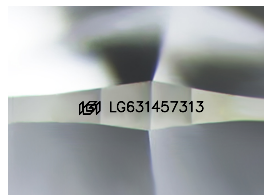
GRADING SCALES

CLARITY

IF	VVS ¹⁻²	VS ¹⁻²	SI ¹⁻²	I ¹⁻³
Internally Flawless	Very Very Slightly Included	Very Slightly Included	Slightly Included	Included

COLOR

D E F G H I J Faint Very Light Light



Sample Image Used



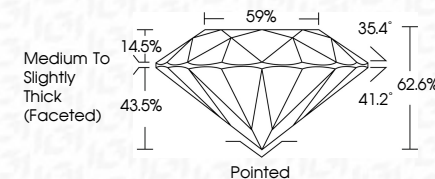
© IGI 2020, International Gemological Institute

FD - 10 20

LABORATORY GROWN DIAMOND REPORT

April 29, 2024	
IGI Report Number	LG631457313
Description	LABORATORY GROWN DIAMOND
Shape and Cutting Style	ROUND BRILLIANT
Measurements	10.15 - 10.20 X 6.37 MM

Carat Weight	4.12 CARATS
Color Grade	F
Clarity Grade	SI 1
Cut Grade	EXCELLENT



ADDITIONAL GRADING INFORMATION

Polish	EXCELLENT
Symmetry	EXCELLENT
Fluorescence	NONE
Inscription(s)	 LG631457313

Comments: This Laboratory Grown Diamond was created by Chemical Vapor Deposition (CVD) growth process and may include post-growth treatment.
Type IIa



IG

April 29, 2024	GROWN BRILLIANT		10.15 x 10.20 x 6.37 MM	4.12 CARATS	F	S I	62.6%	59%	Medium to Slightly Thick (faceted)	Parted	EXCELLENT	EXCELLENT	NONE	#61 US631457313	Comments: Grown Diamond was created by Chemical Vapor Deposition (CVD) growth process and may include post-growth treatment.
	SI	Color Grade	Clarity Grade	Carat Weight	Color Grade	Cut Grade	Table	Girdle		Fluorescence	Symmetry	Inclusions	Polish	Clarity	Type IIA