



ELECTRONIC COPY

LABORATORY GROWN DIAMOND REPORT

| | |
|-------------------------|-----------------------------|
| April 29, 2024 | |
| IGI Report Number | LG631457431 |
| Description | LABORATORY GROWN DIAMOND |
| Shape and Cutting Style | ROUND BRILLIANT |
| Measurements | 9.47 - 9.54 X 5.67 MM |

GRADING RESULTS

| | |
|---------------|-------------|
| Carat Weight | 3.14 CARATS |
| Color Grade | H |
| Clarity Grade | VVS 2 |
| Cut Grade | IDEAL |

ADDITIONAL GRADING INFORMATION

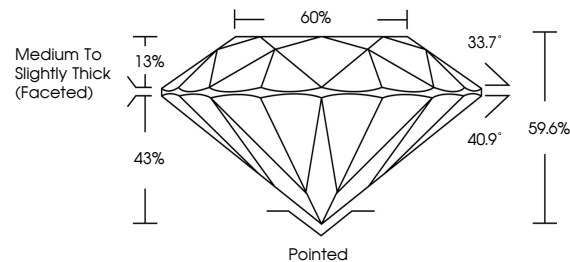
| | |
|----------------|----------------|
| Polish | EXCELLENT |
| Symmetry | EXCELLENT |
| Fluorescence | NONE |
| Inscription(s) | 15 LG631457431 |

Comments: This Laboratory Grown Diamond was created by Chemical Vapor Deposition (CVD) growth process and may include post-growth treatment.
Type IIa

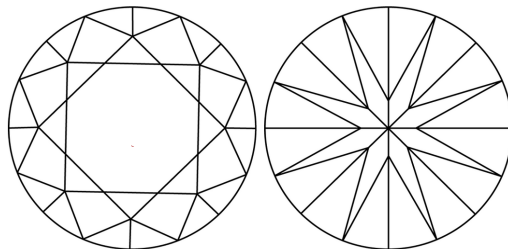
LABORATORY GROWN DIAMOND REPORT

LG631457431
Report verification at igi.org

PROPORTIONS



CLARITY CHARACTERISTICS



KEY TO SYMBOLS

Red symbols indicate internal characteristics.
Green symbols indicate external characteristics.

LABORATORY GROWN
DIAMOND REPORT

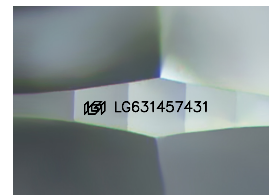
GRADING SCALES

CLARITY

| IF | VVS ¹⁻² | VS ¹⁻² | SI ¹⁻² | I ¹⁻³ |
|---------------------|-----------------------------|------------------------|-------------------|------------------|
| Internally Flawless | Very Very Slightly Included | Very Slightly Included | Slightly Included | Included |

COLOR

D E F G H I J Faint Very Light Light



Sample Image Used



© IGI 2020, International Gemological Institute

FD - 10 20

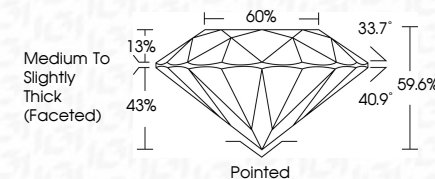
www.igi.org

LABORATORY GROWN DIAMOND REPORT

| | |
|-------------------------|-----------------------------|
| April 29, 2024 | |
| IGI Report Number | LG631457431 |
| Description | LABORATORY GROWN DIAMOND |
| Shape and Cutting Style | ROUND BRILLIANT |
| Measurements | 9.47 - 9.54 X 5.67 MM |

GRADING RESULTS

| | |
|---------------|-------------|
| Carat Weight | 3.14 CARATS |
| Color Grade | H |
| Clarity Grade | VVS 2 |
| Cut Grade | IDEAL |



ADDITIONAL GRADING INFORMATION

| | |
|----------------|---|
| Polish | EXCELLENT |
| Symmetry | EXCELLENT |
| Fluorescence | NONE |
| Inscription(s) |  LG631457431 |

Comments: This Laboratory Grown Diamond was created by Chemical Vapor Deposition (CVD) growth process and may include post-growth treatment.
Type IIa



IG

| | | | | |
|----------------------------|-----------------|--------------------|-------------------|--------------------------------------|
| April 29, 2024 | 3.14 CARATS | VVS 2 | Pointed | Comments: |
| GI REPORT NO. LG53 1457481 | Color Weight | IDEAL | EXCELLENT | Created by Chemical Vapor Deposition |
| ROUND BRILLIANT | Color Grade | 59.6% | EXCELLENT | (CVD) growth process and may include |
| | Clarity Grade | 60% | NONE | post-growth treatment. |
| | Cut Grade | Medium to slightly | 1451 LG53 1457481 | Type IIA |
| | Depth | Thick (faced) | | |
| | Table | | | |
| | Girdle | | | |
| | Culet | | | |
| | Polish | | | |
| | Symmetry | | | |
| | Fluorescence | | | |
| | Inscriptions(s) | | | |