



ELECTRONIC COPY

LABORATORY GROWN DIAMOND REPORT

| | |
|-------------------------|-----------------------------|
| April 26, 2024 | |
| IGI Report Number | LG631472232 |
| Description | LABORATORY GROWN DIAMOND |
| Shape and Cutting Style | ROUND BRILLIANT |
| Measurements | 9.03 - 9.14 X 5.77 MM |

GRADING RESULTS

| | |
|---------------|-------------|
| Carat Weight | 2.98 CARATS |
| Color Grade | E |
| Clarity Grade | VS 1 |
| Cut Grade | EXCELLENT |

ADDITIONAL GRADING INFORMATION

| | |
|----------------|---|
| Polish | EXCELLENT |
| Symmetry | EXCELLENT |
| Fluorescence | NONE |
| Inscription(s) |  LG631472232 |

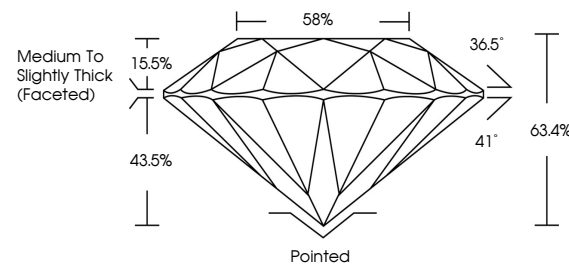
Comments: This Laboratory Grown Diamond was created by Chemical Vapor Deposition (CVD) growth process and may include post-growth treatment.
Type IIa

LABORATORY GROWN DIAMOND REPORT

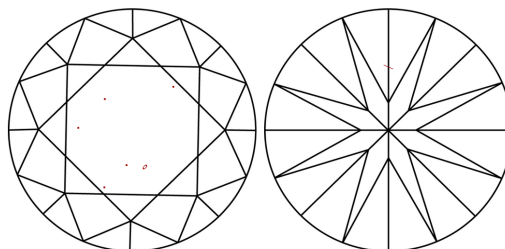
LG631472232

Report verification at igi.org

PROPORTIONS



CLARITY CHARACTERISTICS



KEY TO SYMBOLS

Red symbols indicate internal characteristics.
Green symbols indicate external characteristics.

LABORATORY GROWN
DIAMOND REPORT

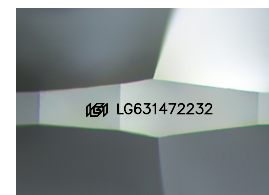
GRADING SCALES

CLARITY

| IF | VVS ¹⁻² | VS ¹⁻² | SI ¹⁻² | I ¹⁻³ |
|---------------------|-----------------------------|------------------------|-------------------|------------------|
| Internally Flawless | Very Very Slightly Included | Very Slightly Included | Slightly Included | Included |

COLOR

D E F G H I J Faint Very Light Light



Sample Image Used



© IGI 2020, International Gemological Institute

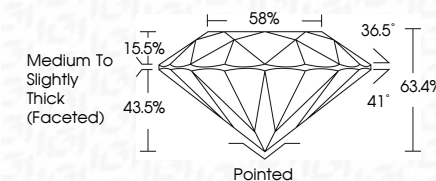
FD - 10 20

LABORATORY GROWN DIAMOND REPORT

| | |
|-------------------------|-----------------------------|
| April 26, 2024 | |
| IGI Report Number | LG631472232 |
| Description | LABORATORY GROWN DIAMOND |
| Shape and Cutting Style | ROUND BRILLIANT |
| Measurements | 9.03 - 9.14 X 5.77 MM |

GRADING RESULTS

| | |
|---------------|-------------|
| Carat Weight | 2.98 CARATS |
| Color Grade | E |
| Clarity Grade | VS 1 |
| Cut Grade | EXCELLENT |



ADDITIONAL GRADING INFORMATION

| | |
|----------------|------------------|
| Polish | EXCELLENT |
| Symmetry | EXCELLENT |
| Fluorescence | NONE |
| Inscription(s) | (15) LG631472232 |

Comments: This Laboratory Grown Diamond was created by Chemical Vapor Deposition (CVD) growth process and may include post-growth treatment.
Type IIa



| | | | | | | |
|------------------------|---------------|-----------|---|----------------|----------------------|---|
| April 24, 2024 | 2.98 CARATS | Vs 1 | <p>Medium to Slightly Thick (Faceted)</p> | Ported | <p>169 L56147232</p> | <p>Comments: Created by Crown Diamond via email as requested by Crown Diamond (CVD) growth process and may include post-growth treatment. Type IIa</p> |
| GI Report No.IG3347232 | Color Weight | EXCELLENT | | EXCELLENT | | |
| ROUND BRILLIANT | Color Grade | 63.4% | | EXCELLENT | | |
| 0.03 - 0.14 X 5.77 MM | Clarity Grade | 58% | | EXCELLENT | | |
| | Cut Grade | | | EXCELLENT | | |
| | Depth | | | Polish | | |
| | Table | | | Symmetry | | |
| | Girdle | | | Fluorescence | | |
| | | | | Inscription(s) | | |