



**ELECTRONIC COPY**

## LABORATORY GROWN DIAMOND REPORT

April 23, 2024	
IGI Report Number	LG631472691
Description	LABORATORY GROWN DIAMOND
Shape and Cutting Style	ROUND BRILLIANT
Measurements	8.31 - 8.36 X 5.02 MM
<b>GRADING RESULTS</b>	
Carat Weight	2.12 CARATS
Color Grade	D
Clarity Grade	VVS 2
Cut Grade	IDEAL

### ADDITIONAL GRADING INFORMATION

Polish	EXCELLENT
Symmetry	EXCELLENT
Fluorescence	NONE
Inscription(s)	 LG631472691

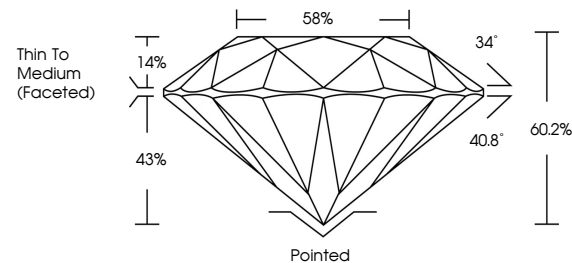
Comments: HEARTS & ARROWS  
This Laboratory Grown Diamond was created by  
Chemical Vapor Deposition (CVD) growth process and  
may include post-growth treatment.  
Type IIa



LG631472691

Report verification at [igi.org](http://igi.org)

## PROPORTIONS



**www.igi.org**

LABORATORY GROWN  
DIAMOND REPORT

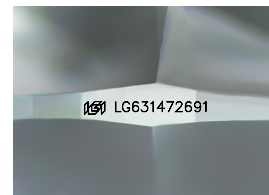
## GRADING SCALES

## CLARITY

IF	VVS <sup>1-2</sup>	VS <sup>1-2</sup>	SI <sup>1-2</sup>	I <sup>1-3</sup>
Internally Flawless	Very Very Slightly Included	Very Slightly Included	Slightly Included	Included

**COLOR**

D E F G H I J Faint Very Light Light



Sample Image Used



© IGI 2020, International Gemological Institute

FD - 10 20

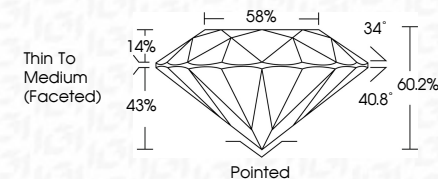
LABORATORY GROWN DIAMOND REPORT

April 23, 2024	
IGI Report Number	LG631472691
Description	LABORATORY GROWN

Shape and Cutting Style	ROUND BRILLIANT
Measurements	8.31 - 8.36 X 5.02 MM

## GRADING RESULTS

Carat Weight	2.12 CARATS
Color Grade	D
Clarity Grade	VVS 2
Cut Grade	IDEAL



### ADDITIONAL GRADING INFORMATION

Polish	EXCELLENT
Symmetry	EXCELLENT
Fluorescence	NONE
Inscription(s)	 LG631472691

Comments: HEARTS & ARROWS  
This Laboratory Grown Diamond was created by  
Chemical Vapor Deposition (CVD) growth process and  
may include post-growth treatment.  
Type IIa



April 23, 2024  
IGI Report No LG631472691  
ROUND BRILLIANT

Color	Color Grade	Clarity	Clarity Grade	Cut	Cut Grade	Depth	Table	Girdle	Proportions	Finish	Fluorescence	Comments
2.12 CARATS	D	VVS 2	IDEAL	60.2%	58%	Thin To Medium	(face-up)	Pointed	EXCELLENT	EXCELLENT	NONE	See LCA51772501

**Comments:**  
HEARTS & ARROWS  
This Laboratory Grown Diamond was  
created by Chemical Vapor Deposition  
(CVD) growth process and may include  
post-growth treatment.