



ELECTRONIC COPY

LABORATORY GROWN DIAMOND REPORT

May 6, 2024	
IGI Report Number	LG632426030
Description	LABORATORY GROWN DIAMOND
Shape and Cutting Style	ROUND BRILLIANT
Measurements	7.00 - 7.03 X 4.36 MM

GRADING RESULTS

Carat Weight	1.34 CARAT
Color Grade	E
Clarity Grade	VVS 2
Cut Grade	IDEAL

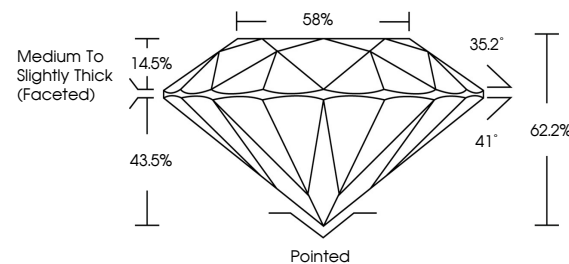
ADDITIONAL GRADING INFORMATION

Polish	EXCELLENT
Symmetry	EXCELLENT
Fluorescence	NONE
Inscription(s)	 LG632426030

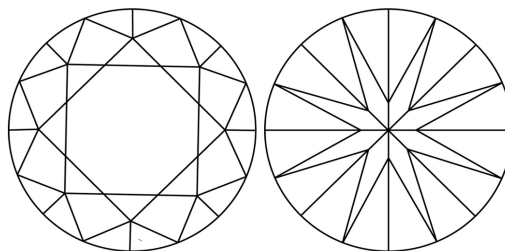
Comments: This Laboratory Grown Diamond was created by Chemical Vapor Deposition (CVD) growth process and may include post-growth treatment.
Type IIa

LG632426030
Report verification at igi.org

PROPORTIONS

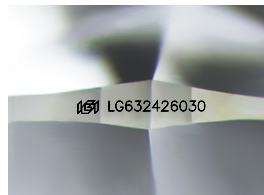


CLARITY CHARACTERISTICS



KEY TO SYMBOLS

Red symbols indicate internal characteristics.
Green symbols indicate external characteristics.



Sample Image Used

COLOR

D E F G H I J Faint Very Light Light

CLARITY

IF	VVS ^{1,2}	VS ^{1,2}	SI ^{1,2}	I ^{1,3}
Internally Flawless	Very Very Slightly Included	Very Slightly Included	Slightly Included	Included



© IGI 2020, International Gemological Institute

FD - 10 20

www.igi.org

DIAMOND REPORT



May 6, 2024

IGI Report Number **LG632426030**

Description	LABORATORY GROWN DIAMOND
-------------	--------------------------

Shape and Cutting Style **ROUND BRILLIANT**

Measurements 7.00 - 7.03 X 4.36 MM

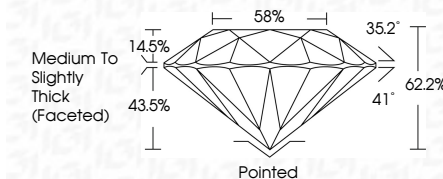
GRADING RESULTS

Carat Weight **1.34 CARAT**

Color Grade	E
-------------	---

Clarity Grade **VVS 2**

Cut Grade **IDEAL**



ADDITIONAL GRADING INFORMATION

Polish **EXCELLENCE**Symmetry **EXCELLENCE**

Fluorescence NONI

Inscription(s) LG632426030

Comments: This Laboratory Grown Diamond was created by Chemical Vapor Deposition (CVD) growth process and may include post-growth treatment.
Type IIa



	May 4, 2024	
	GJ Report No LGS62926030	
	ROUND BRILLIANT	
	0.00 - 7.08 X 4.36 MM	
	Carat Weight	1.34 CARAT E
	Color Grade	VVS 2
	Clarity Grade	IDEAŁ
	Cut Grade	62.2%
	Depth	59%
	Table	Medium to Slightly Thick Faceted)
	Girdle	Poited EXCELLENT EXCELLENT NONE
	Symmetry	#GJ LGS62926030
	Fluorescence	
	Inscriptions(s)	
	Cuelet	
	Polish	
	Symmetry	
	Comments:	
	Treated by Chemical Vapor Deposition	
	(CVD) growth process and may include post-growth treatment.	
	Type IIA	